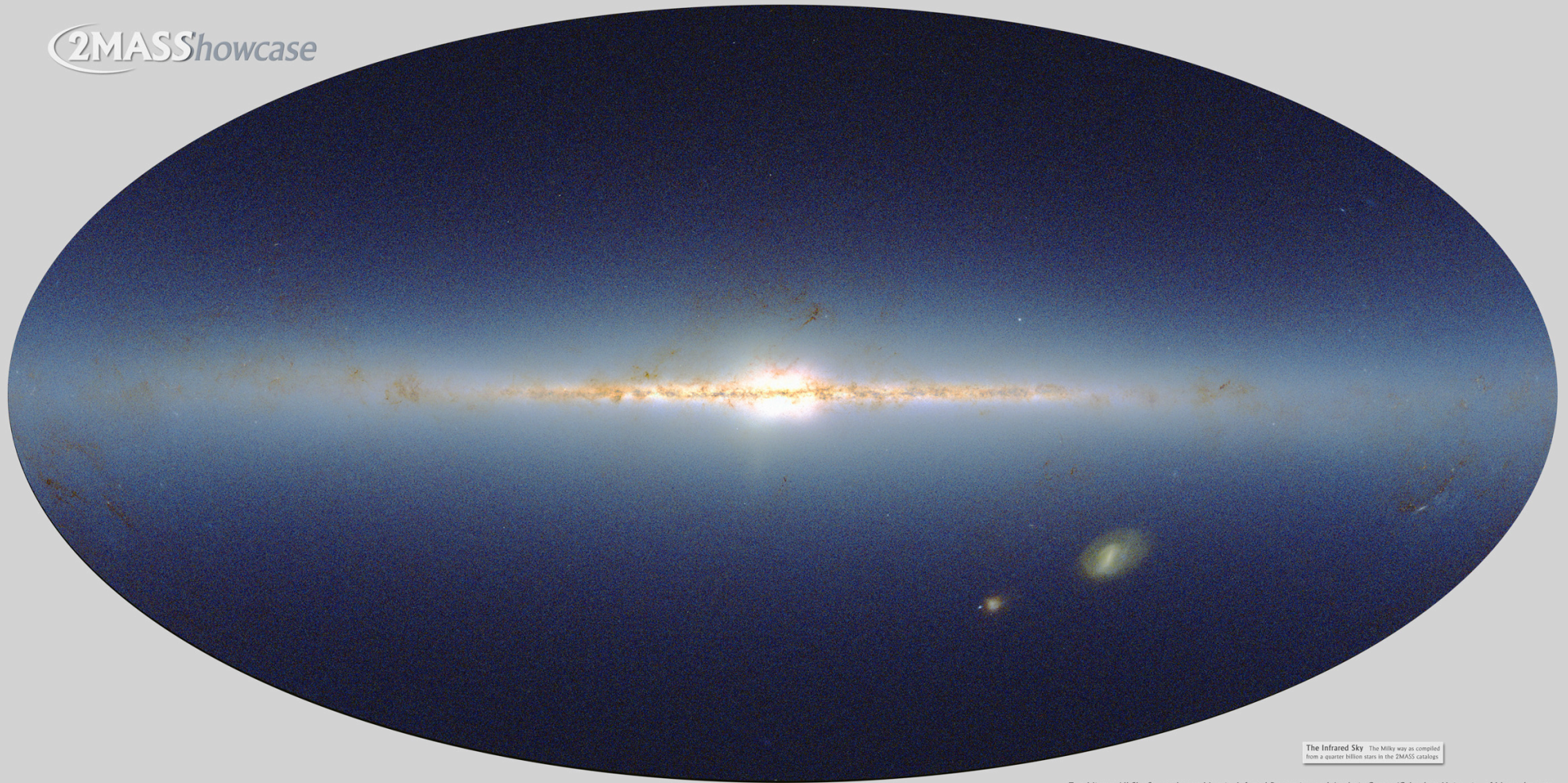


# Our Galaxy: The Milky Way

2MASS Showcase



The Infrared Sky The Milky way as compiled from a quarter billion stars in the 2MASS catalogs

Two Micron All Sky Survey Image Mosaic: Infrared Processing and Analysis Center/Caltech & University of Massachusetts

Infrared observations let us see through (most of) the dust.



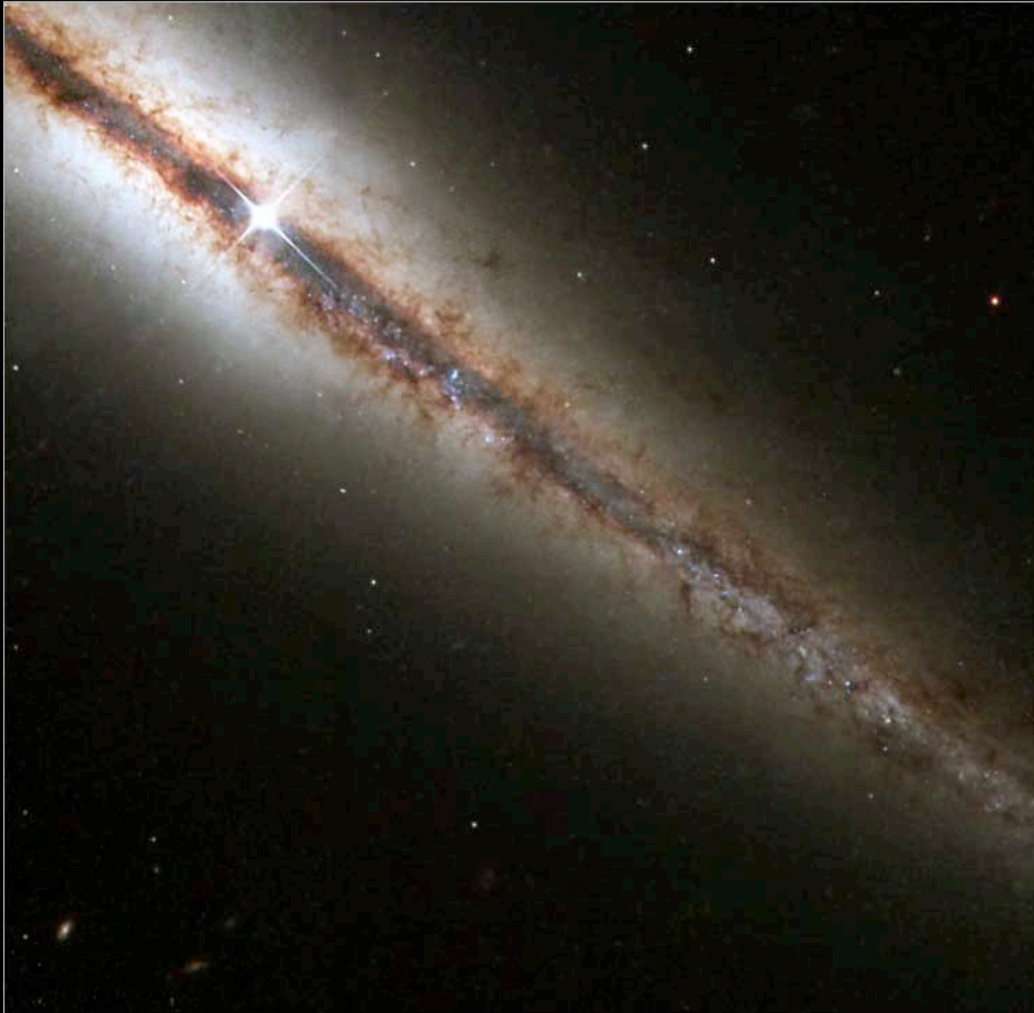
# Andromeda: The nearest spiral





# Edge-on and Face-on Spirals

Edge-On Galaxy NGC 4013



Whirlpool Galaxy • M51



Elliptical Galaxy NGC 1132





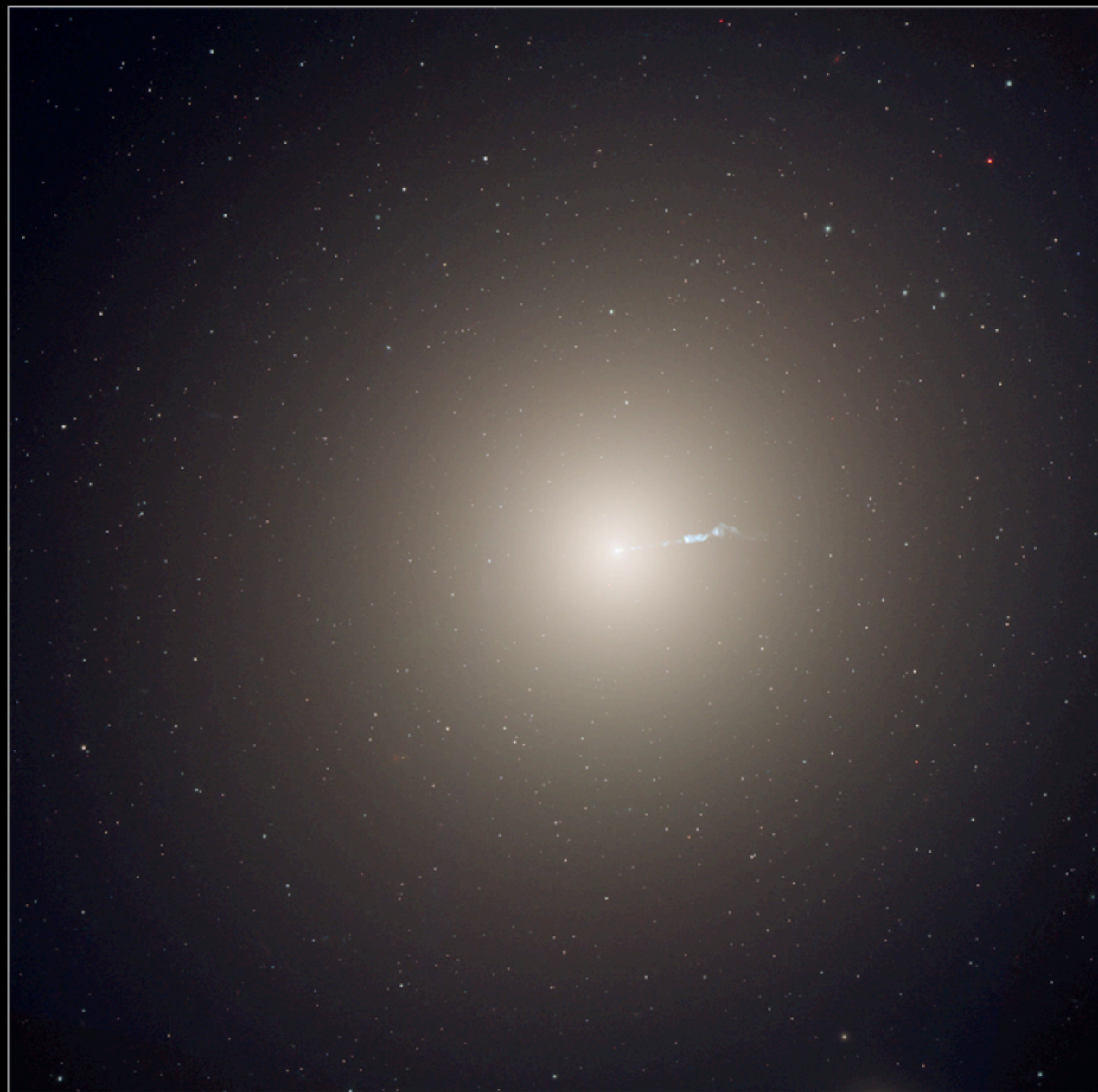


M87

Giant Elliptical in Virgo Cluster  
 $\sim 10^4$  globular clusters



Elliptical Galaxy M87



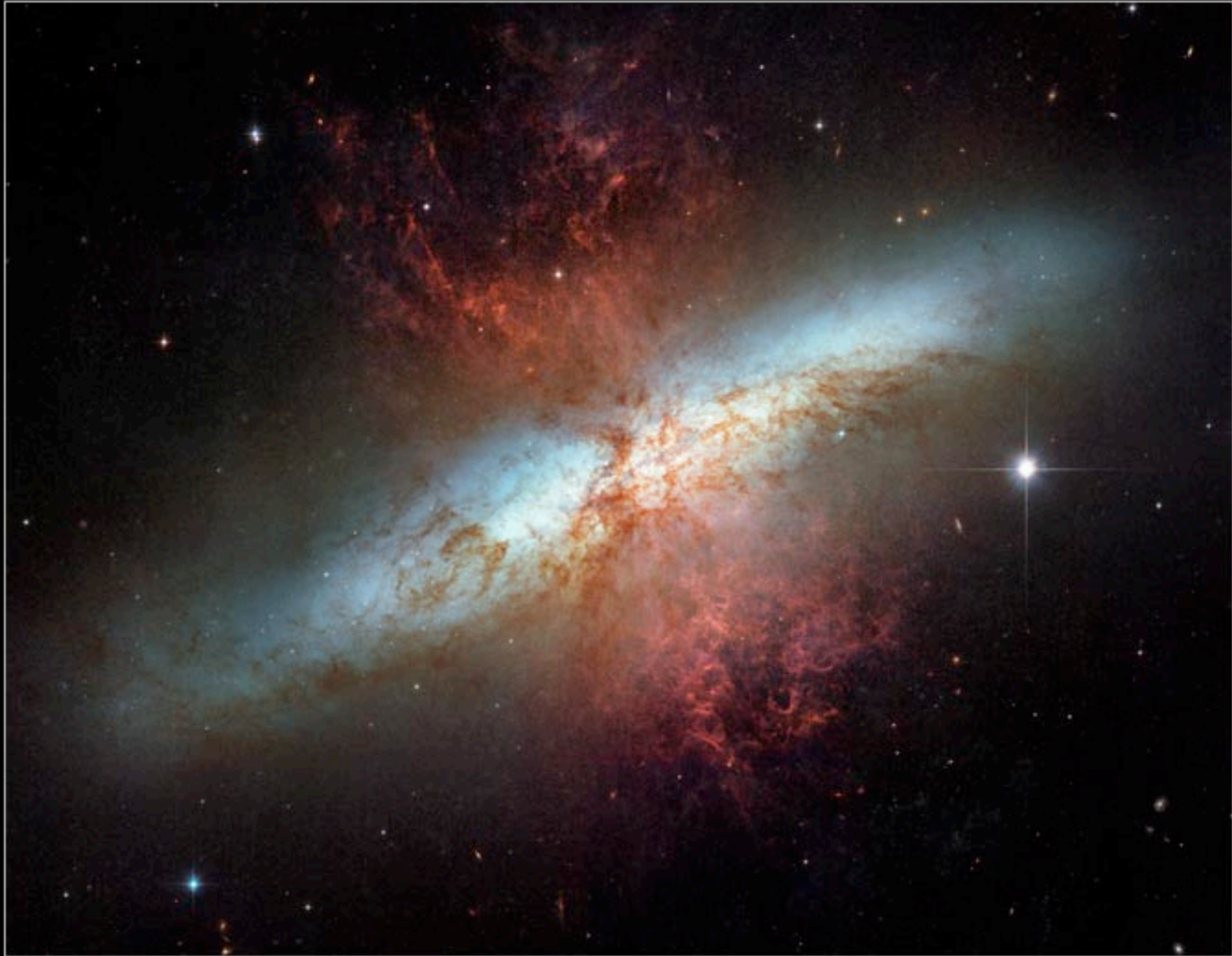


Active Galaxy NGC 1275



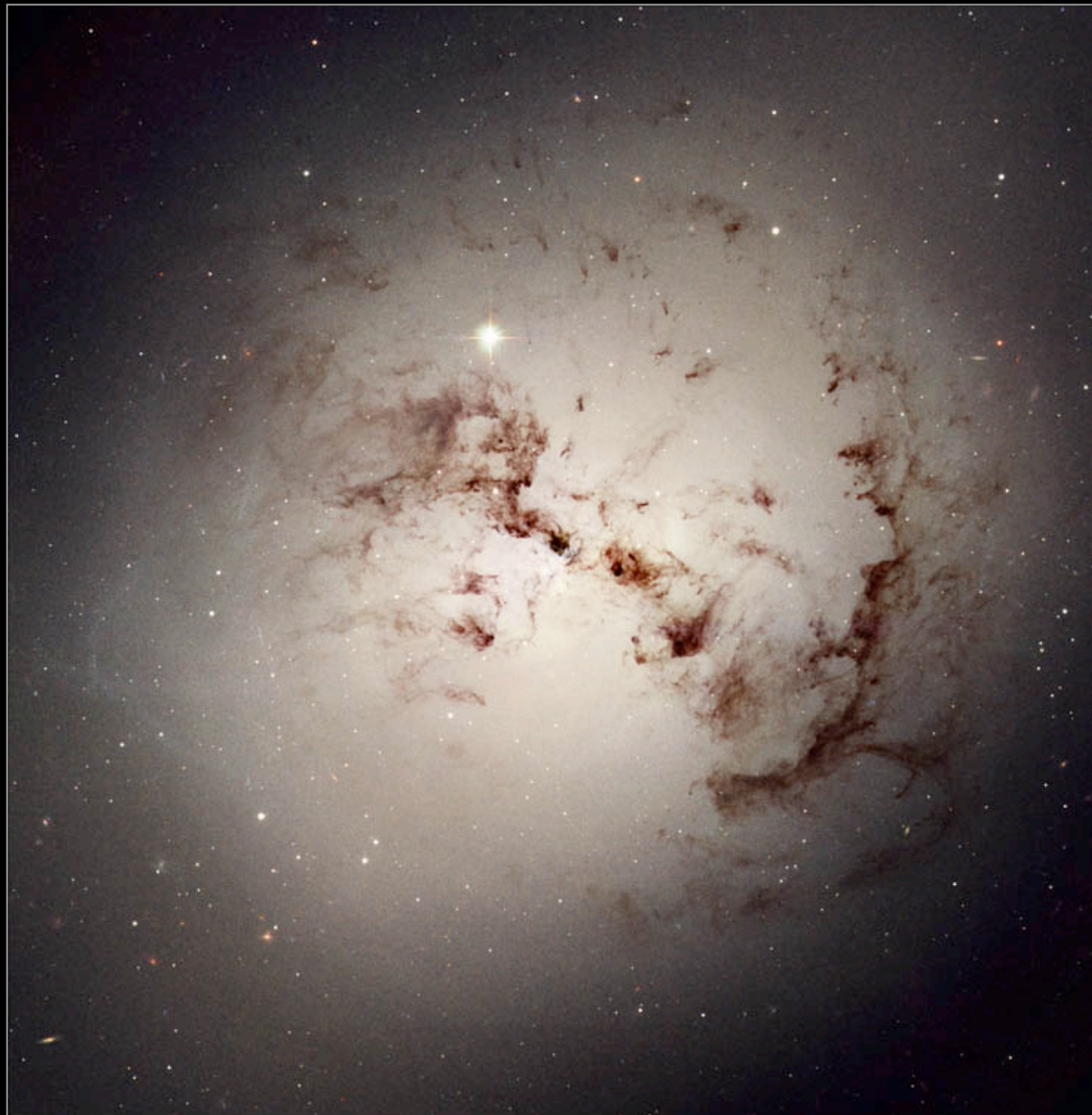


Active Galaxy M82





Elliptical Galaxy NGC 1316





Edge-On Lenticular Galaxy NGC 5866



Hubble  
Heritage



Sombrero Galaxy • M104



Spiral Galaxy M64





# Spiral Galaxy M81



Hubble  
Heritage

Spiral Galaxy NGC 3370





Whirlpool Galaxy · M51



Hubble  
Heritage

NASA, ESA, S. Beckwith (STScI), and The Hubble Heritage Team (STScI/AURA) · Hubble Space Telescope ACS · STScI-PRC05-12a

Spiral Galaxy NGC 1309

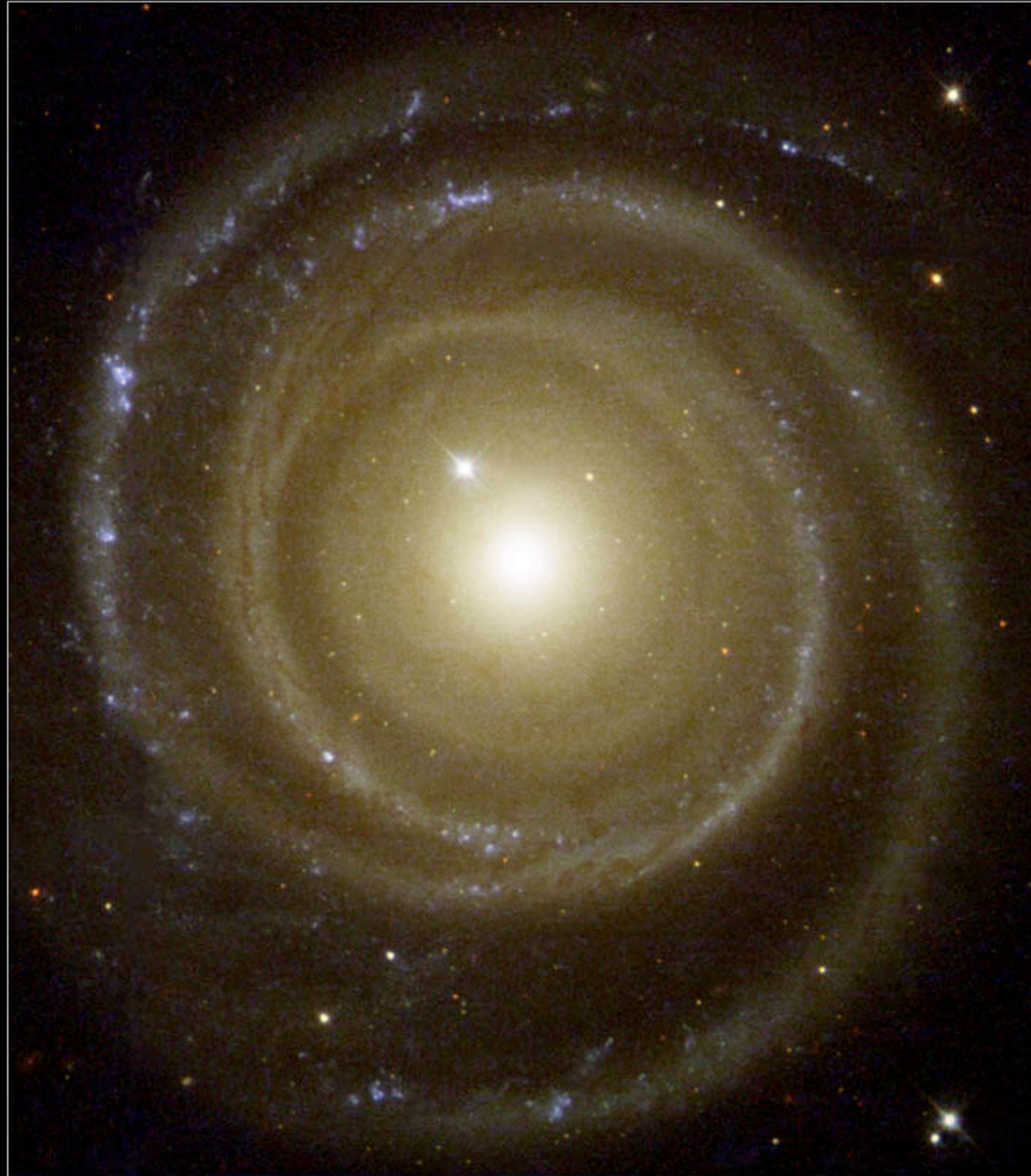




Spiral Galaxy M74

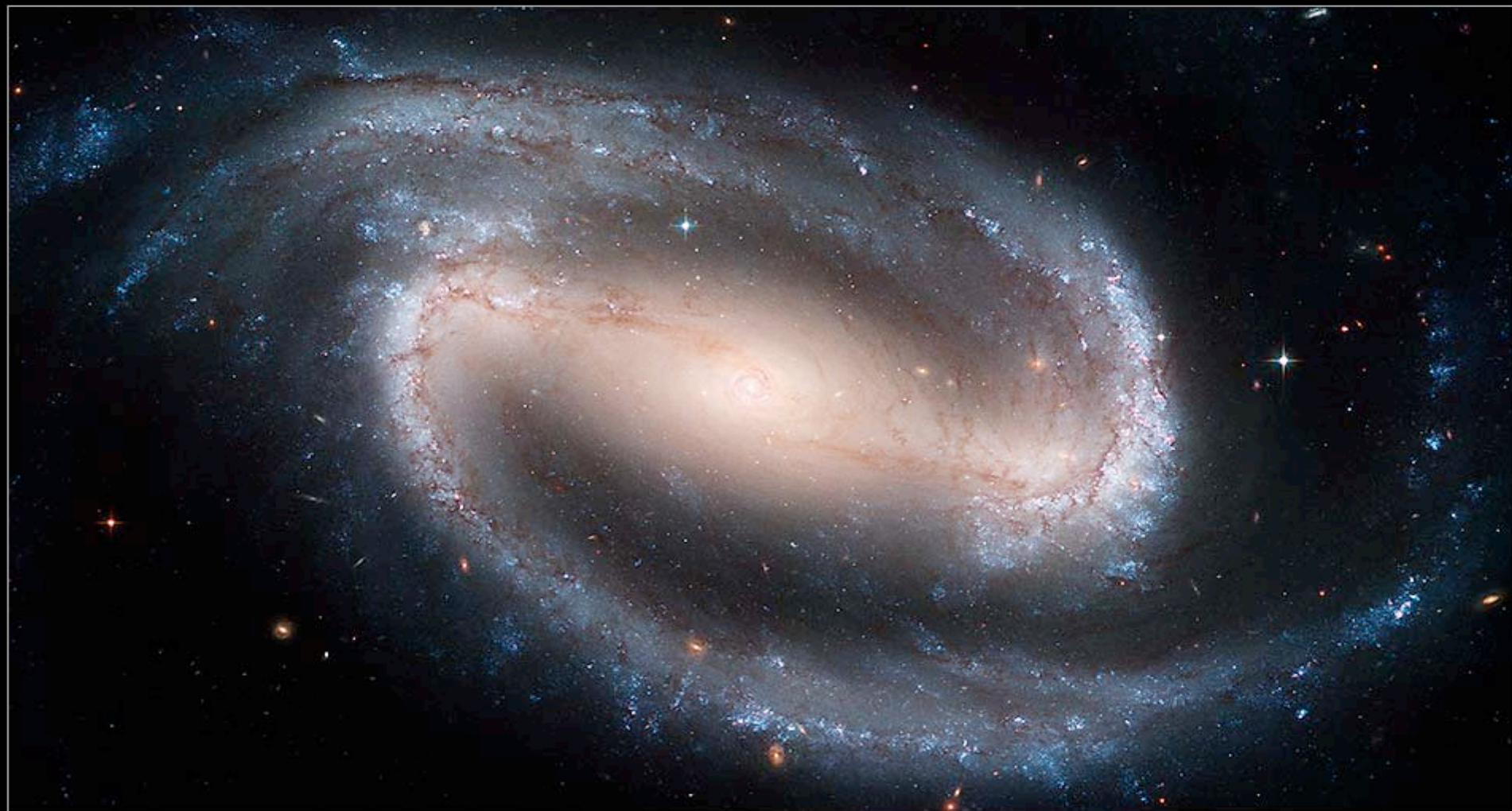


Spiral Galaxy NGC 4622





Barred Spiral Galaxy NGC 1300



Hubble  
Heritage

# Barred Spiral Galaxy NGC 1672

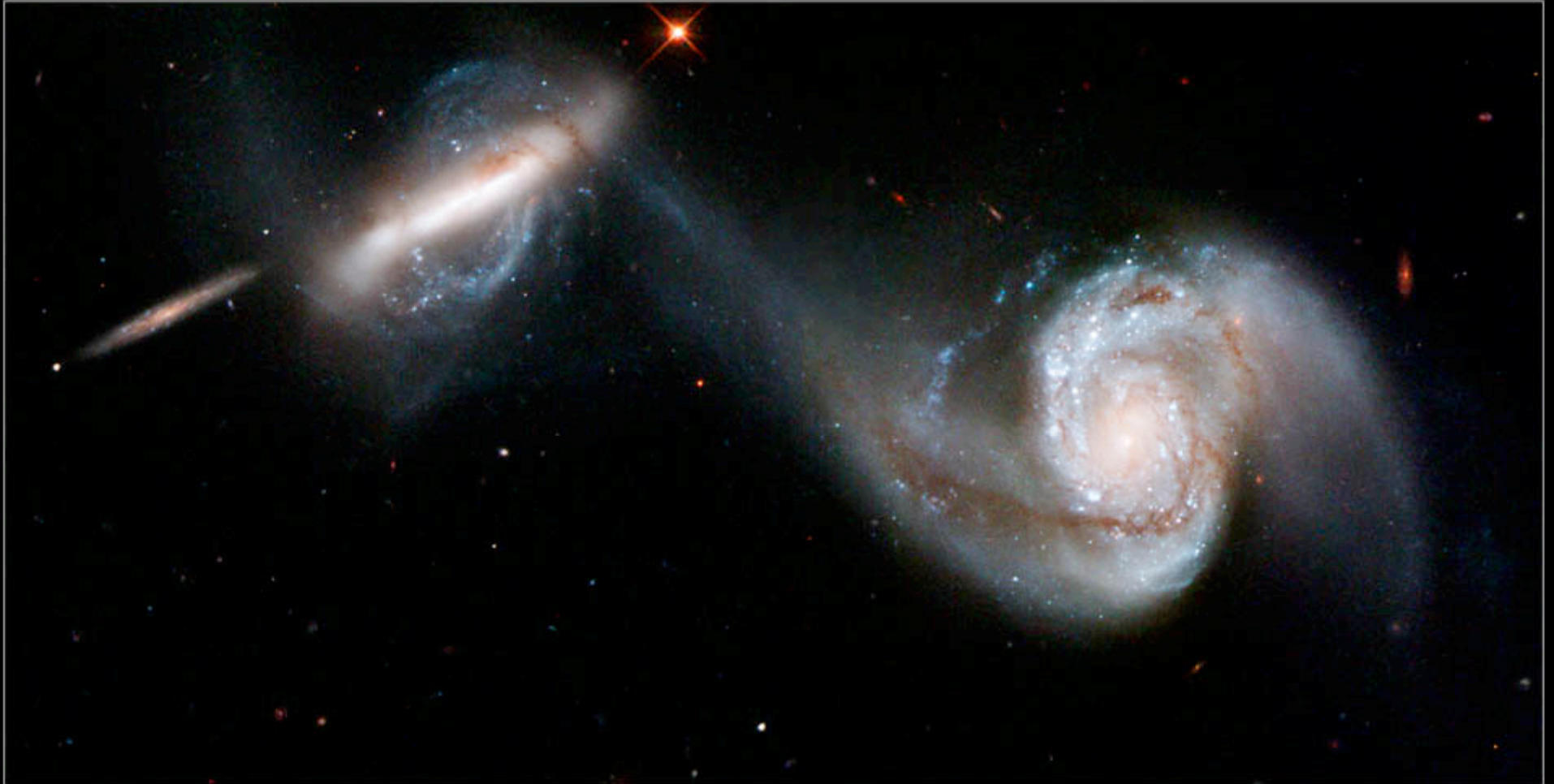


Hubble  
Heritage



# Colliding Galaxies

Interacting Galaxies • Arp 87



Hubble  
Heritage

Galaxies NGC 2207 and IC 2163

# Colliding Galaxies



Hubble  
Heritage



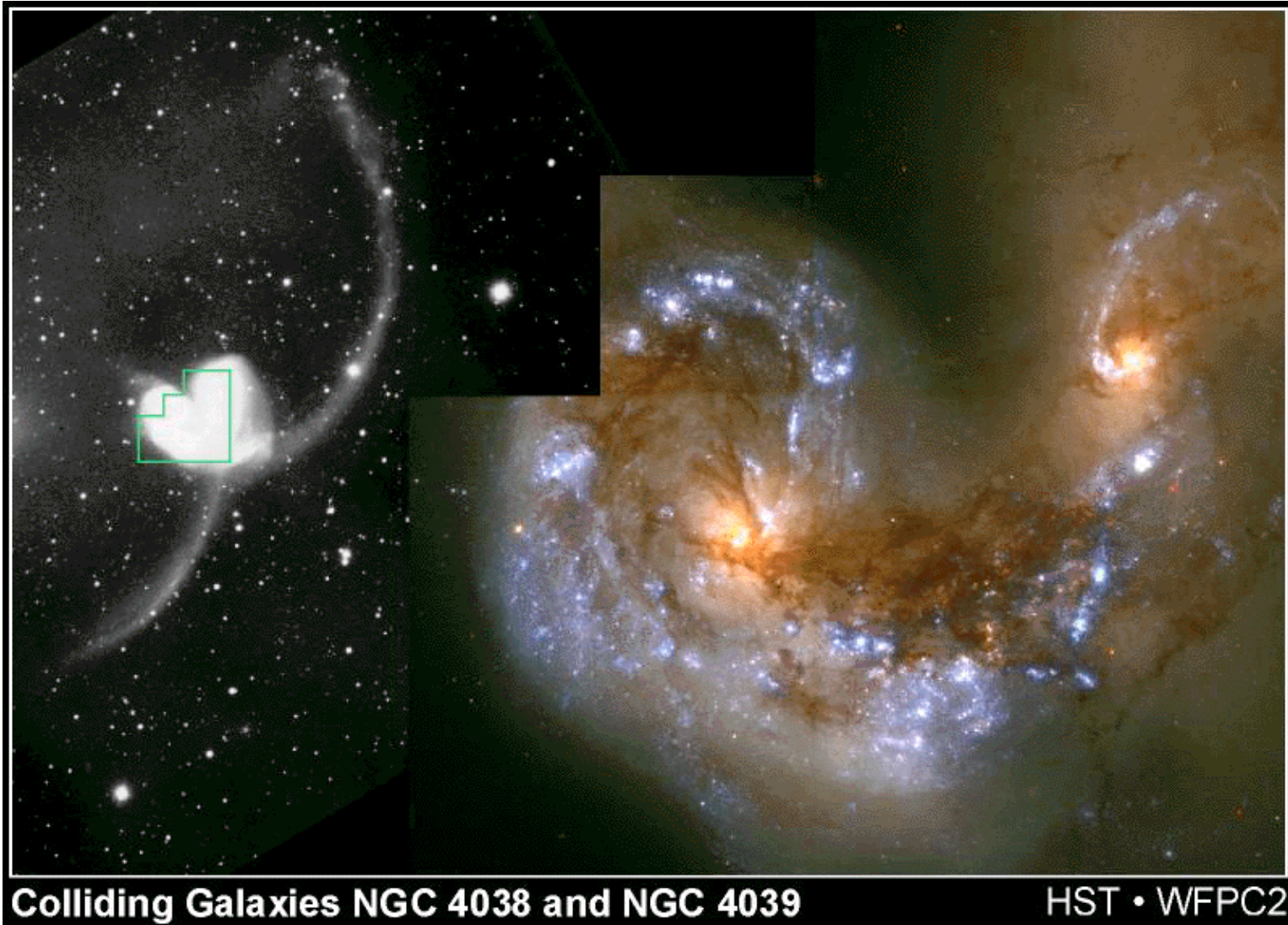
NGC 6050



Arp 148



# The Antennae Galaxy: mid-merger



Rapid burst of new star formation triggered by the collision.



NGC 4038-4039 • Antennae Galaxies



Hubble  
Heritage

Dwarf Irregular Galaxy NGC 1427A



Hubble  
Heritage



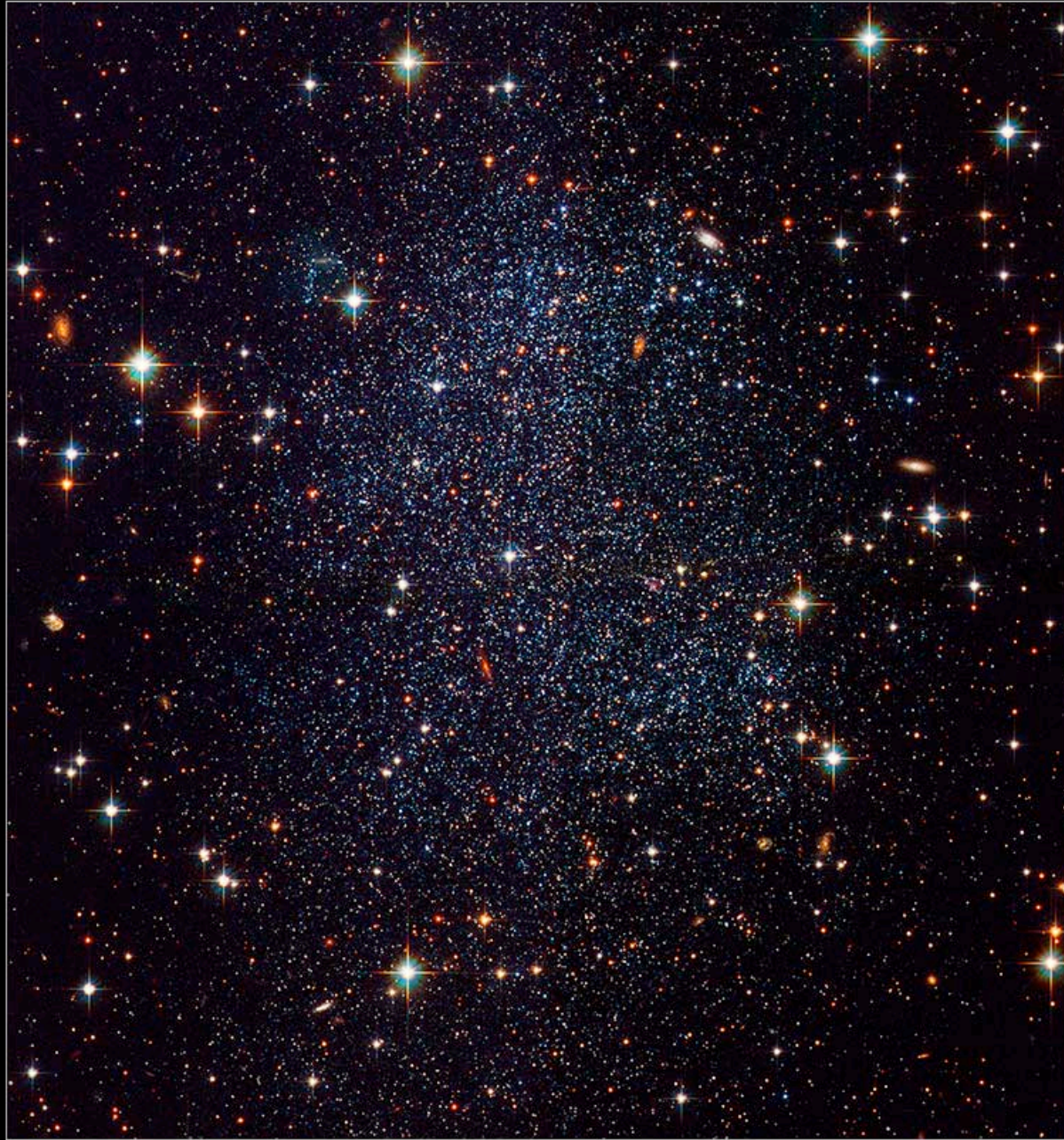
# Dwarf Galaxy NGC 4449



Hubble  
Heritage



# Sagittarius Dwarf Irregular Galaxy





# Coma Cluster of Galaxies



Elliptical Galaxy ESO 325-G004 in the Abell Cluster S0740

