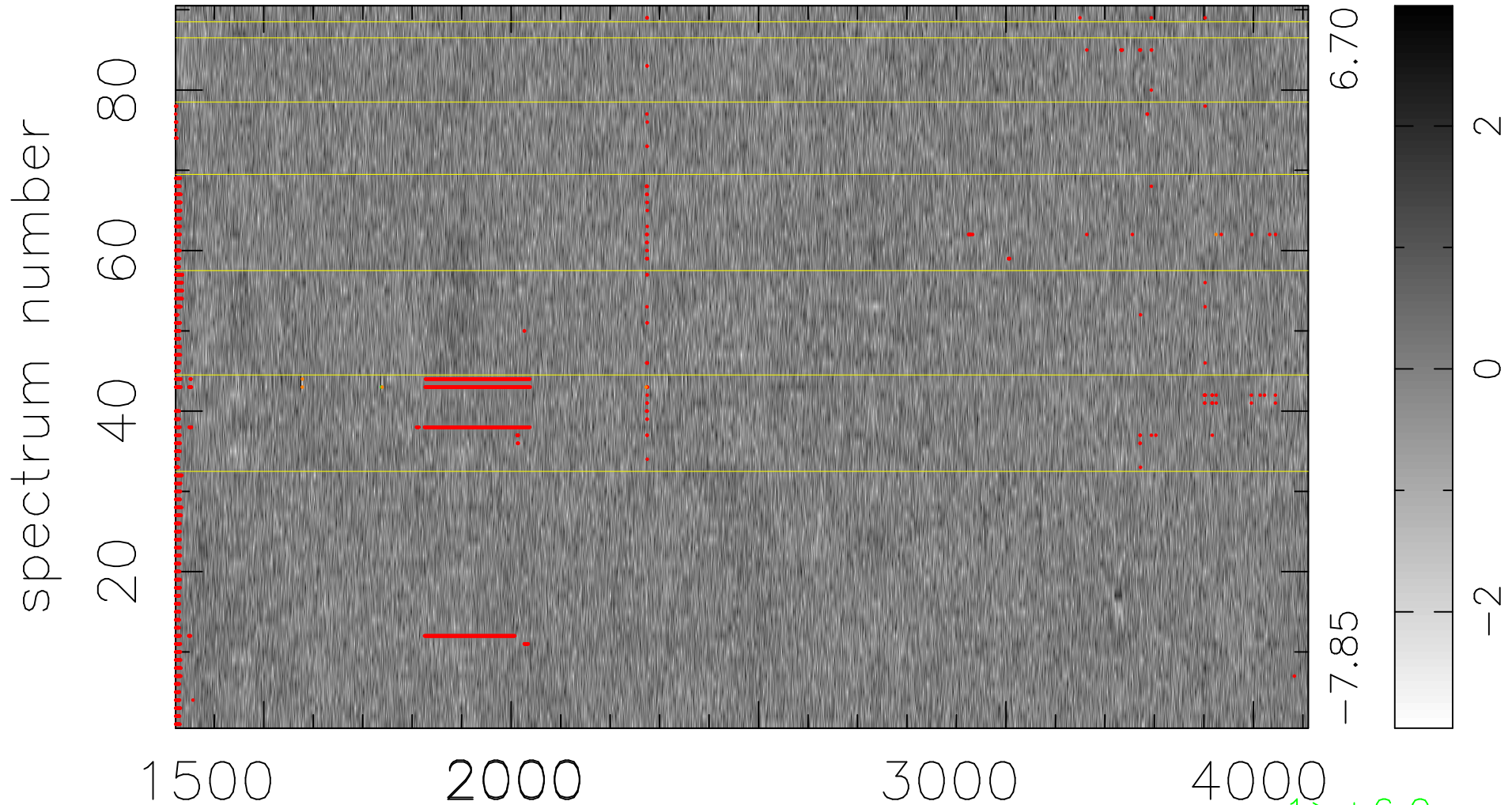


$$\chi(\lambda, t) = ( \text{Data} - \text{Model AC}_5\text{F} ) / \sigma \chi$$

$$\chi^2 / (412110 - 5060) = 0.943 \Rightarrow 1.007$$

4579x90



bad:3132=0.76%  $\lambda$  (Å)  $z = 1.46386$

1 > +6.0 $\sigma$

5 < -6.0 $\sigma$