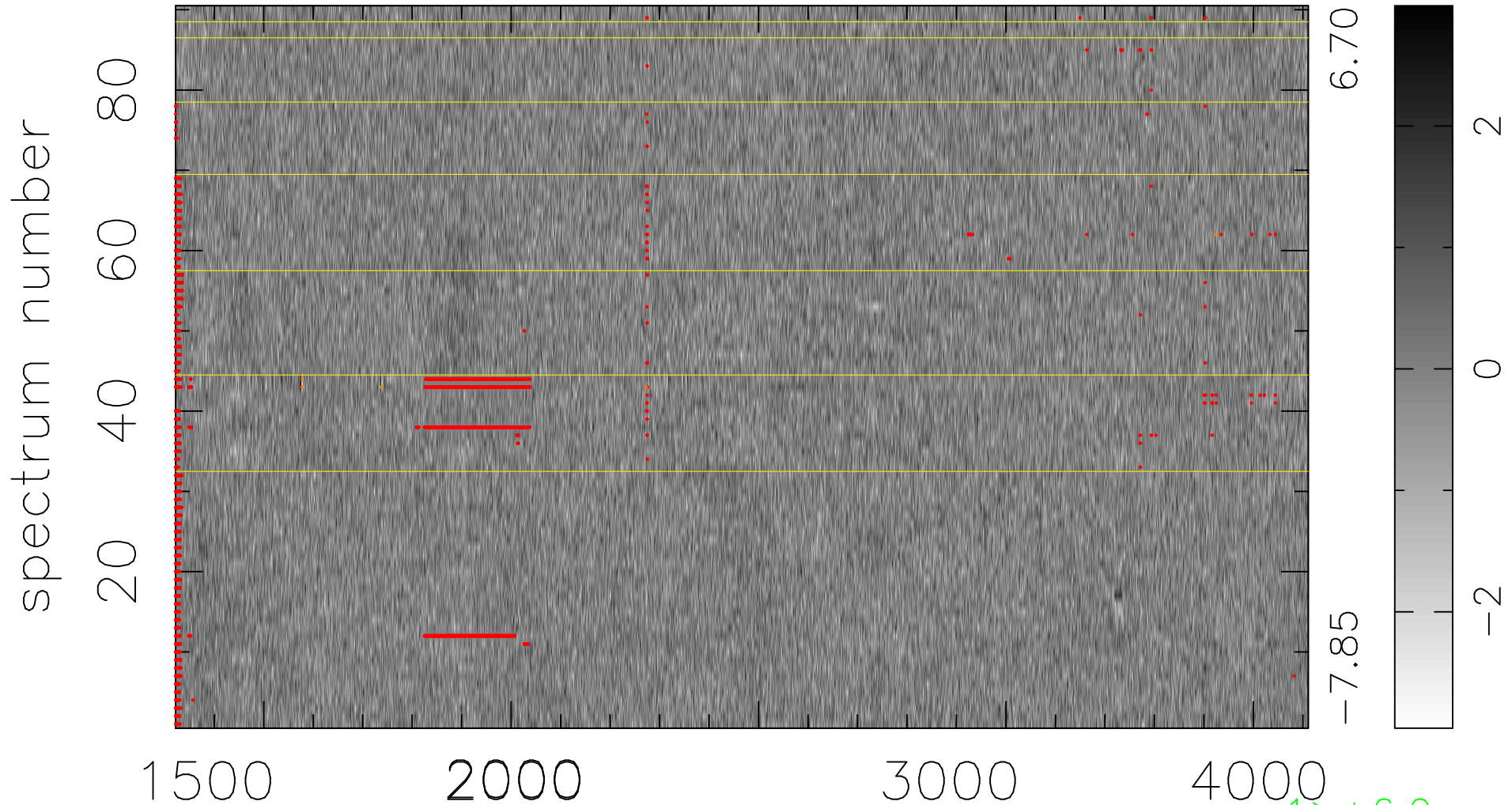


$$\chi(\lambda,t) = (\text{Data} - \text{Model } AC_5) / \sigma \chi$$

$\chi^2 / (412110 - 4970) = 0.943 \Rightarrow 1.007$

4579x90



bad:3132=0.76% λ (Å) $z = 1.46386$

1 > +6.0σ

5 < -6.0σ