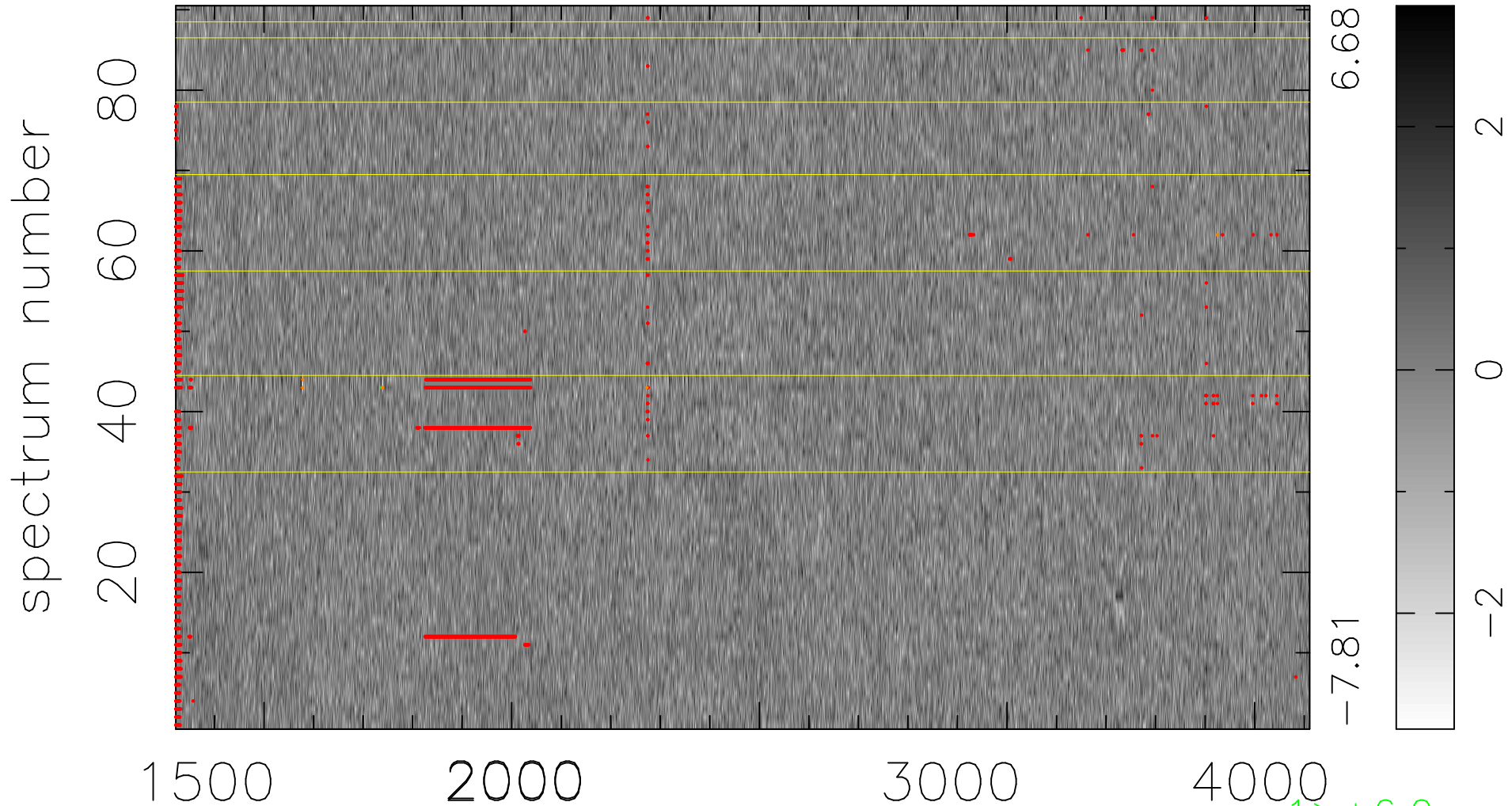


$$\chi(\lambda, t) = (\text{Data} - \text{Model } \text{AC}_5\text{B}_4\text{F}) / \sigma \chi$$

$$\chi^2 / (412110 - 5238) = 0.939 \Rightarrow 1.007$$

4579x90



bad:3132=0.76% λ (Å) $z = 1.46386$

$1 > +6.0\sigma$
 $5 < -6.0\sigma$