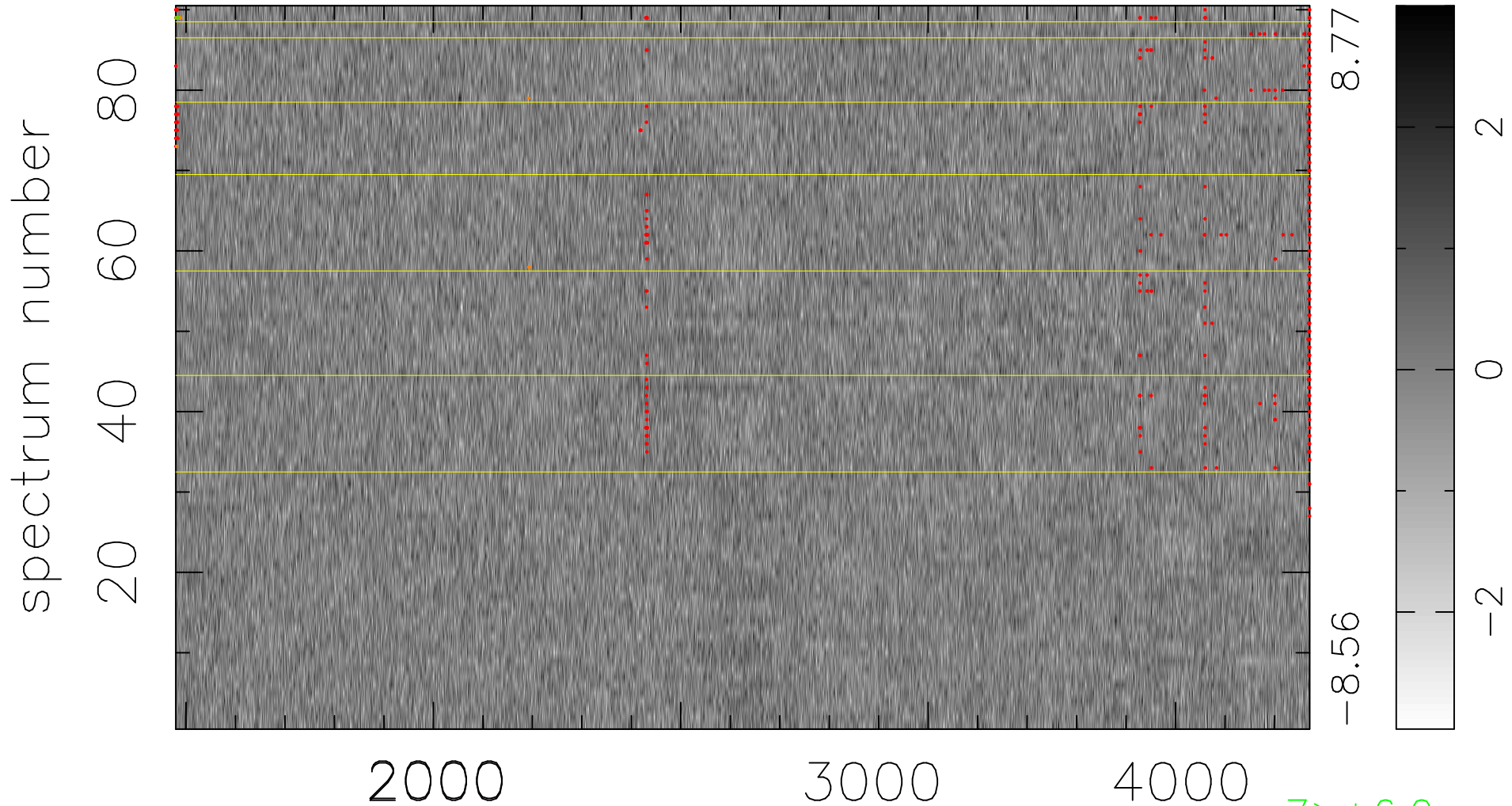


$$\chi(\lambda, t) = (\text{Data} - \text{Model } \text{AC}_5\text{B}_3\text{F}) / \sigma \chi$$

$$\chi^2 / (412560 - 5125) = 0.975 \Rightarrow 1.007$$

4584x90



-8.56

8.77

2

0

-2

7 > +6.0σ

11 < -6.0σ

bad:434=0.11%

λ (Å) z = 1.29258