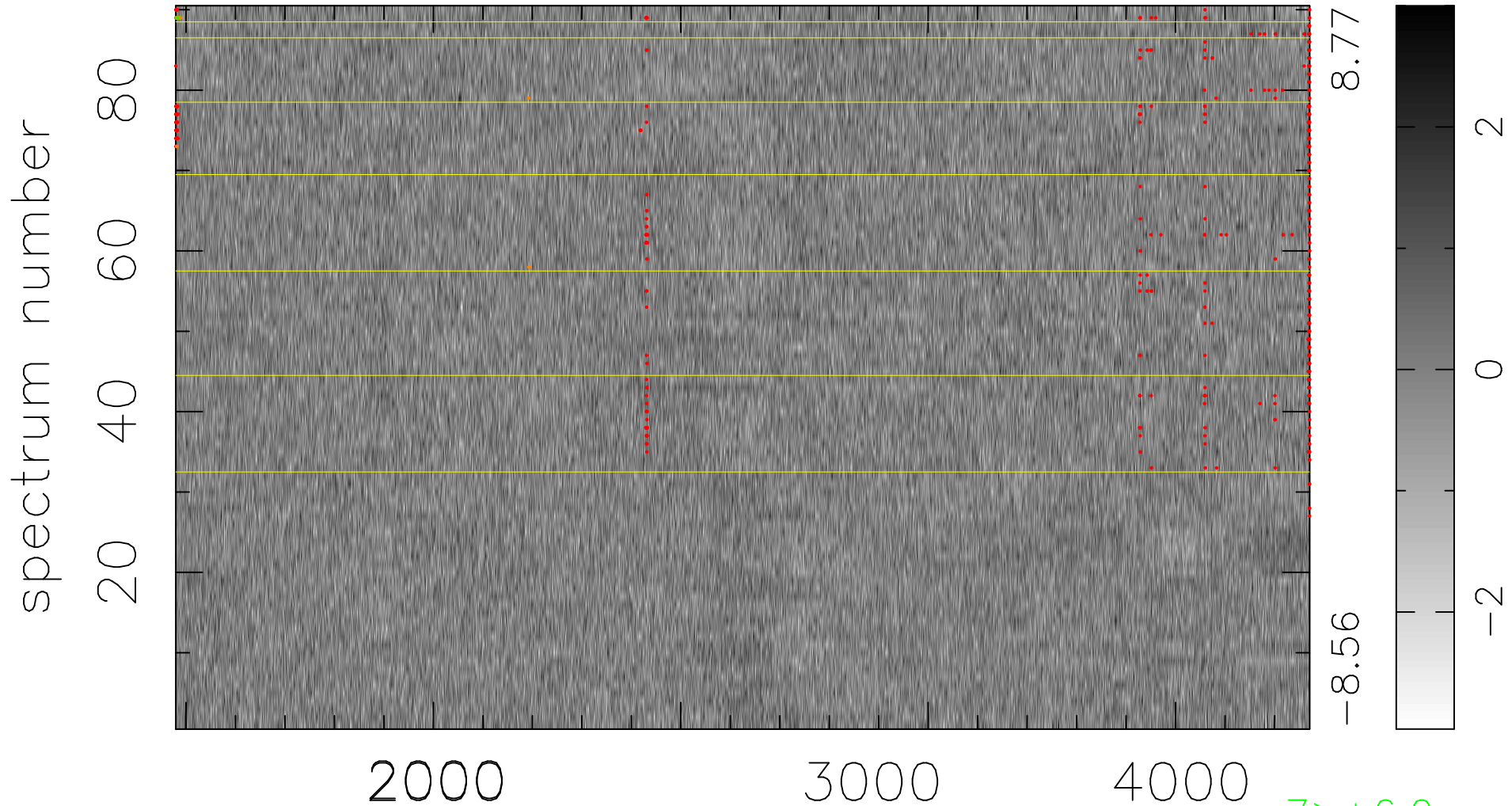


$$\chi(\lambda, t) = (\text{Data} - \text{Model } AC_5) / \sigma \chi$$

$$\chi^2 / (412560 - 4875) = 0.978 \Rightarrow 1.007$$

4584x90



8.77

-8.56

2

0

-2

7 > +6.0σ

11 < -6.0σ

bad:434=0.11%

λ (Å) z = 1.29258