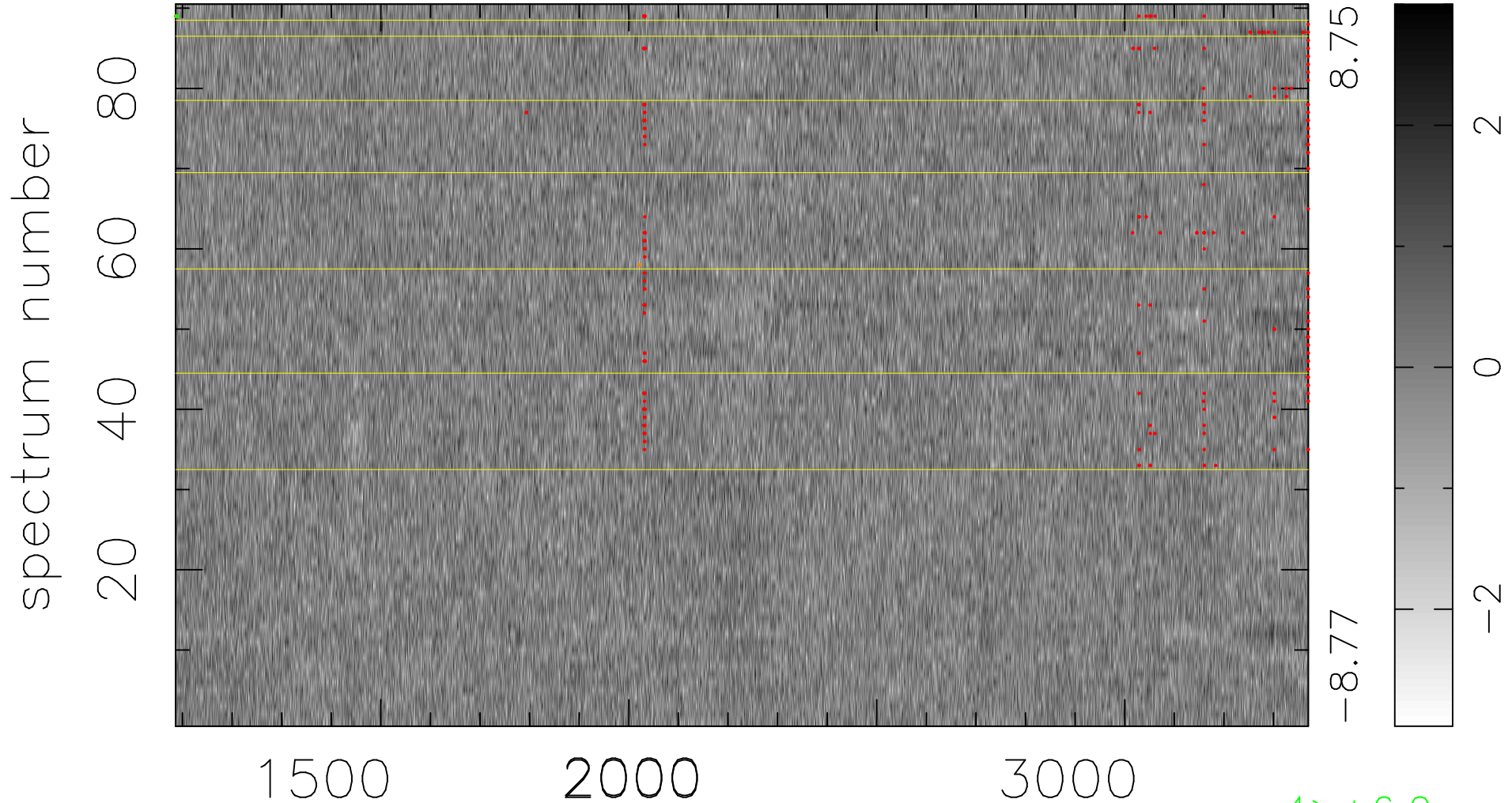


$$\chi(\lambda, t) = (\text{Data} - \text{Model AC}_5\text{F}) / \sigma \chi$$

$$\chi^2 / (411210 - 5145) = 0.964 \Rightarrow 1.007$$

4569x90



bad:230=0.056% λ (Å) $z = 1.75535$

4 > +6.0 σ

5 < -6.0 σ