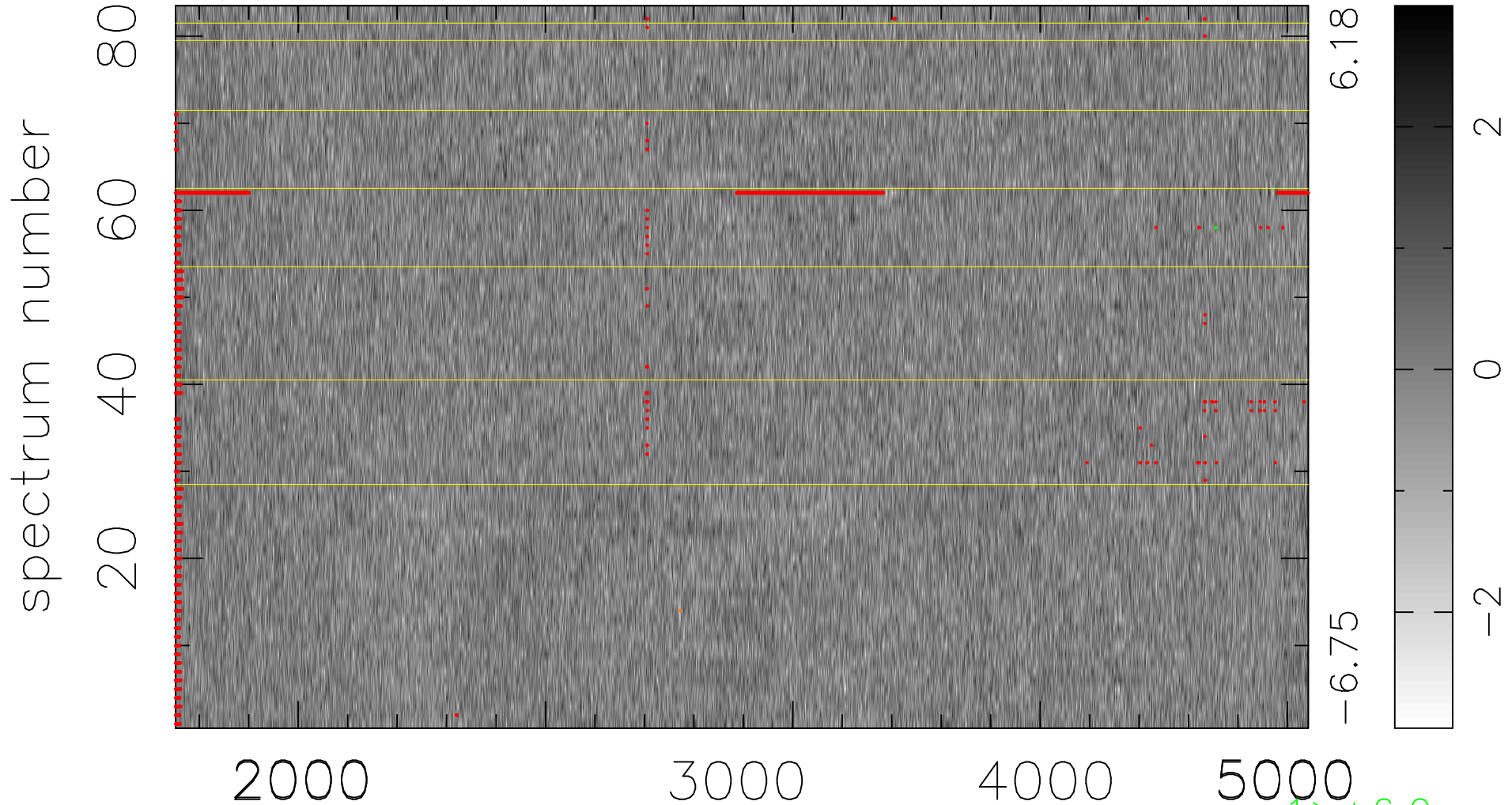


$$\chi(\lambda, t) = ( \text{Data} - \text{Model } \text{AC}_5\text{B}_4\text{F} ) / \sigma \chi$$

$$\chi^2 / (380223 - 5208) = 0.954 \Rightarrow 1.009$$

4581 × 83



bad:2320=0.61%     $\lambda$  (Å)     $z = 1.02060$

$\uparrow > +6.0\sigma$

$\downarrow < -6.0\sigma$