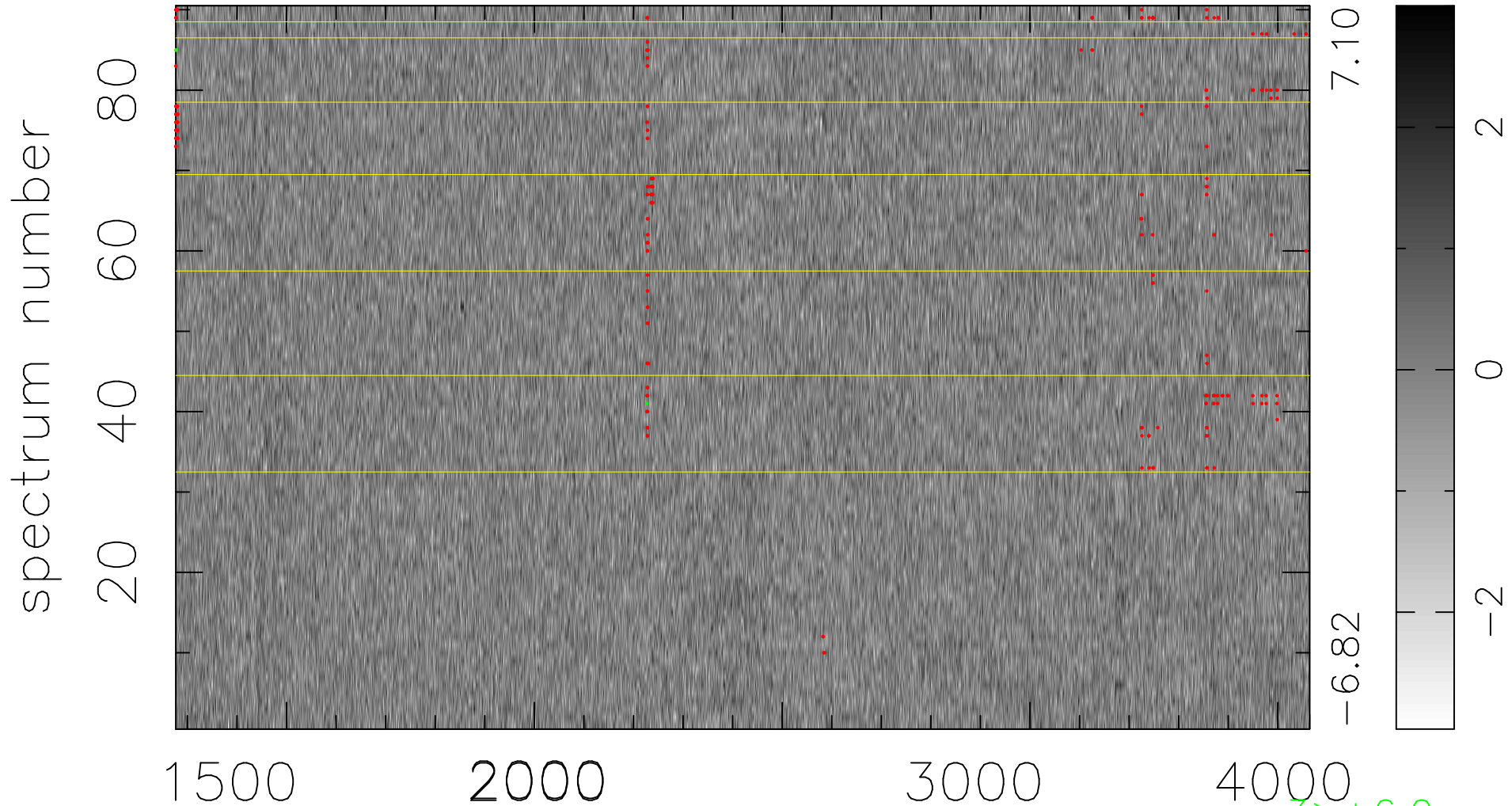


$$\chi(\lambda, t) = (\text{Data} - \text{Model } \text{AC}_5\text{B}_4\text{F}) / \sigma \chi$$

$$\chi^2 / (411840 - 5190) = 0.917 \Rightarrow 1.007$$

4576x90



bad:254=0.062% λ (Å) $z = 1.51703$

3 > +6.0 σ

1 < -6.0 σ