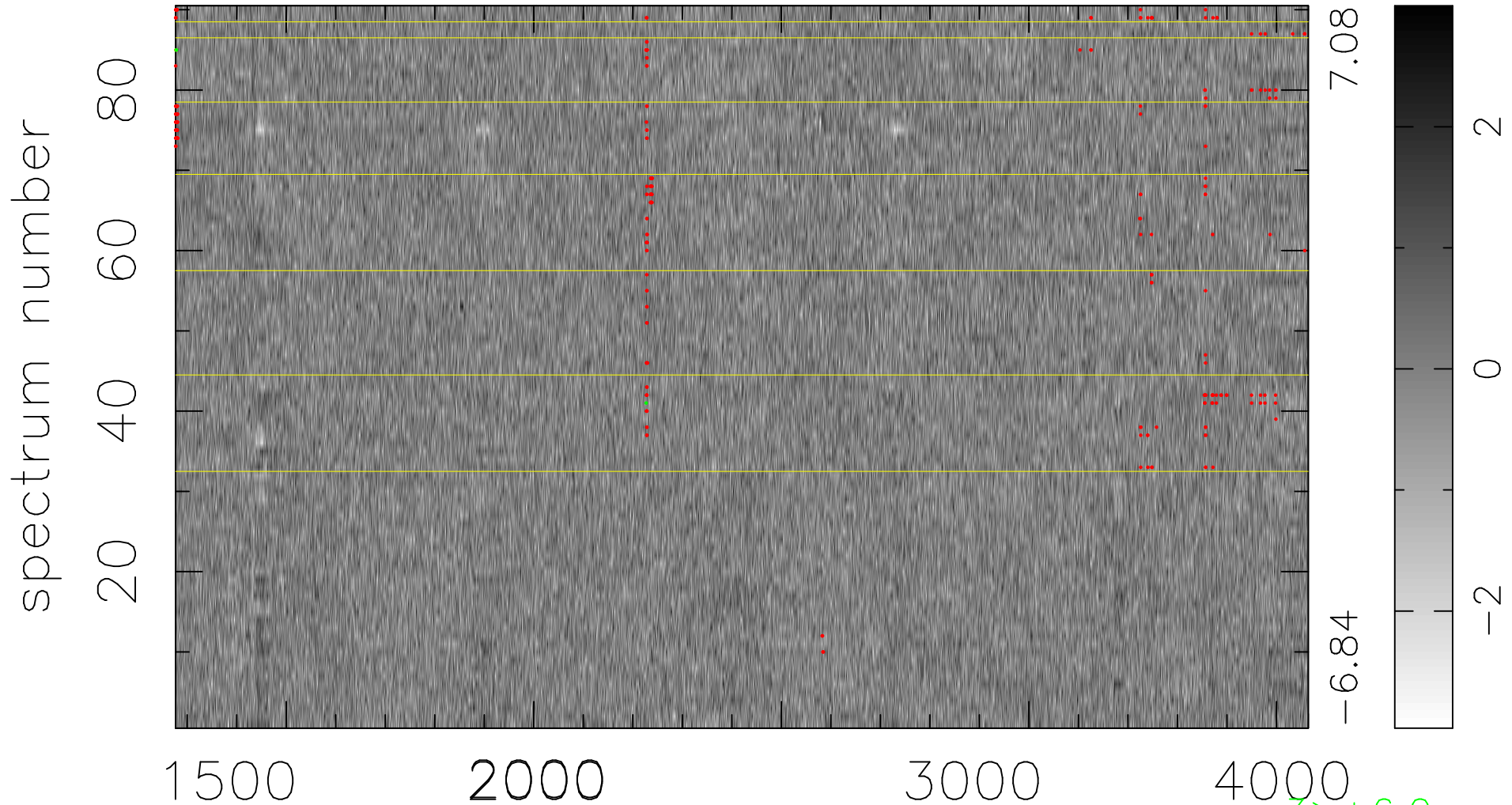


$$\chi(\lambda, t) = ( \text{Data} - \text{Model } AC_5 ) / \sigma \chi$$

$$\chi^2 / (411840 - 4966) = 0.924 \Rightarrow 1.007$$

4576x90



bad:254=0.062%  $\lambda$  (Å)  $z = 1.51703$

3 > +6.0 $\sigma$

1 < -6.0 $\sigma$