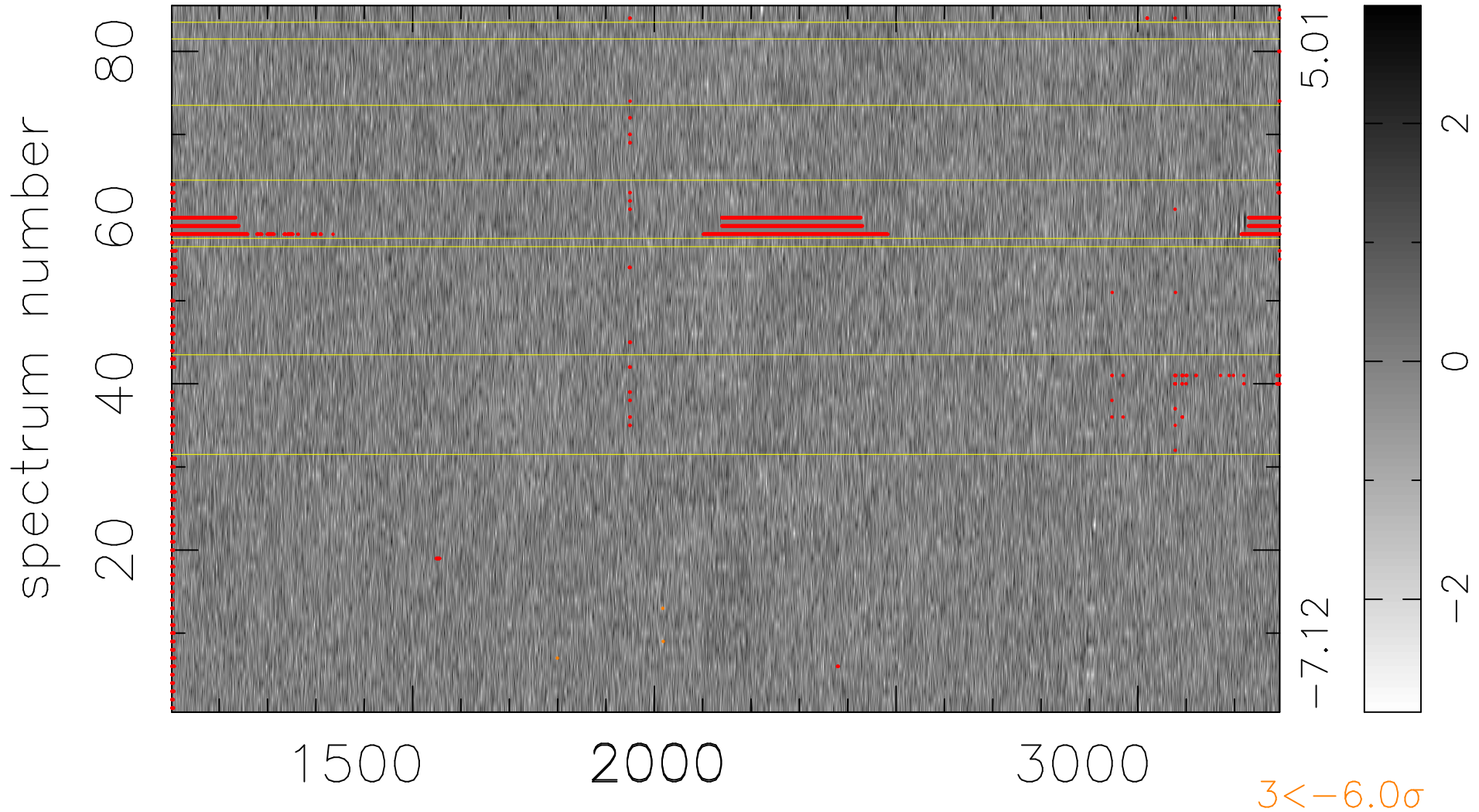


$$\chi(\lambda, t) = (\text{Data} - \text{Model } \text{AC}_5\text{B}_5\text{F}) / \sigma \chi$$

$$\chi^2 / (389640 - 5281) = 0.945 \Rightarrow 1.008$$

4584x85



bad:3989=1.0%

λ (Å) $z = 1.86164$