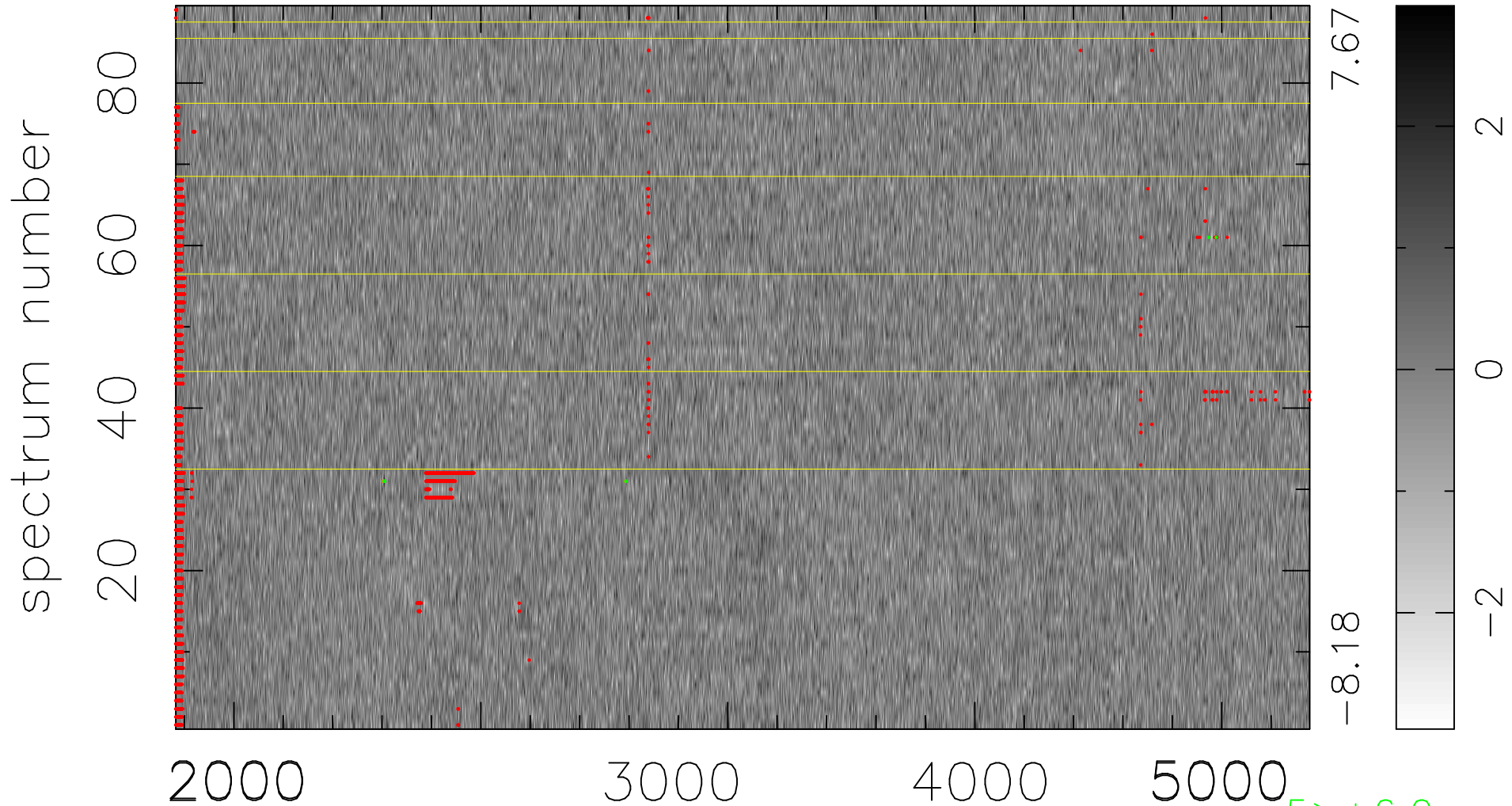


$$\chi(\lambda, t) = (\text{Data} - \text{Model } \text{AC}_5\text{B}_4\text{F}) / \sigma \chi$$

$$\chi^2 / (408688 - 5249) = 0.943 \Rightarrow 1.007$$

4592x89



bad:2466=0.60% λ (Å) $z = 0.89978$

5 > +6.0 σ

3 < -6.0 σ