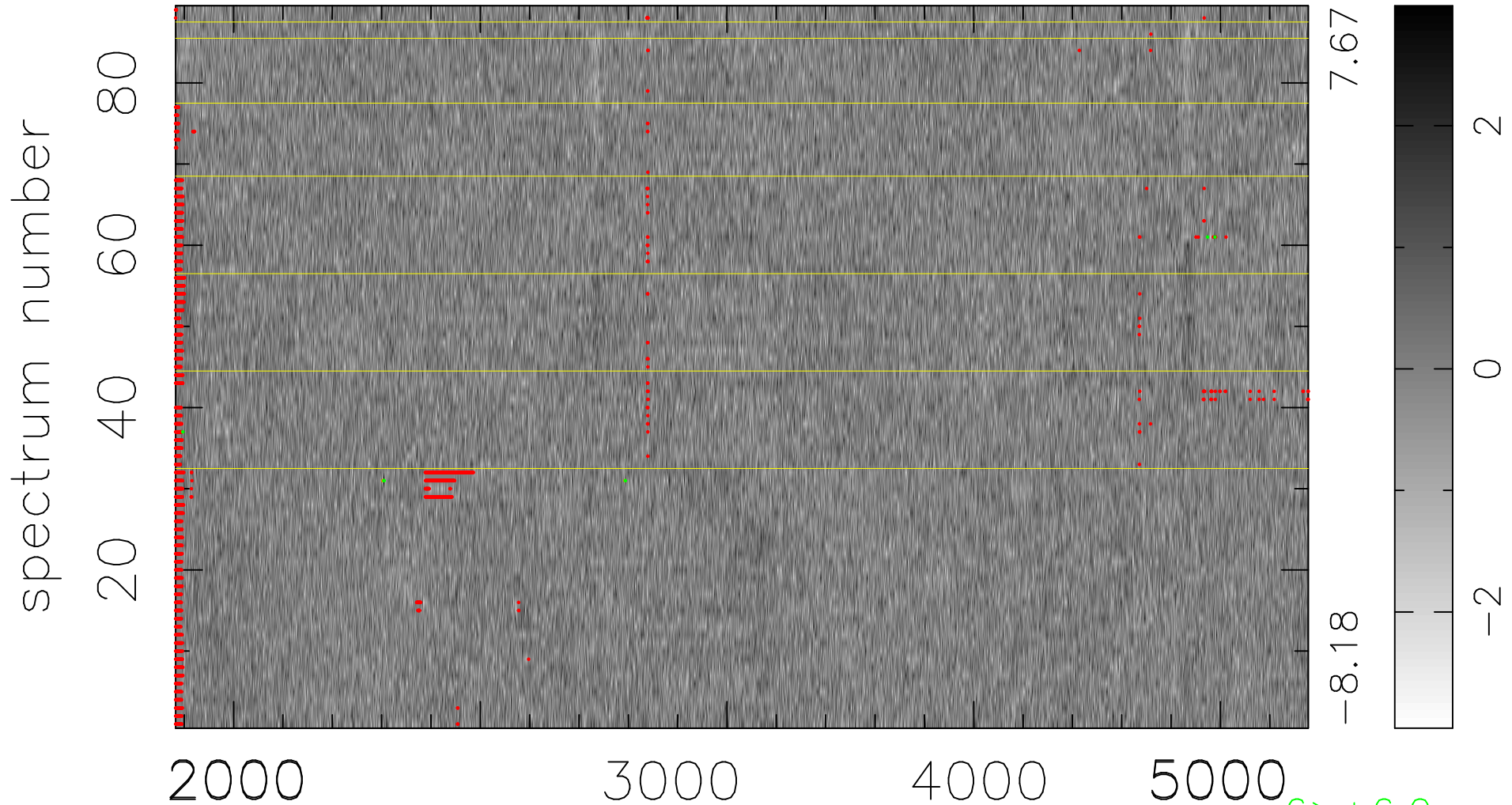


$$\chi(\lambda, t) = (\text{Data} - \text{Model AC}_5\text{F}) / \sigma \chi$$

$$\chi^2 / (408688 - 5069) = 0.946 \Rightarrow 1.006$$

4592x89



7.67

-8.18

2

0

-2

6 > +6.0σ

3 < -6.0σ

bad:2466=0.60% λ (Å) z = 0.89978