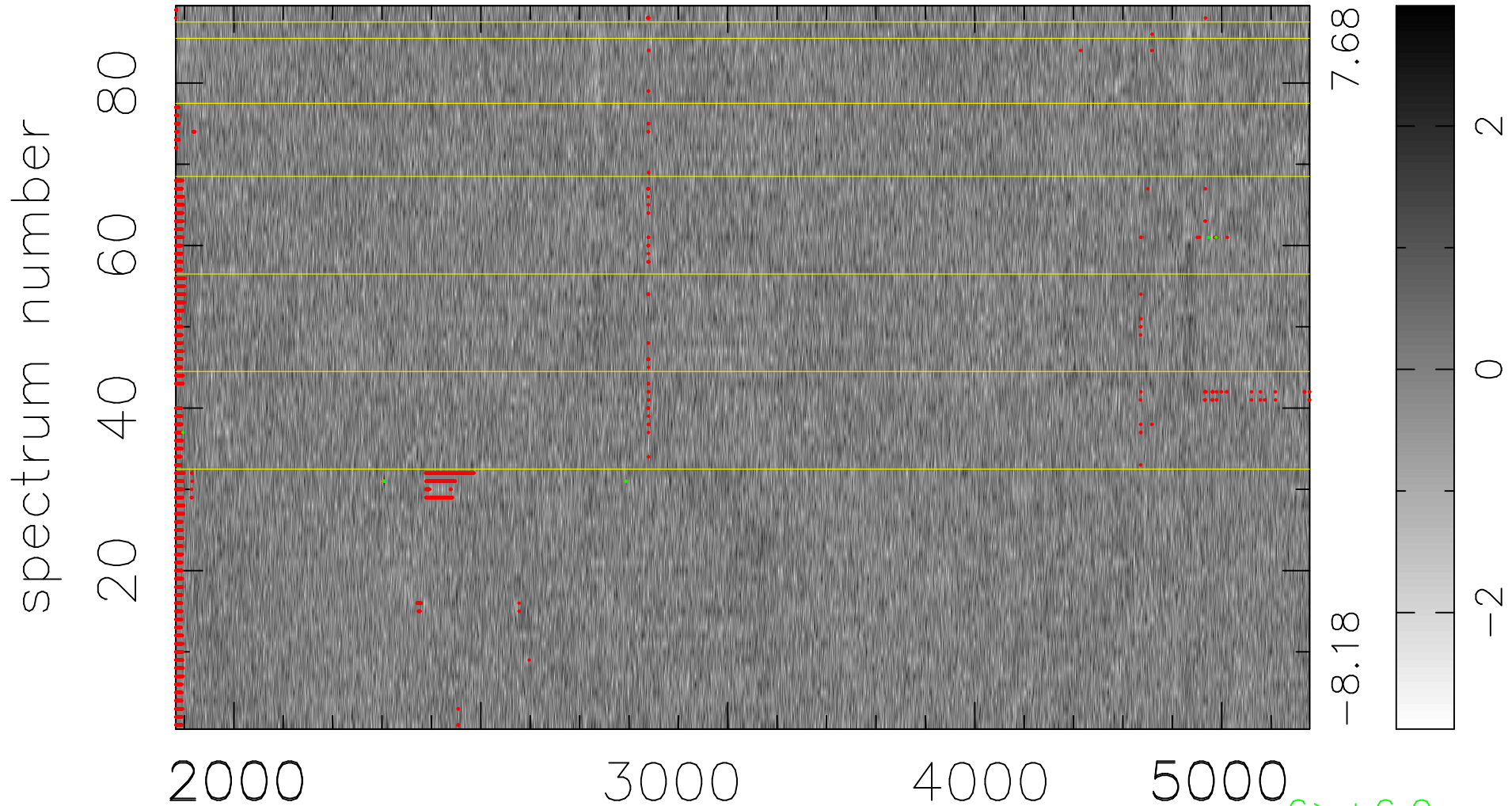


$$\chi(\lambda,t) = (\text{Data} - \text{Model } AC_5) / \sigma \chi$$

$$\chi^2 / (408688 - 4980) = 0.946 \Rightarrow 1.006$$

4592x89



bad:2466=0.60% λ (Å) $z = 0.89978$

6 > +6.0σ

3 < -6.0σ