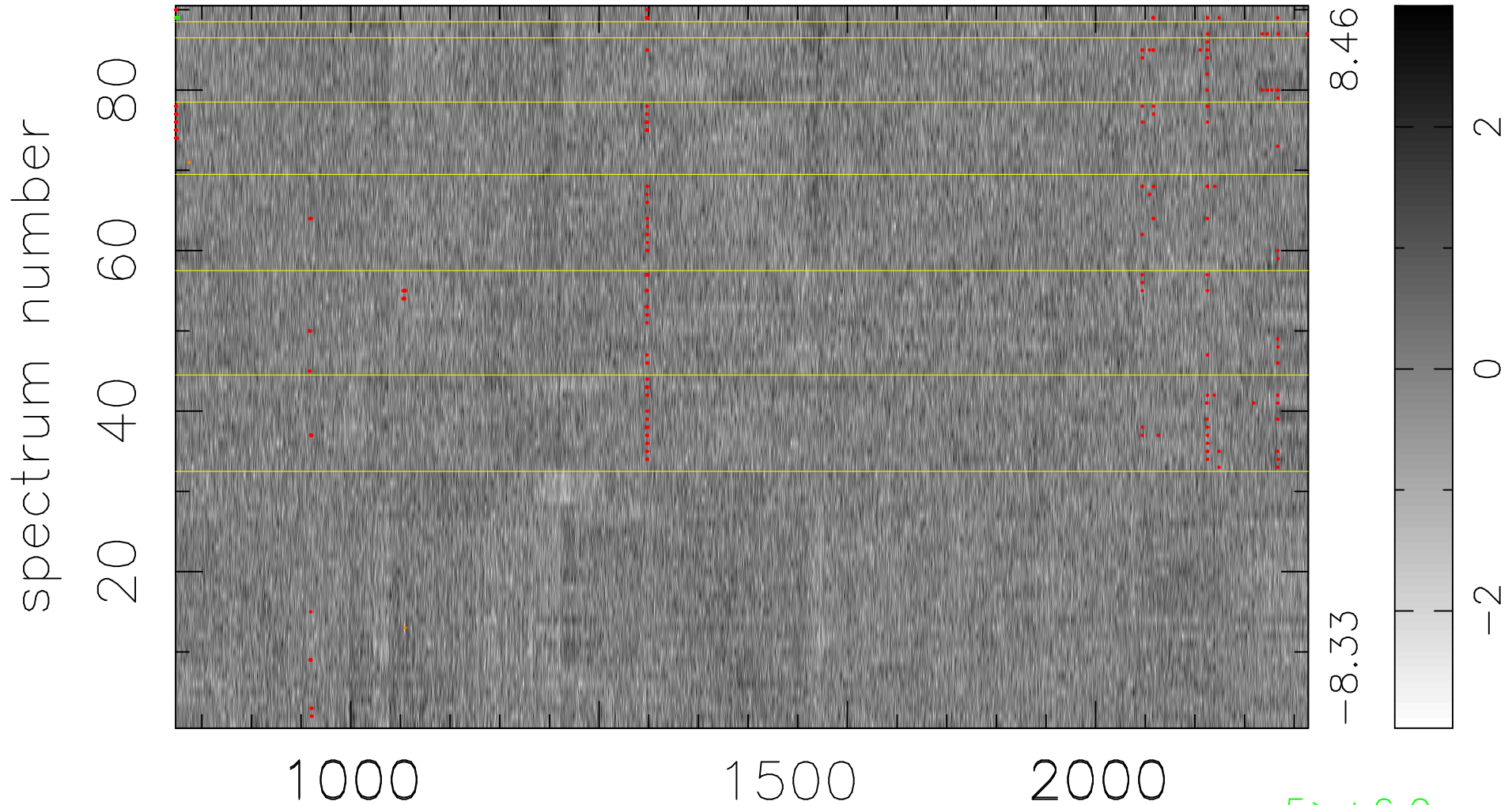


$$\chi(\lambda, t) = ( \text{Data} - \text{Model AC}_5\text{F} ) / \sigma \chi$$

$$\chi^2 / (410670 - 5230) = 0.992 \Rightarrow 1.008$$

4563x90



bad:246=0.060%  $\lambda$  (Å)  $z = 3.23810$

5 > +6.0 $\sigma$

6 < -6.0 $\sigma$