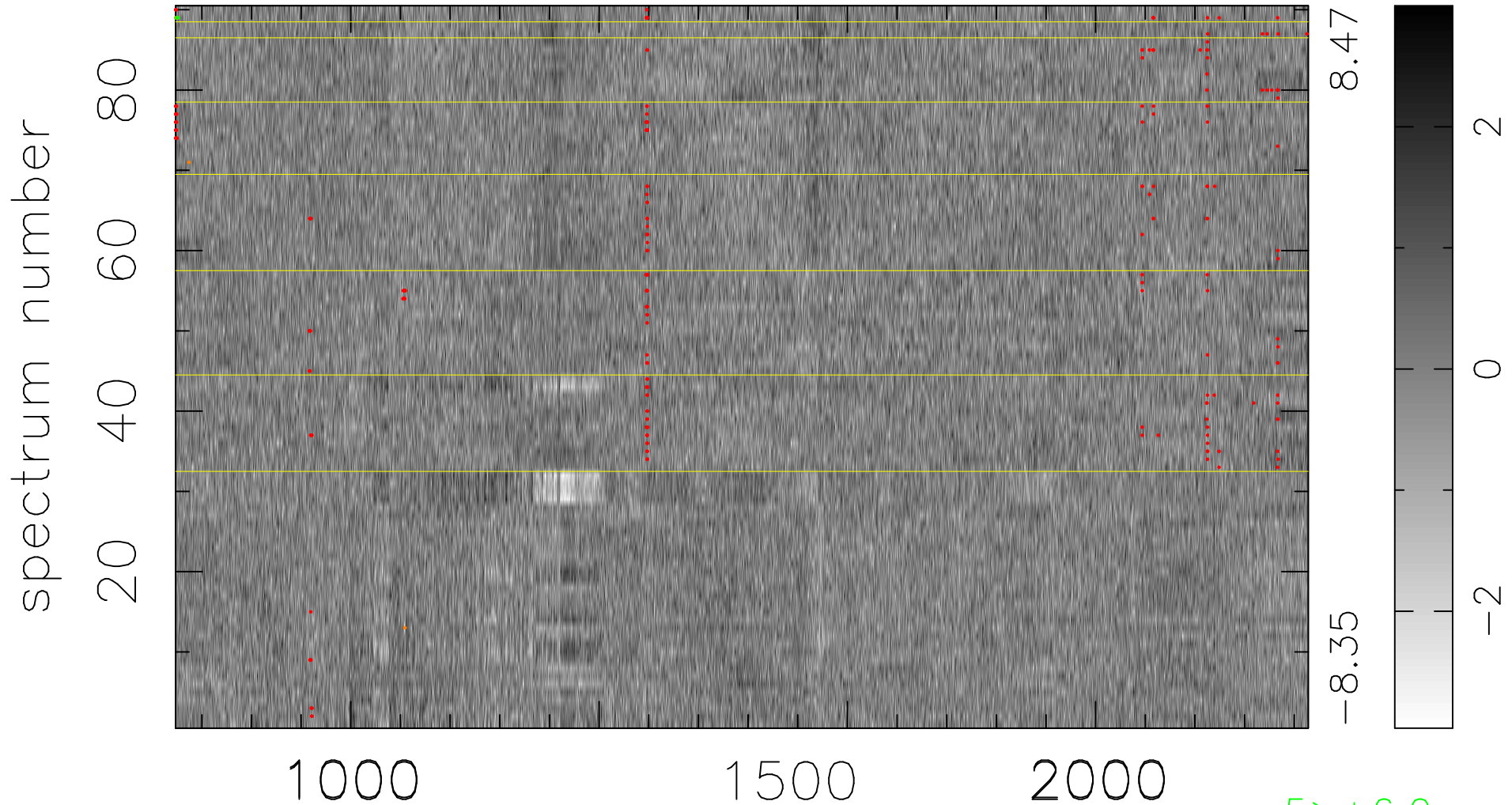


$$\chi(\lambda, t) = (\text{Data} - \text{Model } AC_5) / \sigma \chi$$

$$\chi^2 / (410670 - 5140) = 1.019 \Rightarrow 1.007$$

4563x90



bad:246=0.060% λ (Å) $z = 3.23810$

5 > +6.0 σ

6 < -6.0 σ