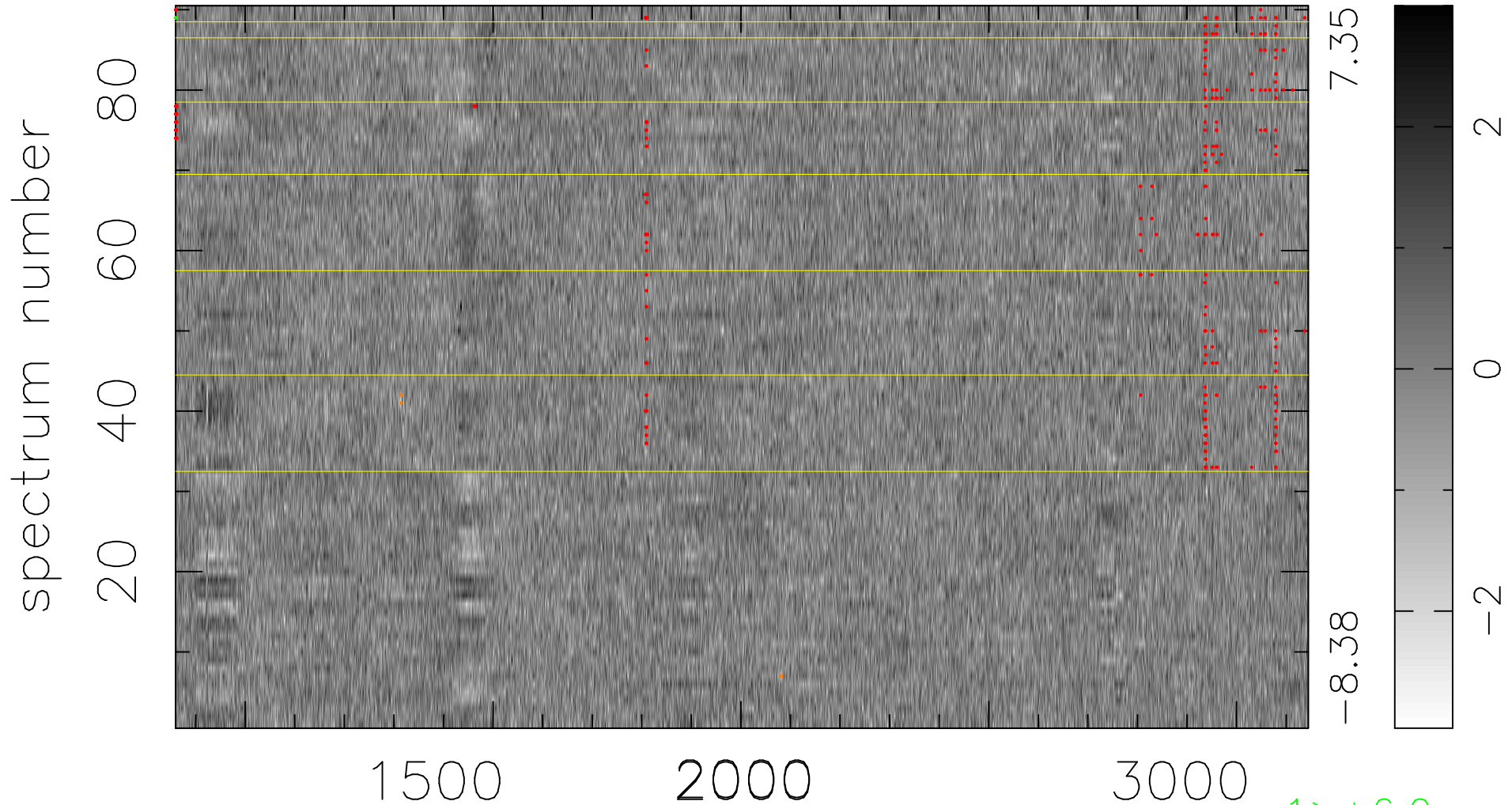


$$\chi(\lambda, t) = ( \text{Data} - \text{Model AC}_5\text{F} ) / \sigma \chi$$

$$\chi^2 / (411390 - 5325) = 0.975 \Rightarrow 1.008$$

4571 × 90



bad:279=0.068%  $\lambda$  (Å)  $z = 2.05271$

1 > +6.0σ

6 < -6.0σ