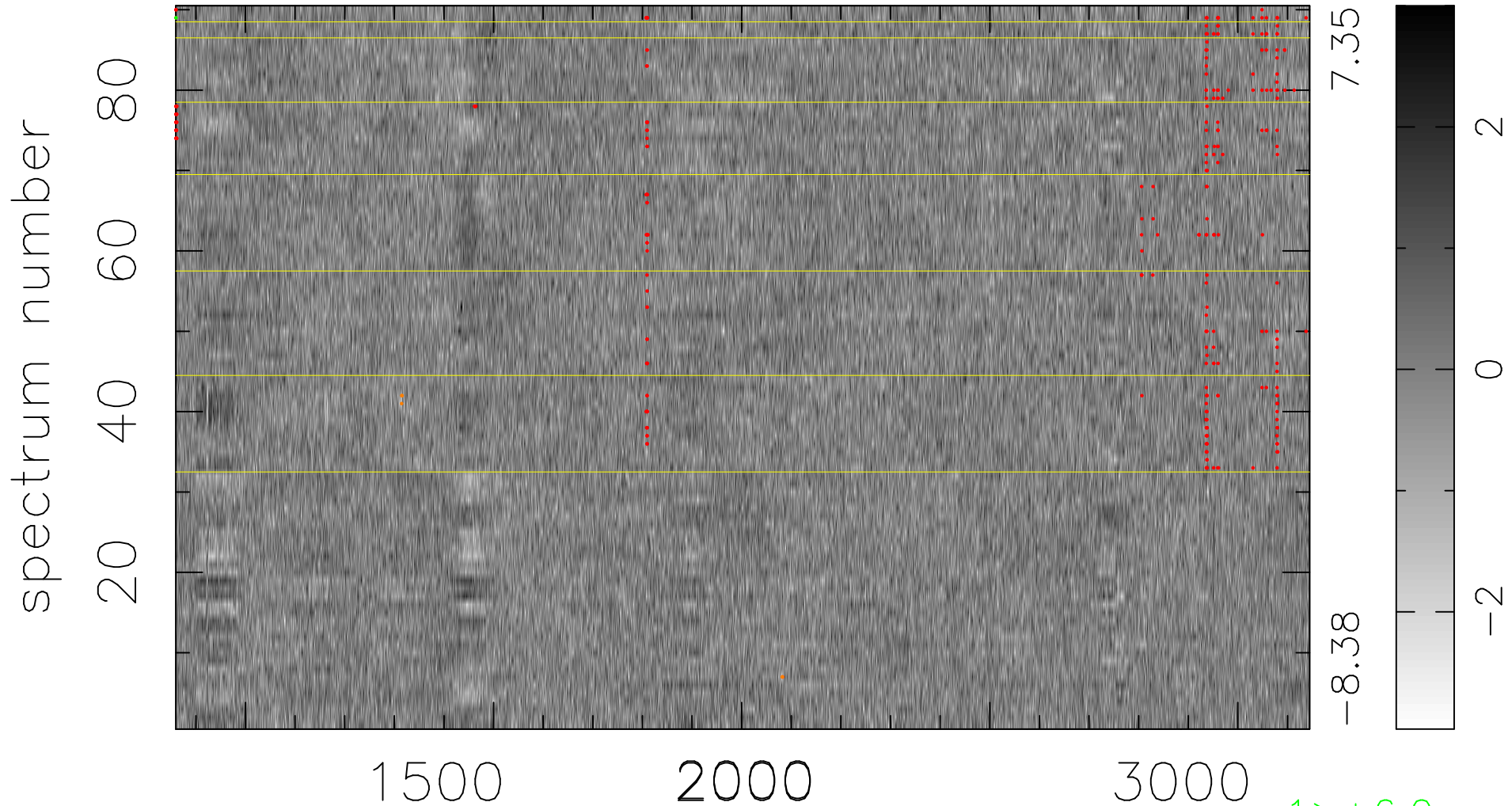


$$\chi(\lambda,t) = (\text{Data} - \text{Model } AC_5) / \sigma \chi$$

$$\chi^2 / (411390 - 5235) = 0.975 \Rightarrow 1.007$$

4571 × 90



bad:279=0.068% λ (Å) $z = 2.05271$

1 > +6.0σ

6 < -6.0σ