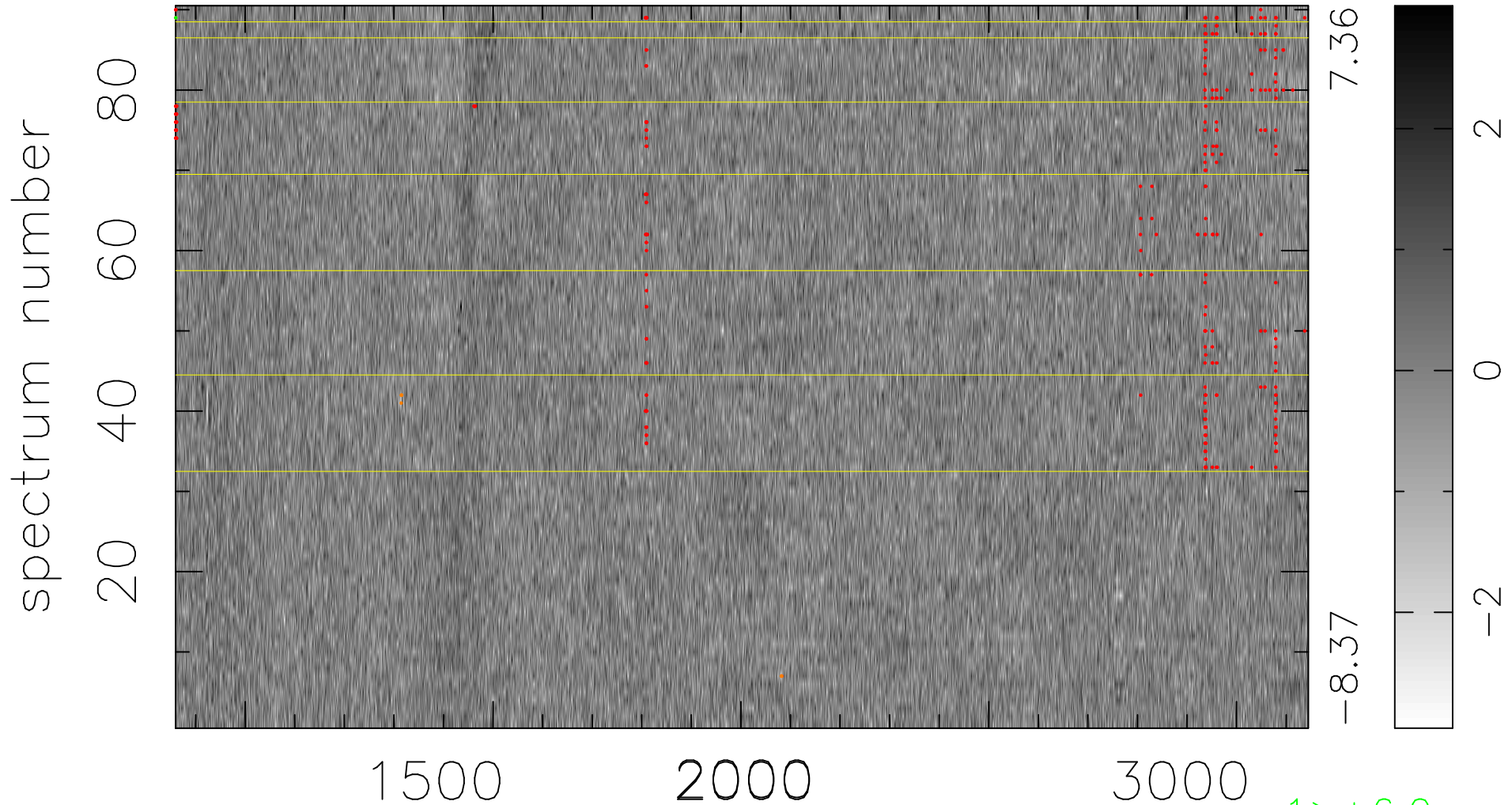


$$\chi(\lambda, t) = (\text{Data} - \text{Model } \text{AC}_5\text{B}_7\text{F}) / \sigma \chi$$

$$\chi^2 / (411390 - 5433) = 0.955 \Rightarrow 1.009$$

4571 × 90



bad:279=0.068% λ (Å) $z = 2.05271$

1 > +6.0σ

6 < -6.0σ