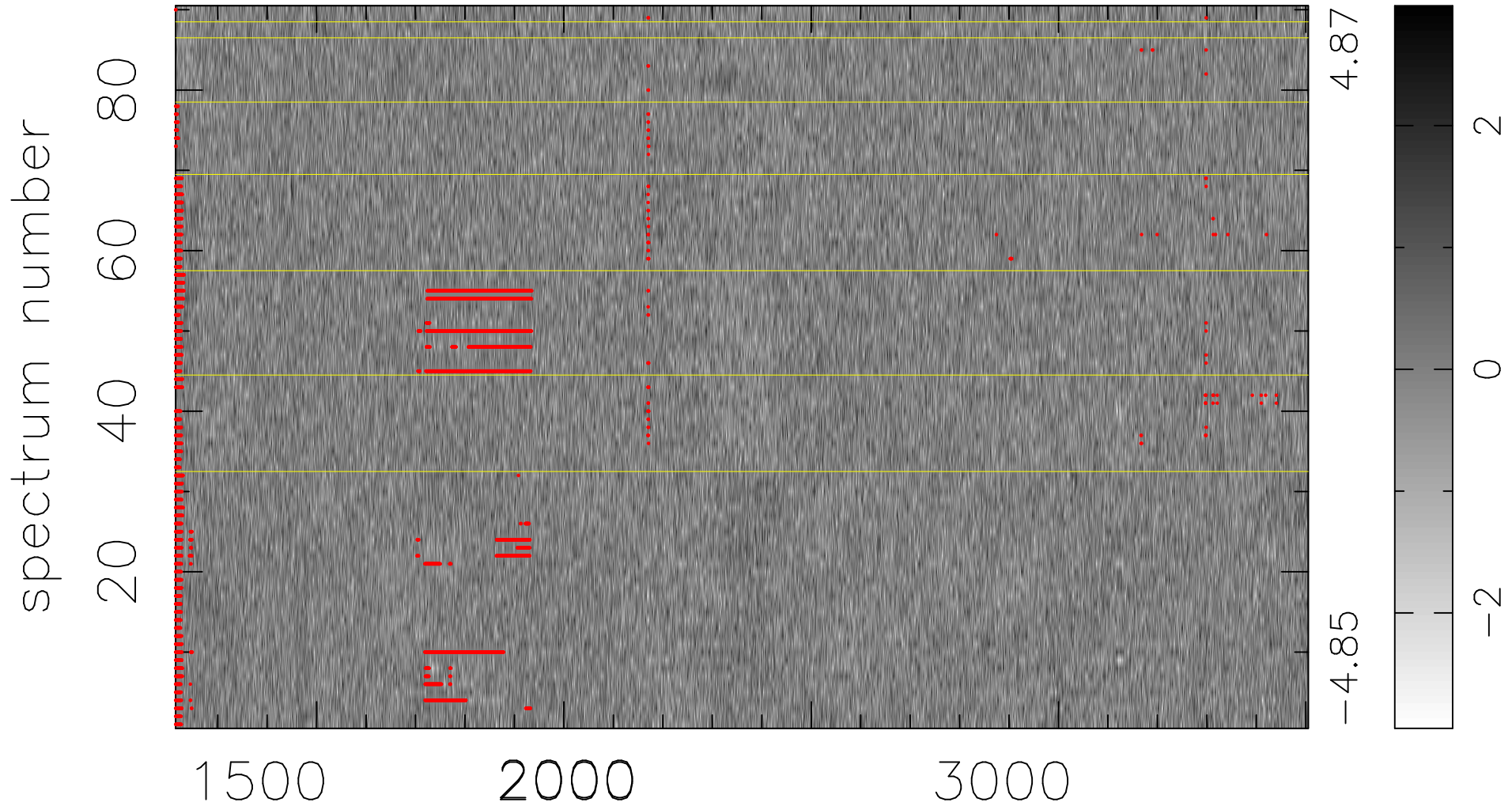


$$\chi(\lambda, t) = (\text{Data} - \text{Model } \text{AC}_5\text{B}_5\text{F}) / \sigma \chi$$

$$\chi^2 / (412290 - 5284) = 0.937 \Rightarrow 1.007$$

4581 × 90



bad:4946=1.2% λ (Å) $z = 1.58470$