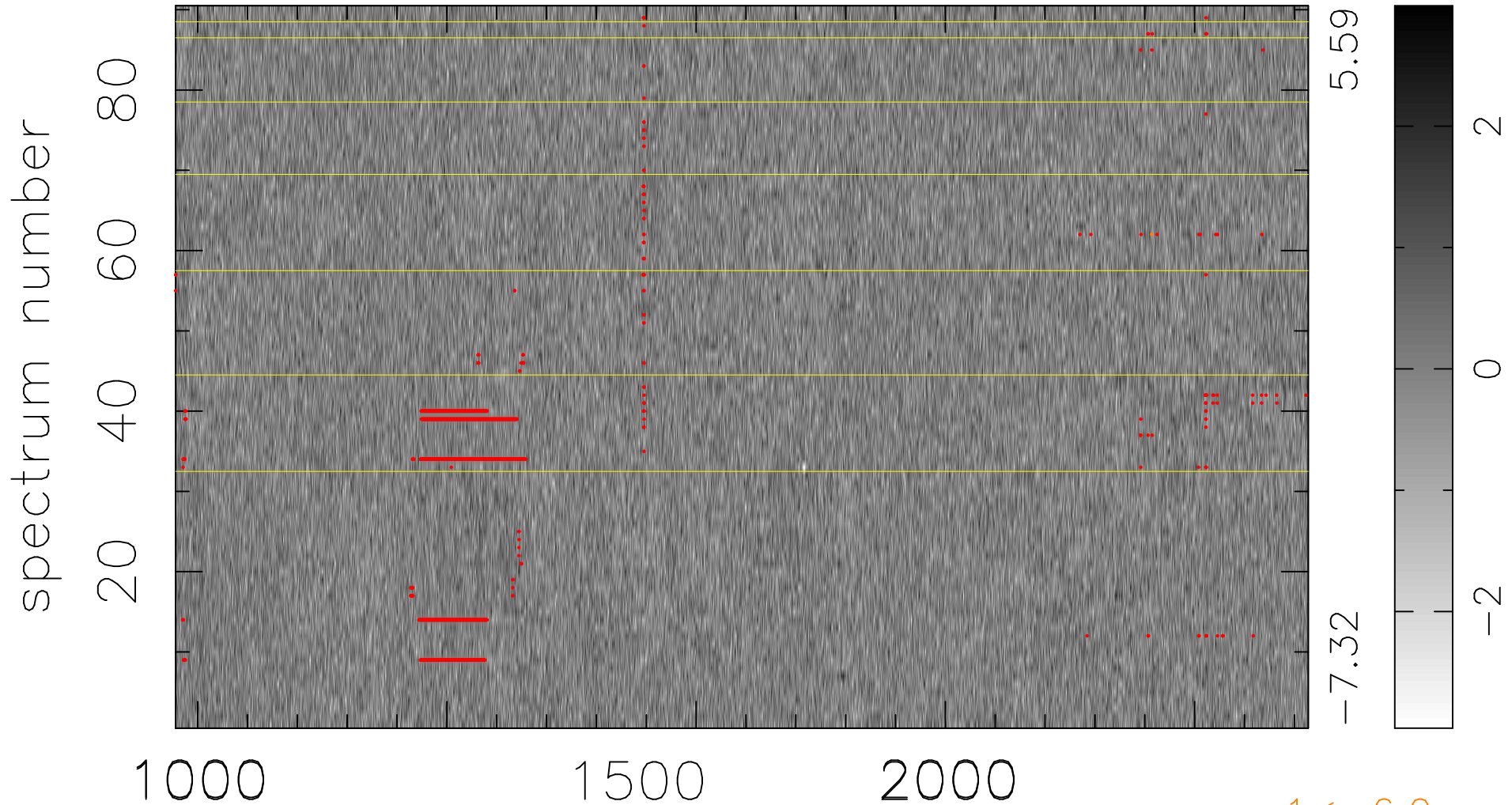


$$\chi(\lambda, t) = ( \text{Data} - \text{Model } \text{AC}_5\text{B}_6\text{F} ) / \sigma \chi$$

$$\chi^2 / (409050 - 5390) = 0.934 \Rightarrow 1.007$$

4545x90



$1 < -6.0\sigma$

bad:1839=0.45%  $\lambda$  (Å)  $z = 2.69419$