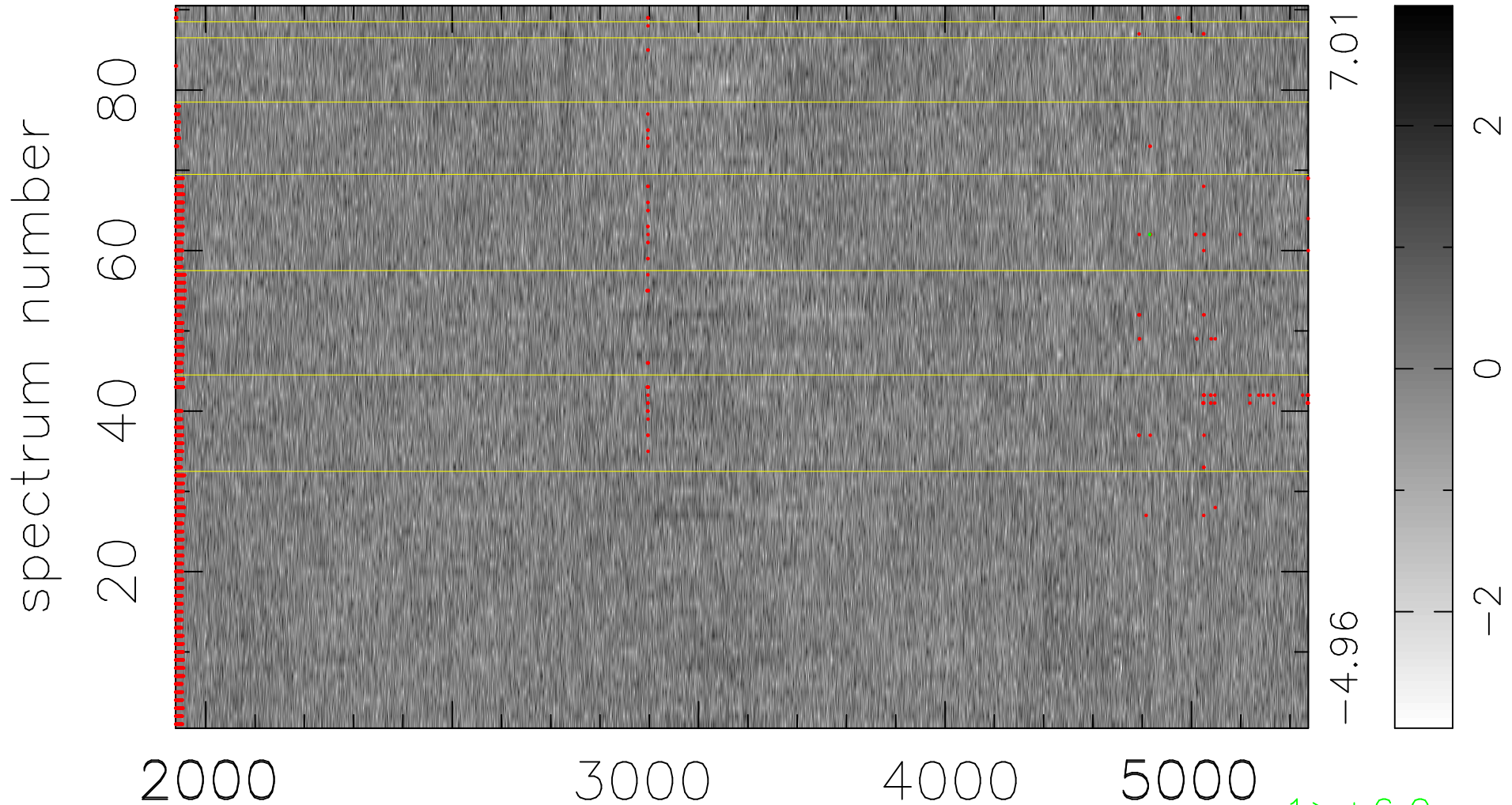


$$\chi(\lambda, t) = (\text{Data} - \text{Model } \text{AC}_5\text{B}_3\text{F}) / \sigma \chi$$

$$\chi^2 / (413730 - 5092) = 0.941 \Rightarrow 1.006$$

4597 × 90



bad:2231=0.54% λ (Å) $z = 0.84976$