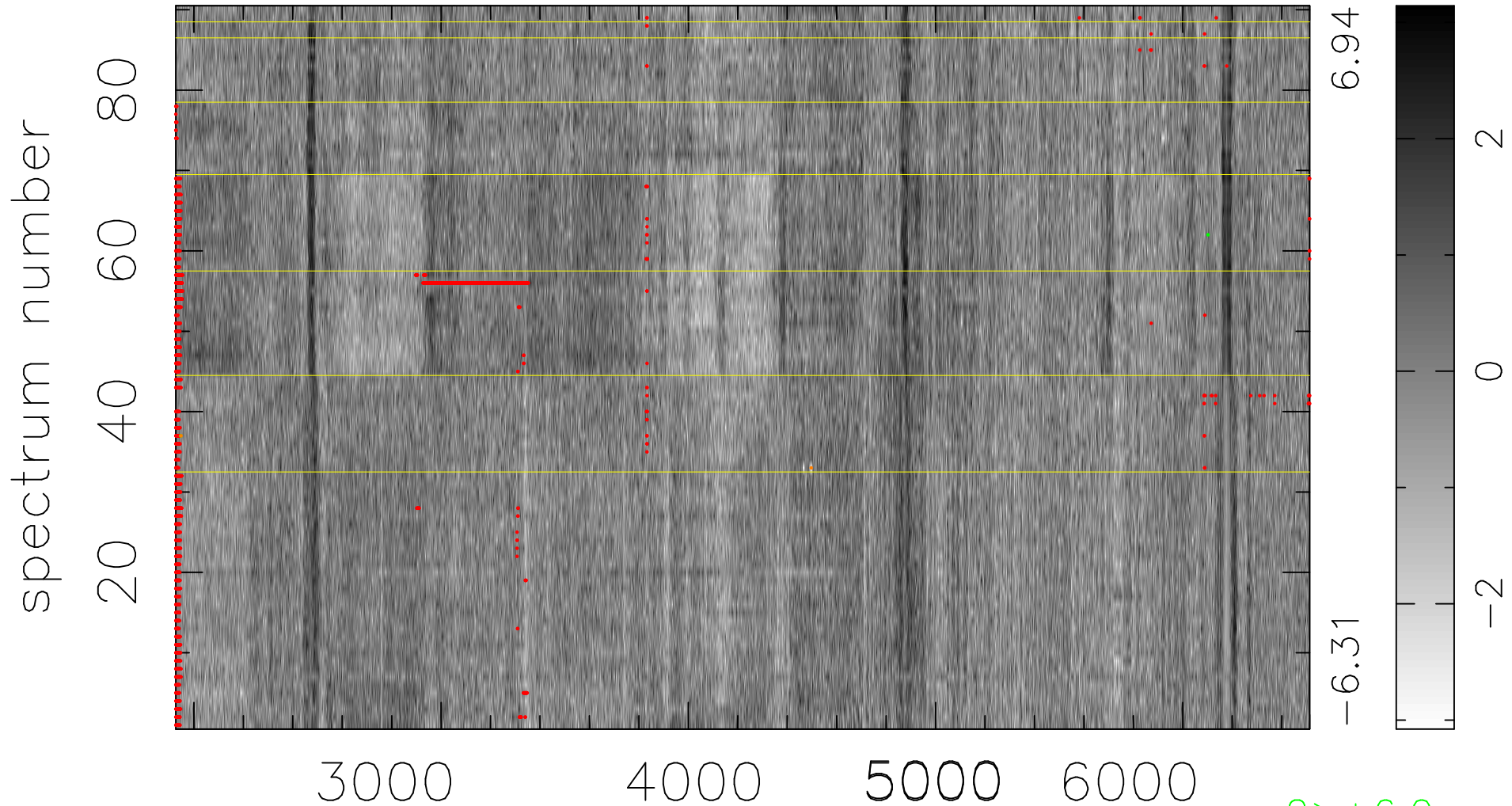


$$\chi(\lambda, t) = (\text{Data} - \text{Model } \text{AC}_5\text{B}_4\text{F}) / \sigma \chi$$

$$\chi^2 / (412830 - 5197) = 1.176 \Rightarrow 1.052$$

4587x90



bad:1891=0.46% λ (Å) $z = 0.45650$

2 > +6.0 σ

3 < -6.0 σ