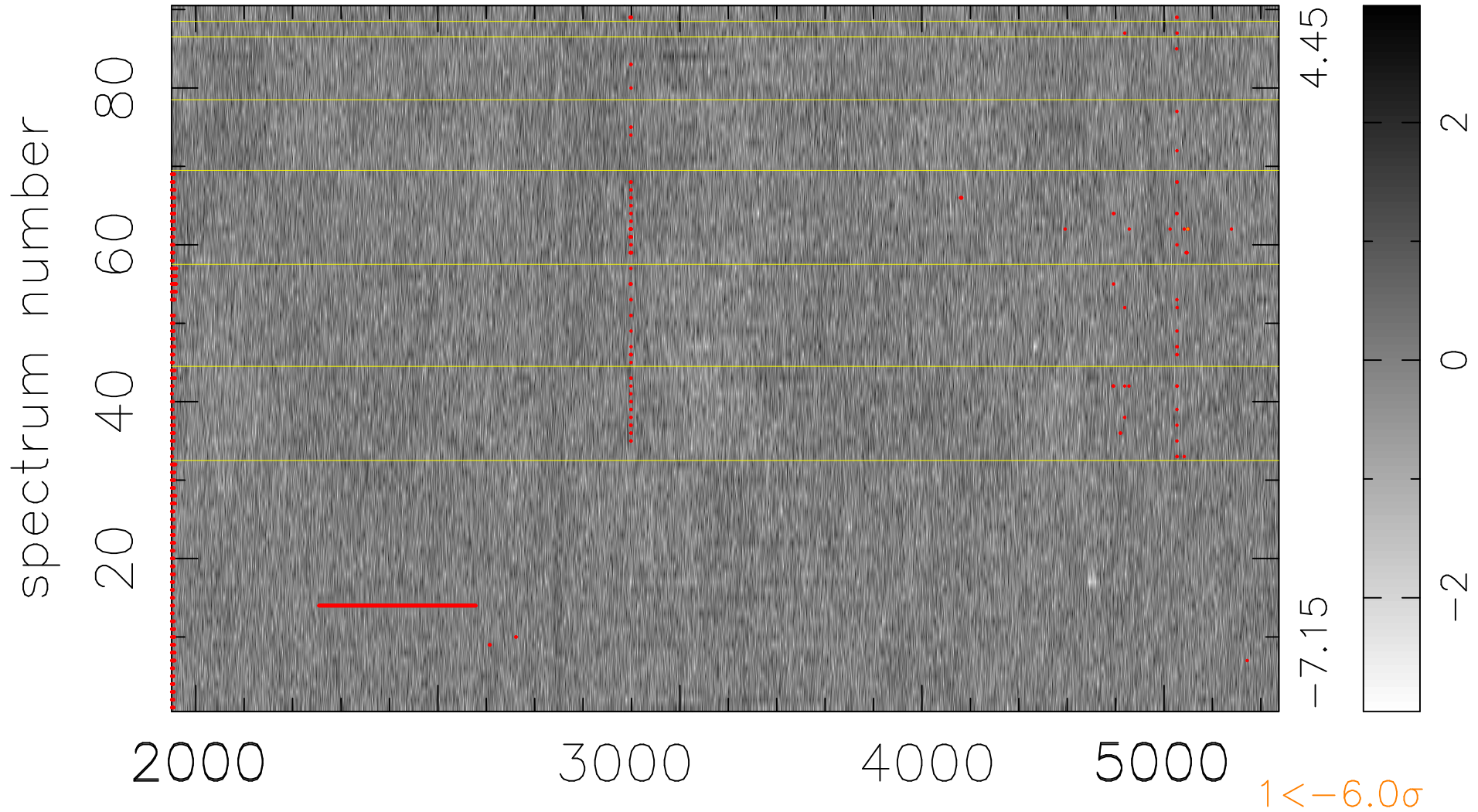


$$\chi(\lambda, t) = ( \text{Data} - \text{Model } \text{AC}_5\text{B}_3\text{F} ) / \sigma \chi$$

$$\chi^2 / (411750 - 5064) = 0.909 \Rightarrow 1.004$$

4575x90



bad:1535=0.37%  $\lambda$  (Å)  $z = 0.84827$