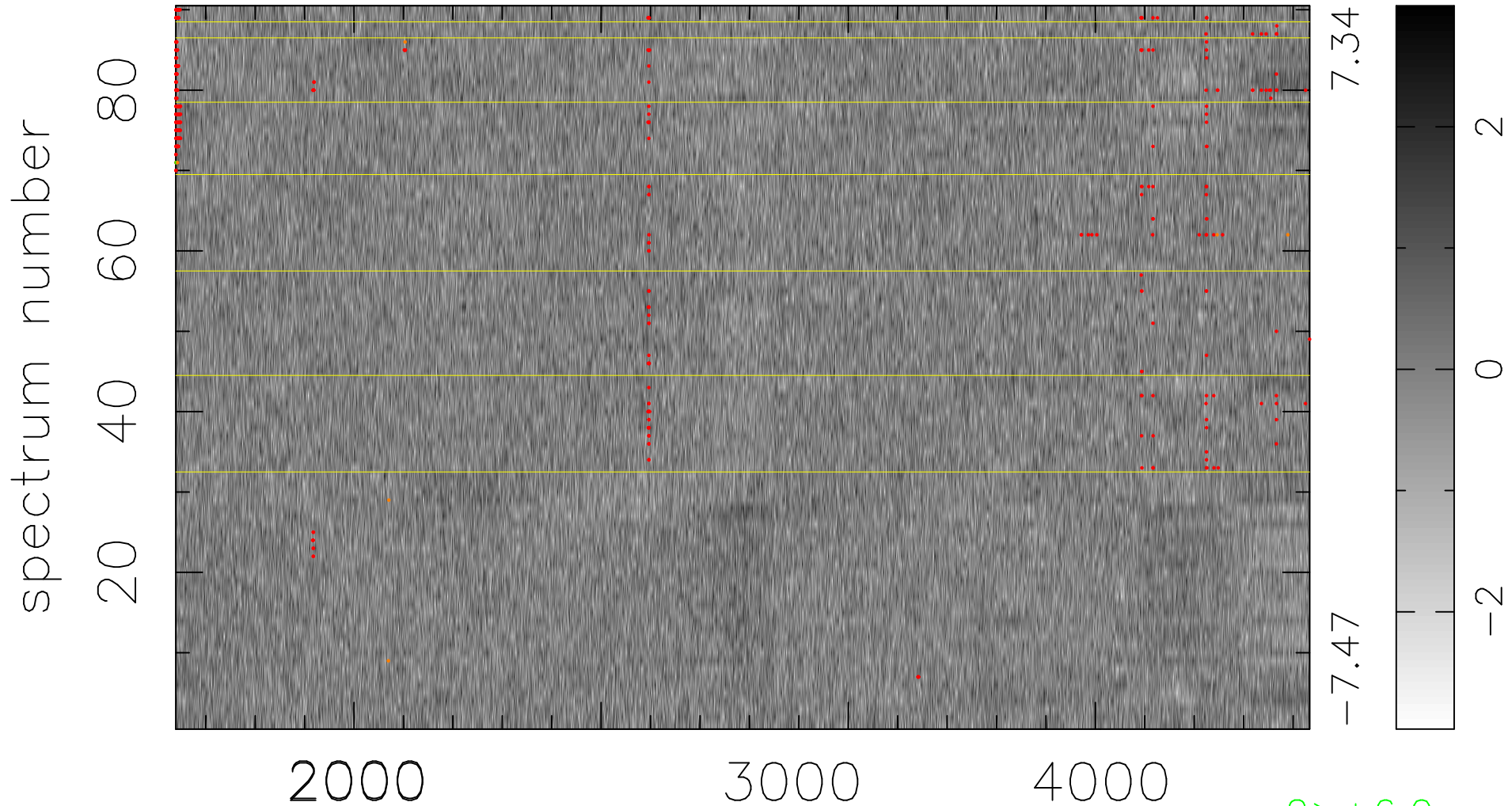


$$\chi(\lambda,t) = ( \text{Data} - \text{Model } AC_5 ) / \sigma \chi$$

$$\chi^2 / (413010 - 4893) = 0.962 \Rightarrow 1.007$$

4589x90



7.34

-7.47

2

0

-2

2000

3000

4000

2 > +6.0σ

7 < -6.0σ

bad:396=0.096% λ (Å) z = 1.12430