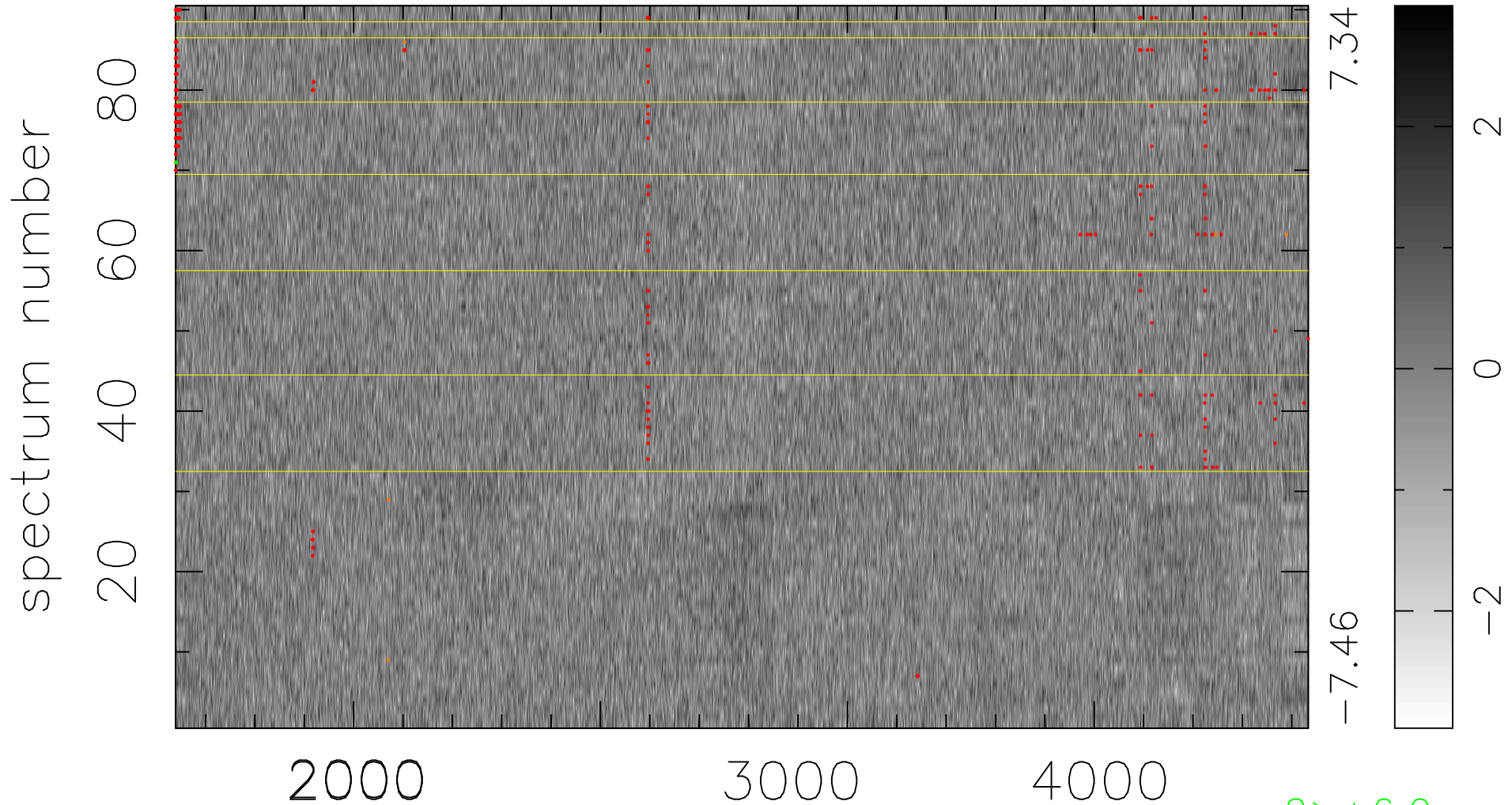


$$\chi(\lambda, t) = ( \text{Data} - \text{Model } \text{AC}_5\text{B}_3\text{F} ) / \sigma \chi$$

$$\chi^2 / (413010 - 5135) = 0.960 \Rightarrow 1.007$$

4589x90



bad:396=0.096%  $\lambda$  (Å)  $z = 1.12430$

2 > +6.0 $\sigma$

6 < -6.0 $\sigma$