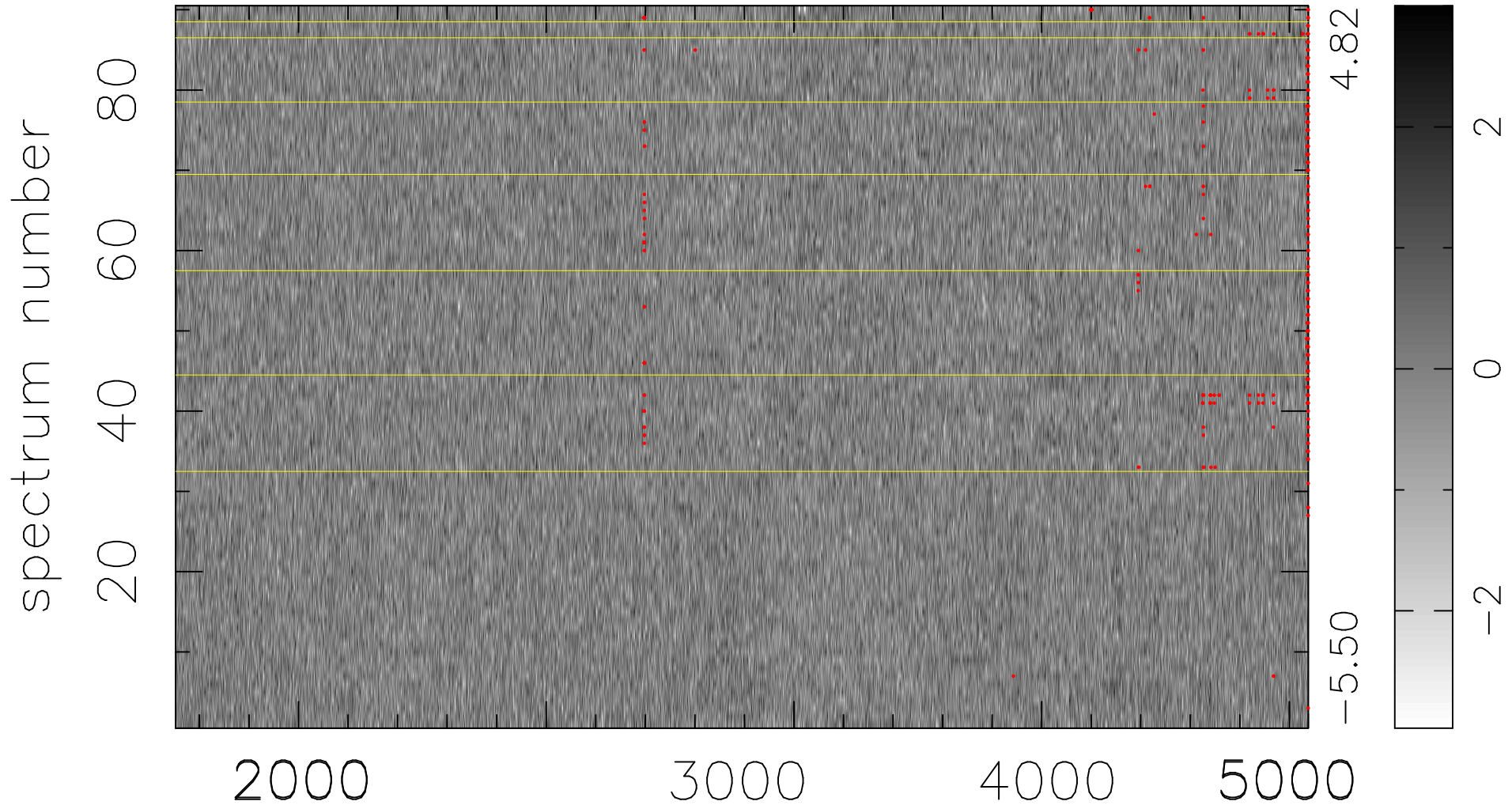


$$\chi(\lambda, t) = (\text{Data} - \text{Model } \text{AC}_5\text{B}_4\text{F}) / \sigma \chi$$

$$\chi^2 / (411570 - 5231) = 0.930 \Rightarrow 1.008$$

4573x90



bad:345=0.084% λ (Å) $z = 1.02719$