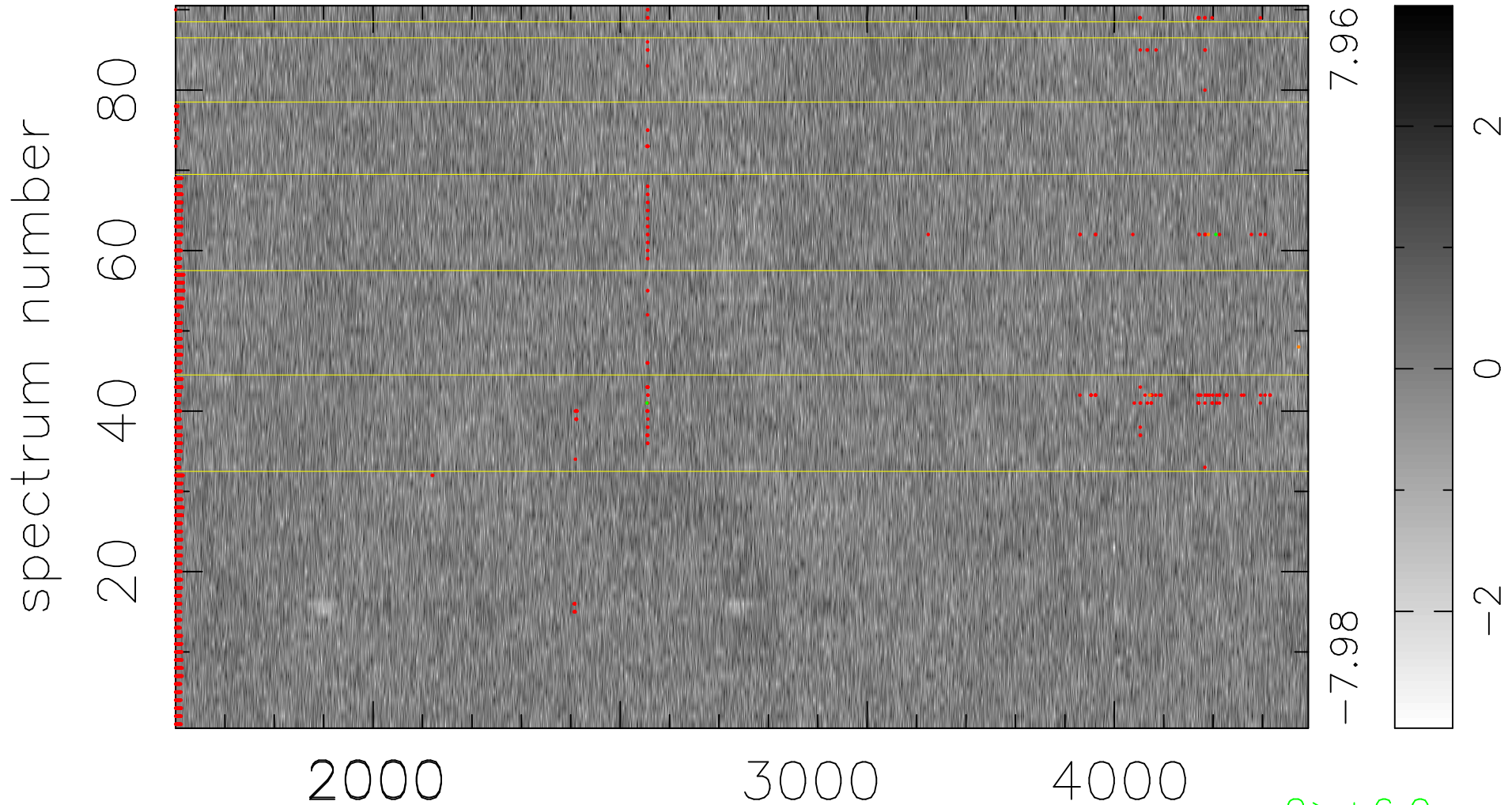


$$\chi(\lambda, t) = (\text{Data} - \text{Model AC}_5\text{F}) / \sigma \chi$$

$$\chi^2 / (412650 - 4961) = 0.981 \Rightarrow 1.007$$

4585x90



7.96
-7.98

2
0
-2

bad:1866=0.45% λ (Å) $z = 1.16476$

2 > +6.0 σ

4 < -6.0 σ