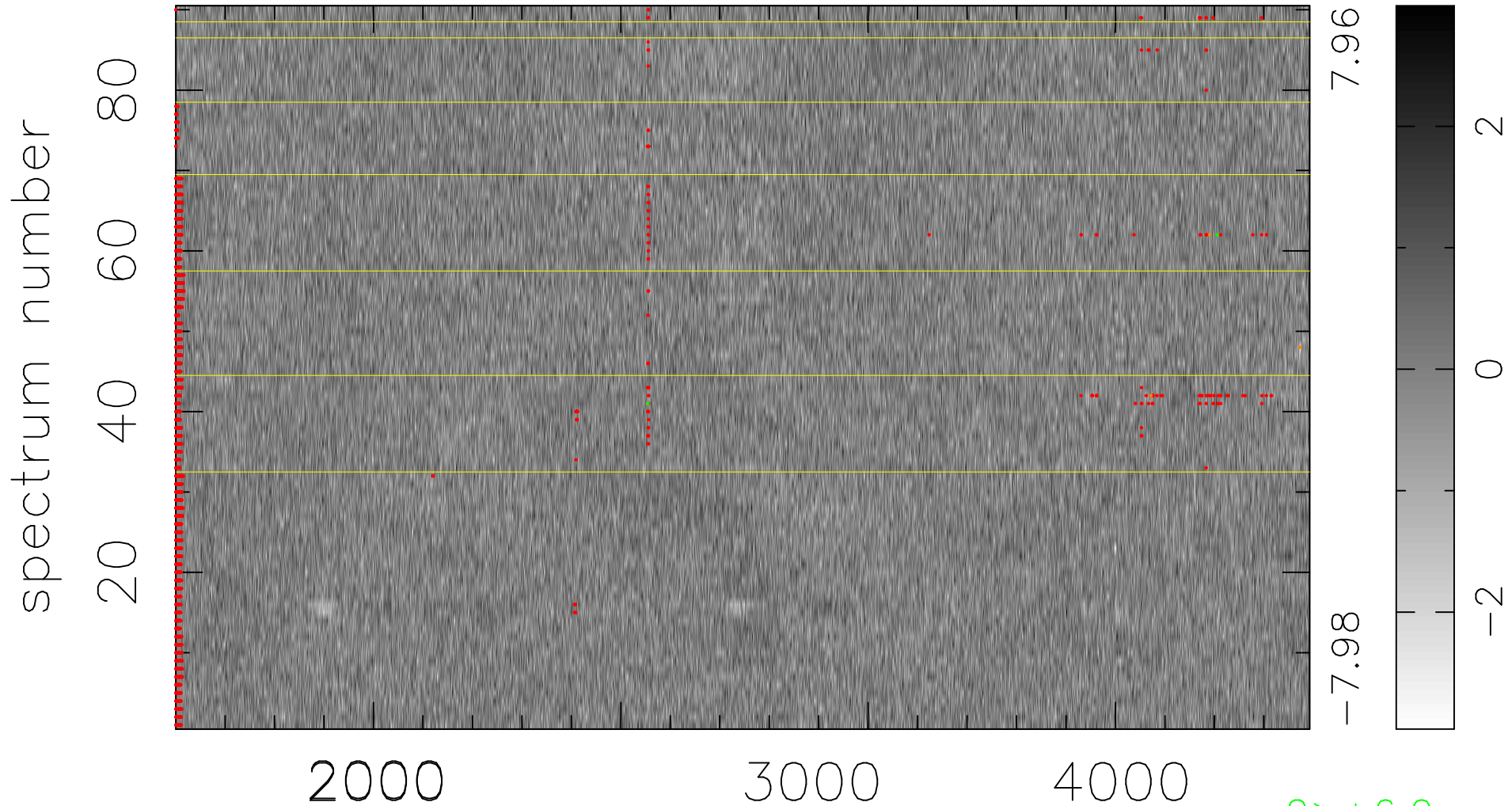


$$\chi(\lambda, t) = (\text{Data} - \text{Model } AC_5) / \sigma \chi$$

$$\chi^2 / (412650 - 4871) = 0.980 \Rightarrow 1.007$$

4585x90



bad:1866=0.45% λ (Å) $z = 1.16476$

2 > +6.0 σ

4 < -6.0 σ