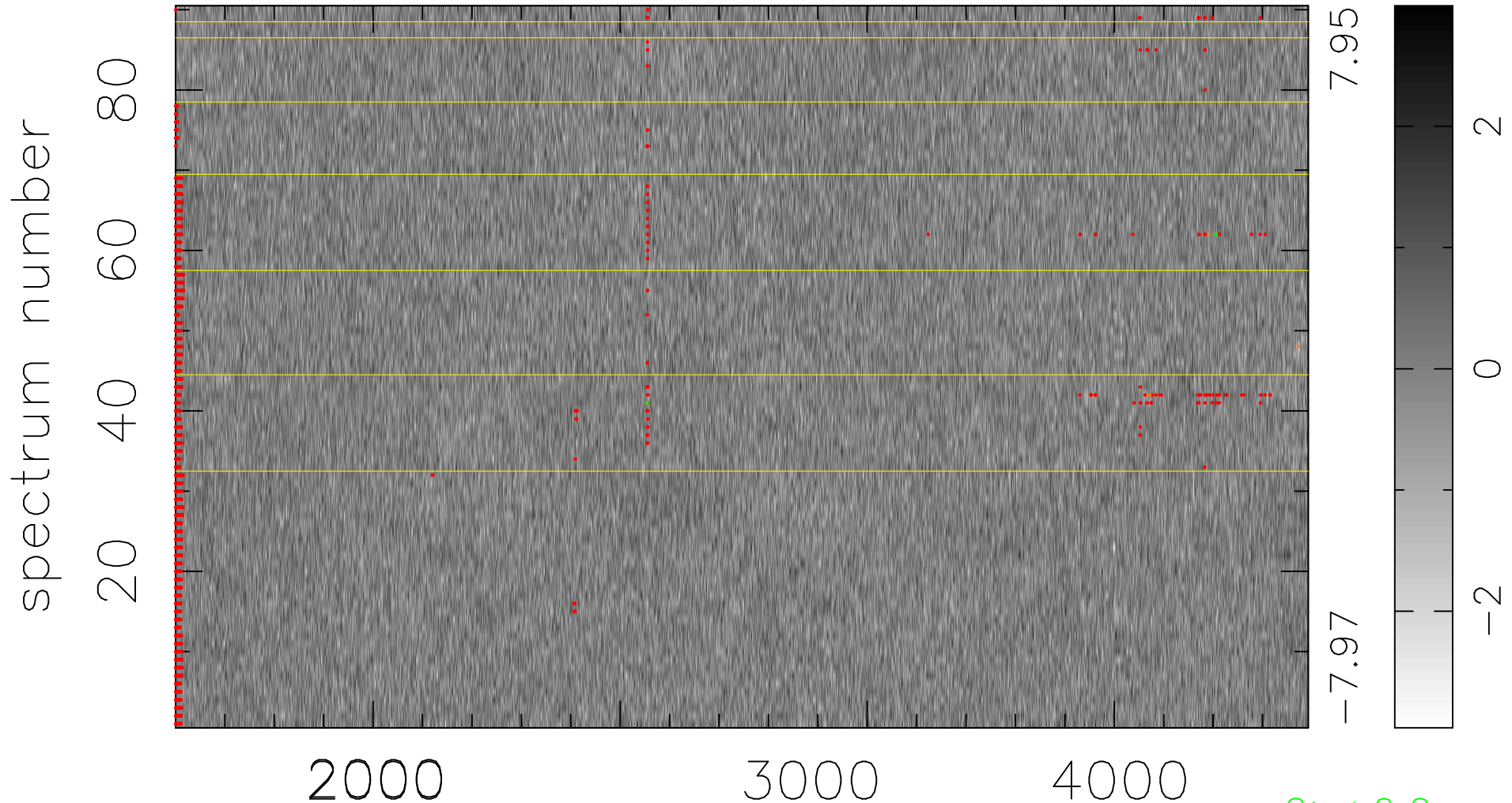


$$\chi(\lambda, t) = ( \text{Data} - \text{Model } \text{AC}_5\text{B}_3\text{F} ) / \sigma \chi$$

$$\chi^2 / (412650 - 5109) = 0.978 \Rightarrow 1.007$$

4585x90



bad:1866=0.45%     $\lambda$  (Å)     $z = 1.16476$

2 > +6.0σ

4 < -6.0σ