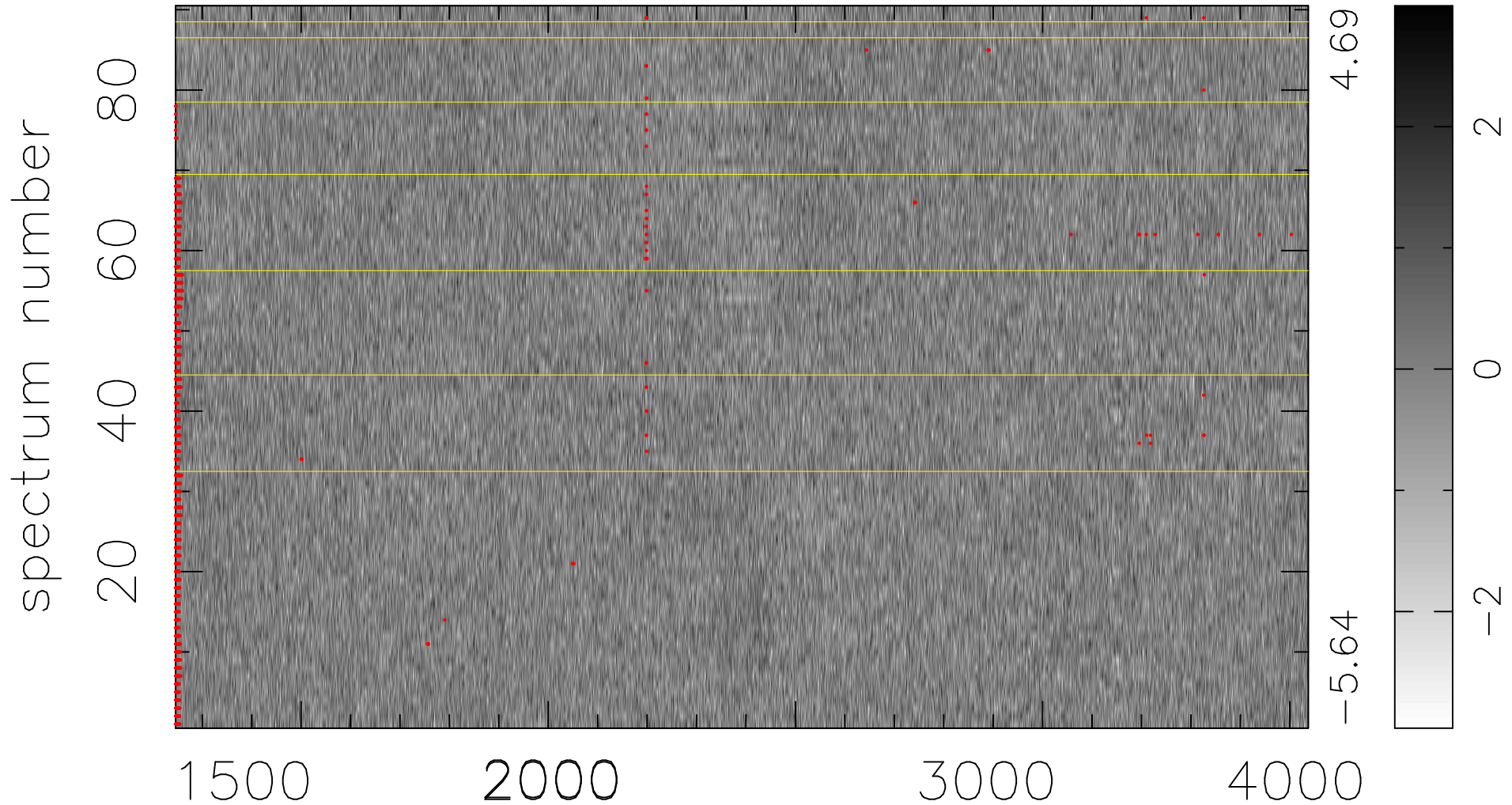


$$\chi(\lambda, t) = (\text{Data} - \text{Model } \text{AC}_5\text{B}_4\text{F}) / \sigma \chi$$

$$\chi^2 / (412470 - 5234) = 0.952 \Rightarrow 1.007$$

4583x90



bad:1345=0.33% λ (Å) $z = 1.55180$