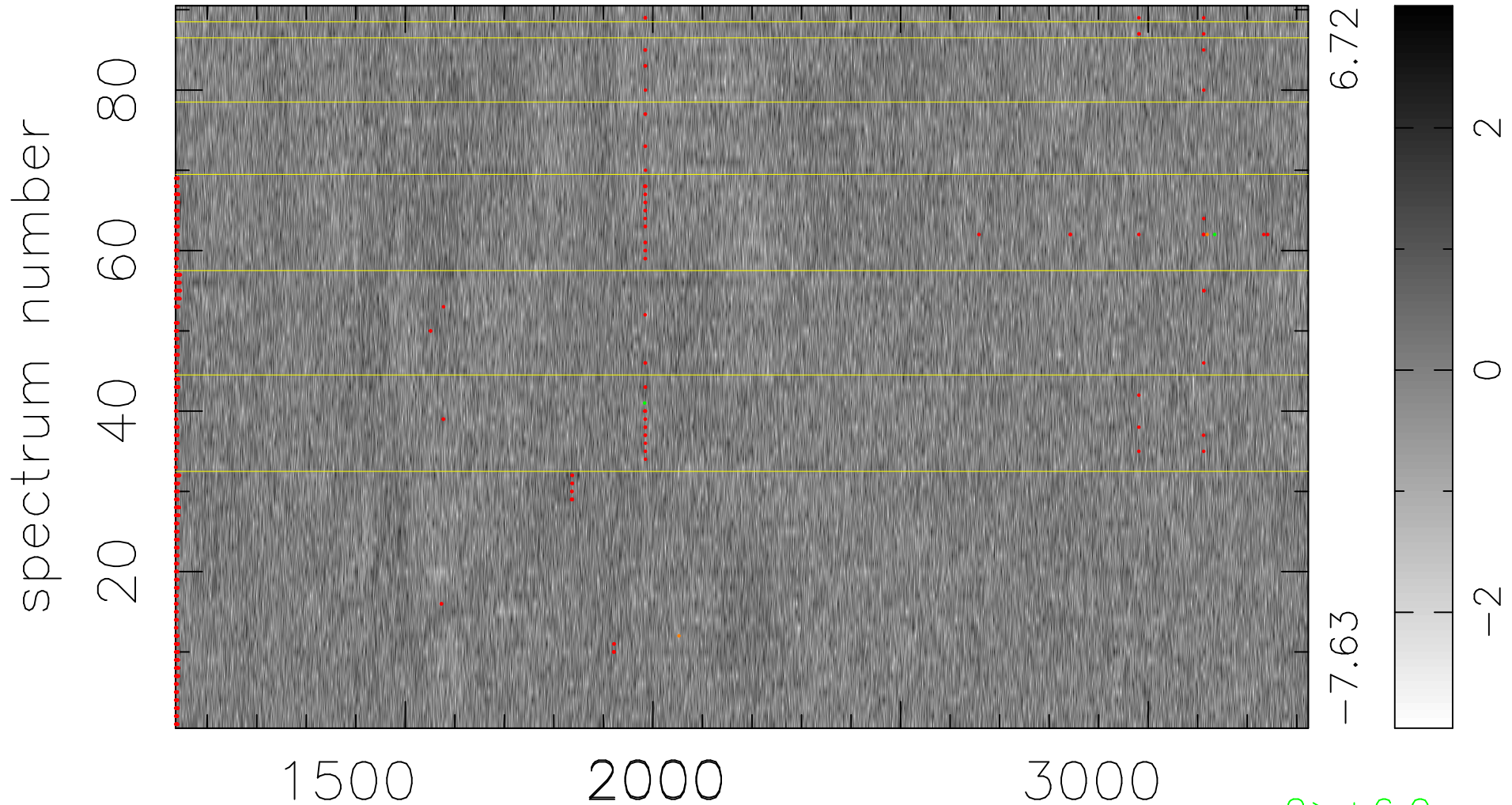


$$\chi(\lambda, t) = (\text{Data} - \text{Model } \text{AC}_5\text{B}_5\text{F}) / \sigma \chi$$

$$\chi^2 / (411750 - 5266) = 0.949 \Rightarrow 1.008$$

4575x90



bad:776=0.19%

λ (Å) $z = 1.81613$

$2 > +6.0\sigma$

$2 < -6.0\sigma$