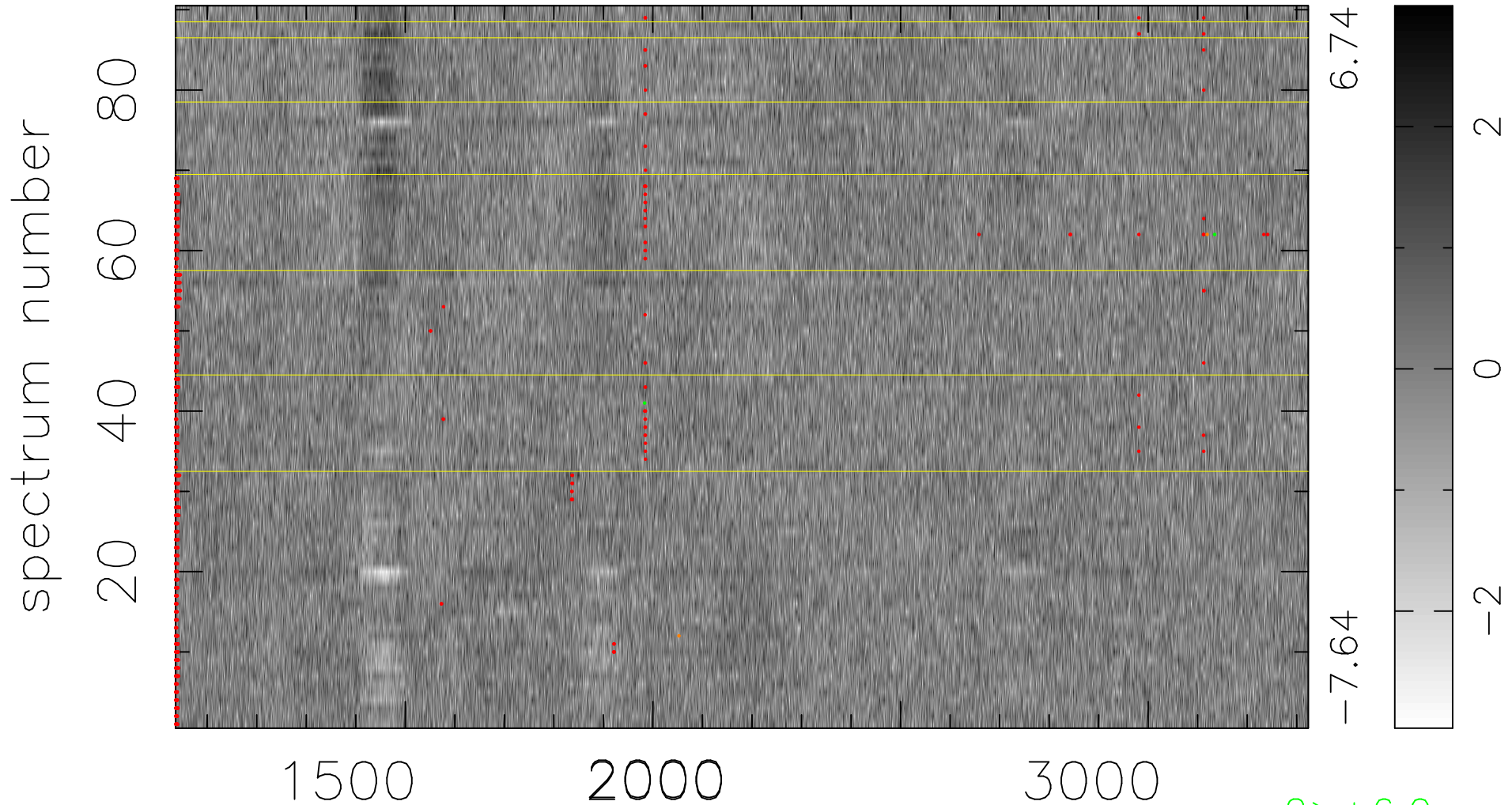


$$\chi(\lambda, t) = ( \text{Data} - \text{Model AC}_5\text{F} ) / \sigma \chi$$

$$\chi^2 / (411750 - 5140) = 0.973 \Rightarrow 1.007$$

4575x90



bad:776=0.19%

$\lambda$  (Å)  $z = 1.81613$

2 > +6.0σ

2 < -6.0σ