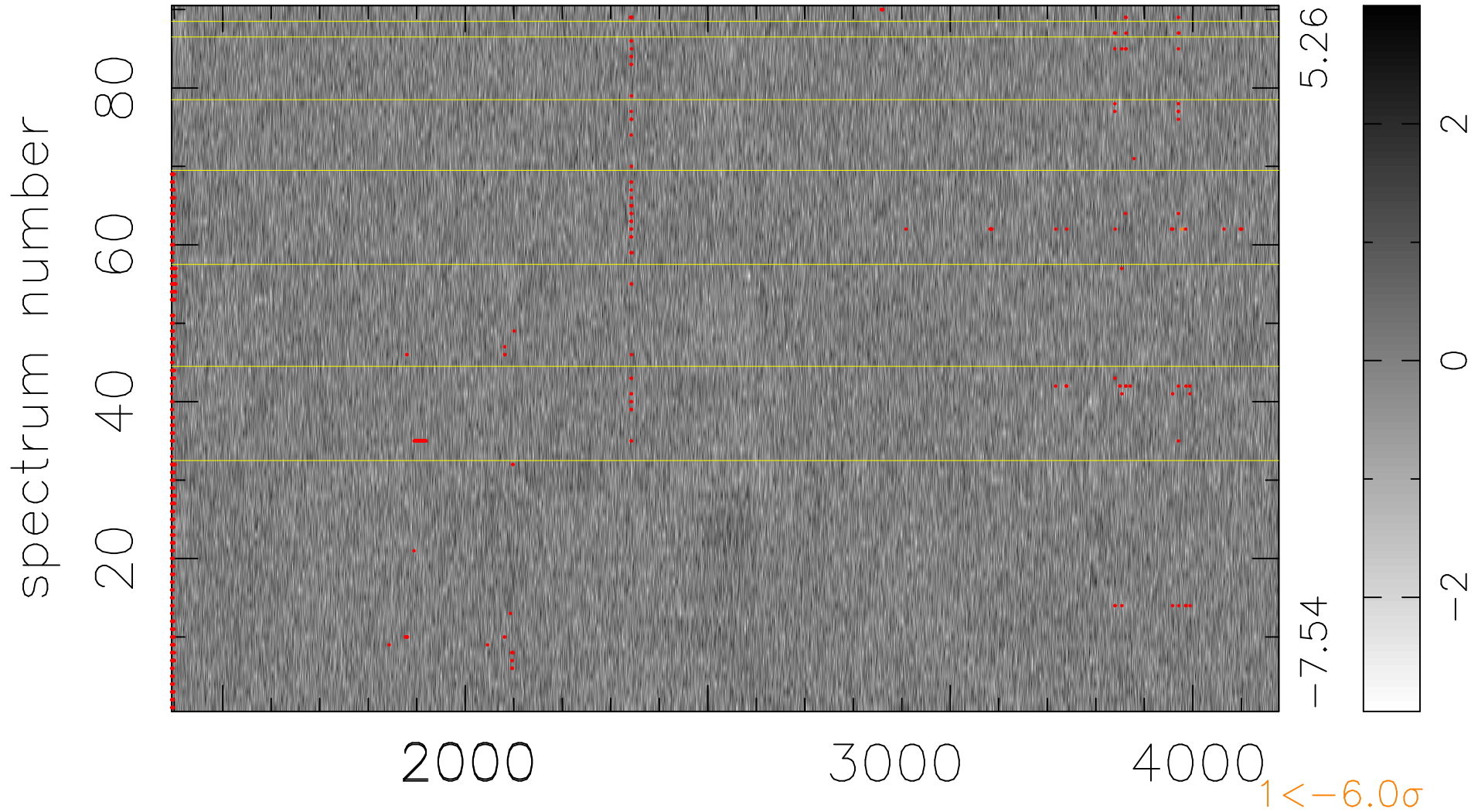


$$\chi(\lambda, t) = (\text{Data} - \text{Model } \text{AC}_5\text{B}_4\text{F}) / \sigma \chi$$

$$\chi^2 / (410940 - 5160) = 0.938 \Rightarrow 1.007$$

4566x90



bad:817=0.20% λ (Å) $z = 1.38806$