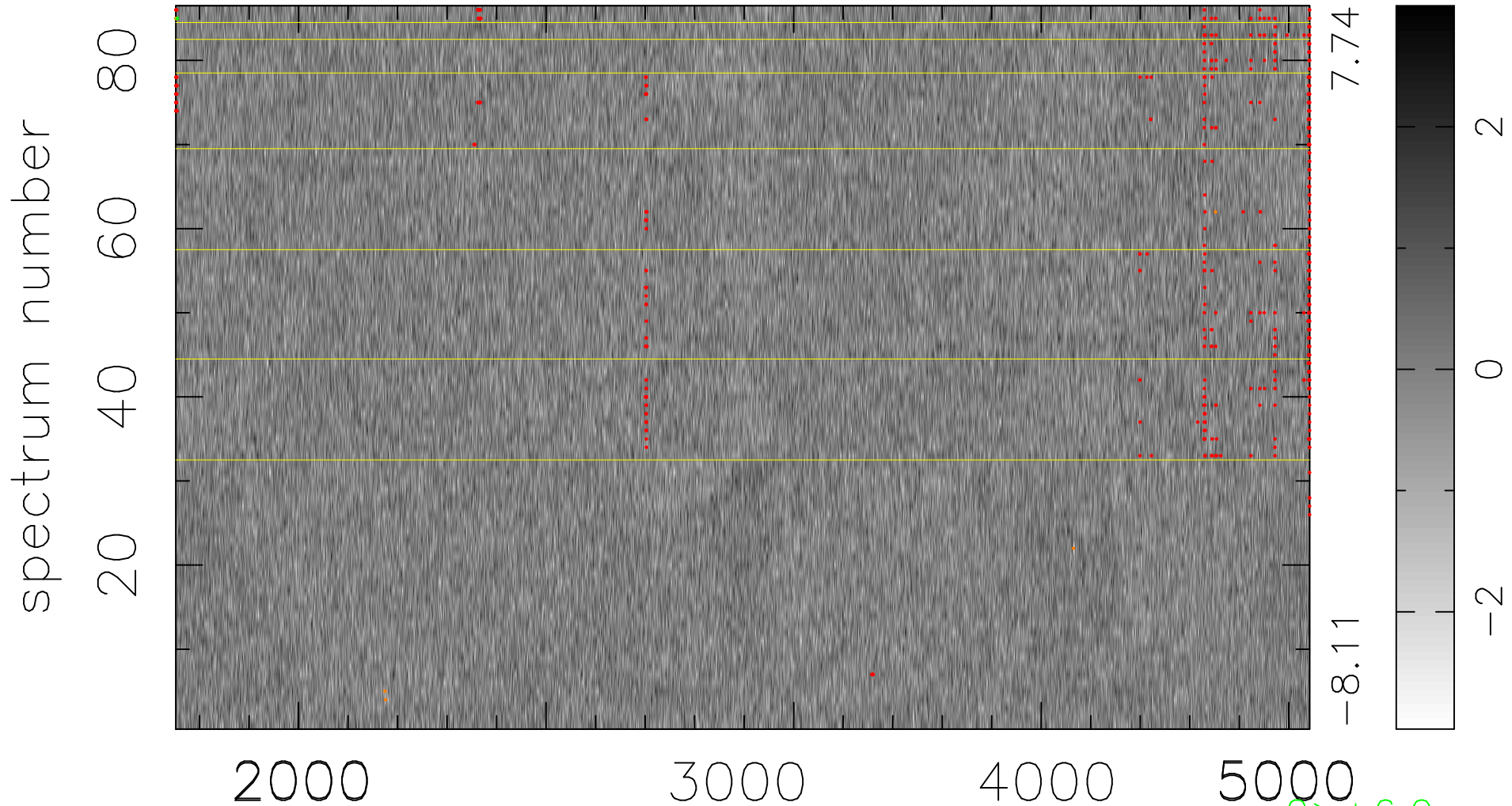


$$\chi(\lambda, t) = (\text{Data} - \text{Model AC}_5\text{F}) / \sigma \chi$$

$$\chi^2 / (393966 - 5028) = 0.965 \Rightarrow 1.008$$

4581 × 86



bad:516=0.13%

λ (Å) $z = 1.02342$

2 > +6.0σ

7 < -6.0σ