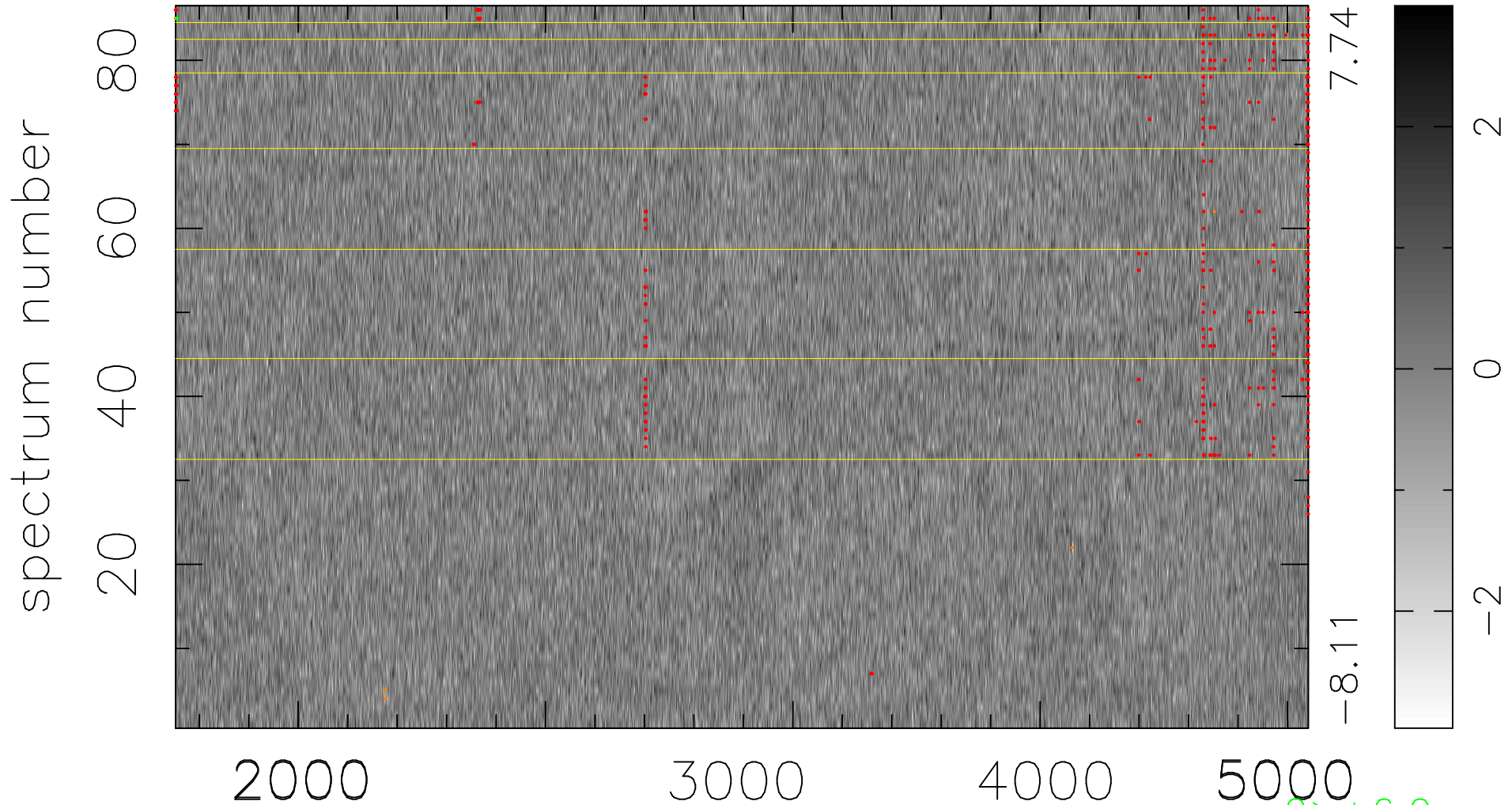


$$\chi(\lambda, t) = ( \text{Data} - \text{Model } AC_5 ) / \sigma \chi$$

$$\chi^2 / (393966 - 4942) = 0.965 \Rightarrow 1.007$$

4581 × 86



bad:516=0.13%

$\lambda$  (Å)  $z = 1.02342$

2 > +6.0 $\sigma$

7 < -6.0 $\sigma$