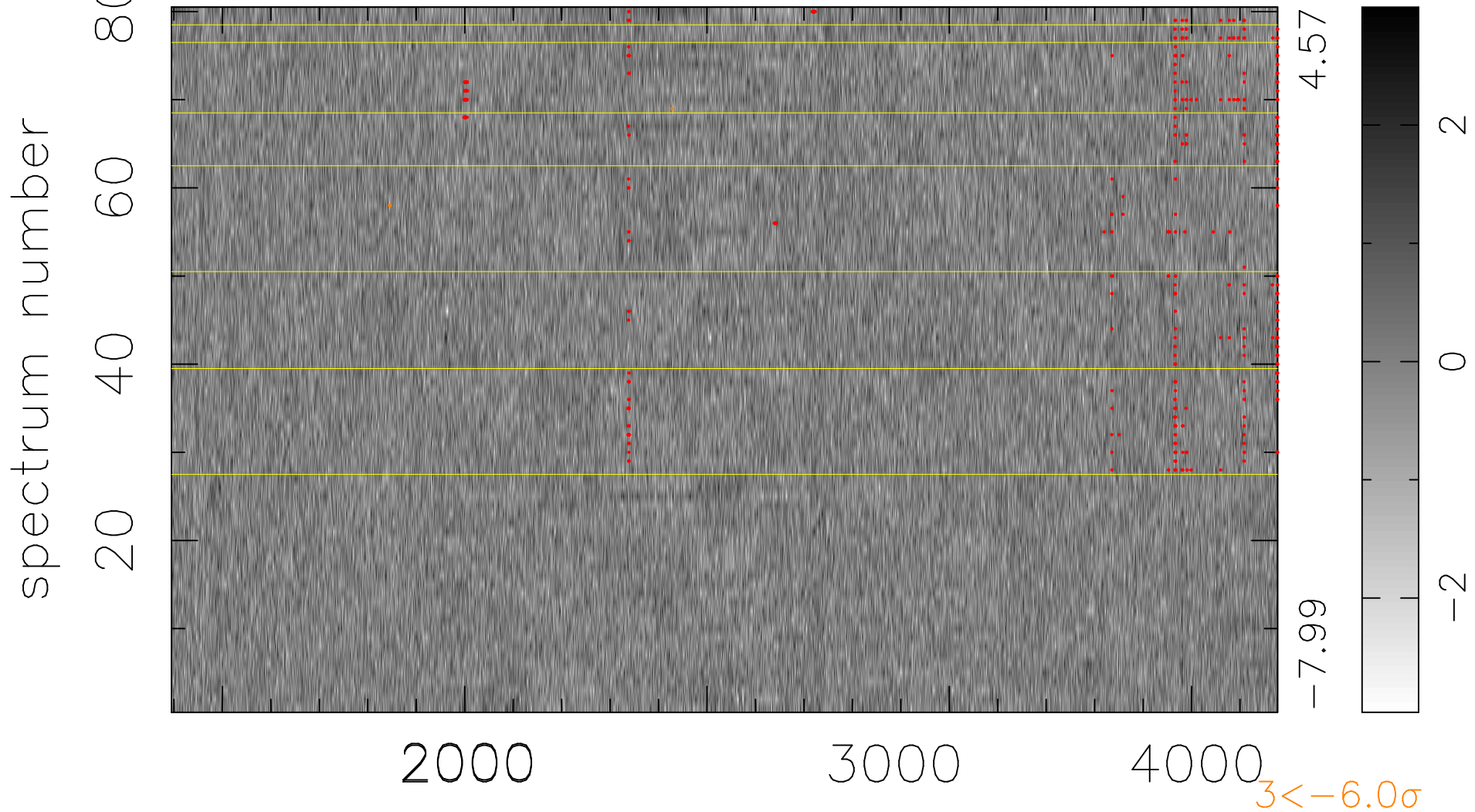


$$\chi(\lambda, t) = (\text{Data} - \text{Model } \text{AC}_5\text{B}_4\text{F}) / \sigma \chi$$

$$\chi^2 / (365280 - 5136) = 0.913 \Rightarrow 1.008$$

4566x80



bad:394=0.11% λ (Å) $z = 1.39232$