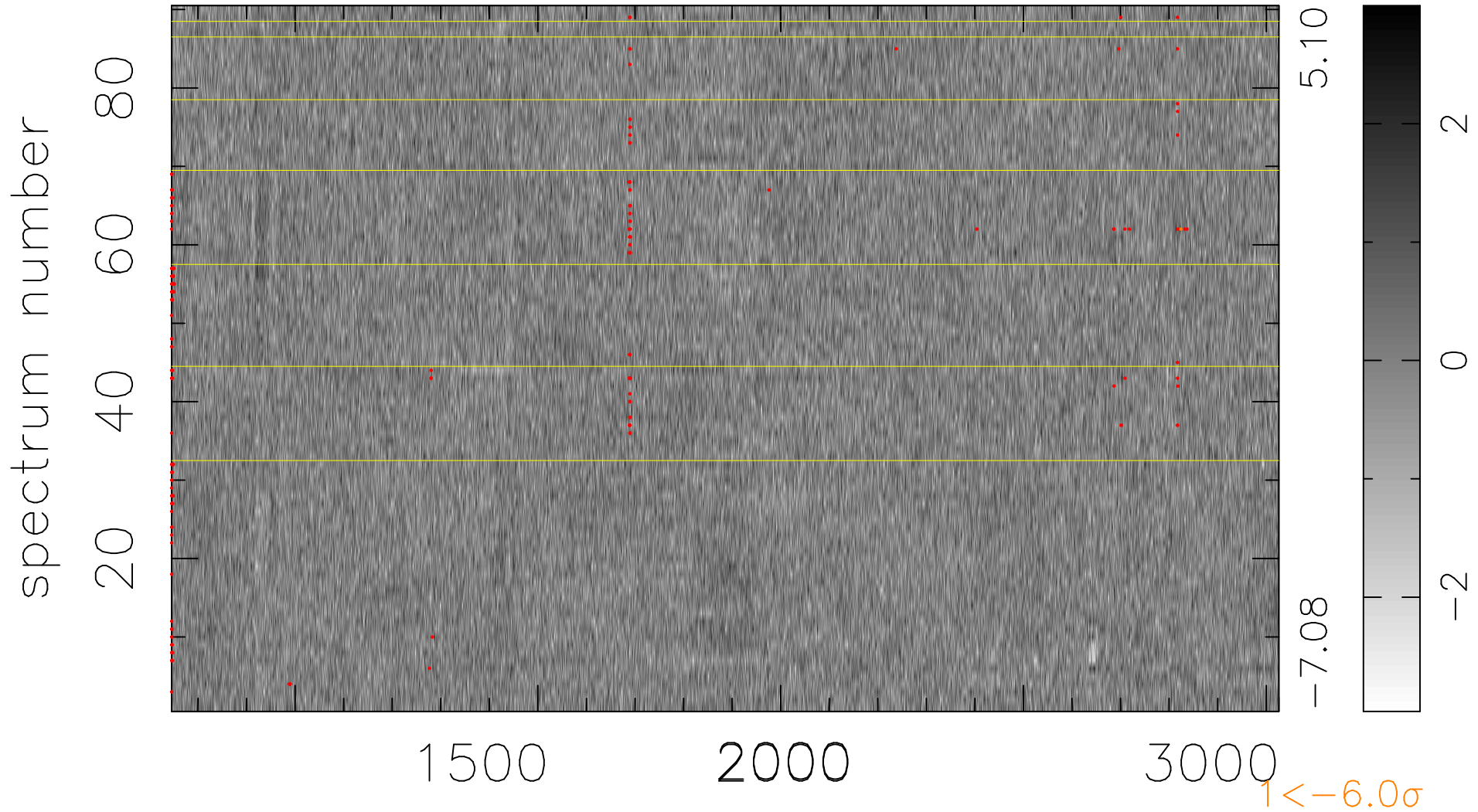


$$\chi(\lambda, t) = ( \text{Data} - \text{Model AC}_5\text{F} ) / \sigma \chi$$

$$\chi^2 / (410490 - 5332) = 0.955 \Rightarrow 1.007$$

4561 × 90



bad:213=0.052%  $\lambda$  (Å)  $z = 2.22573$