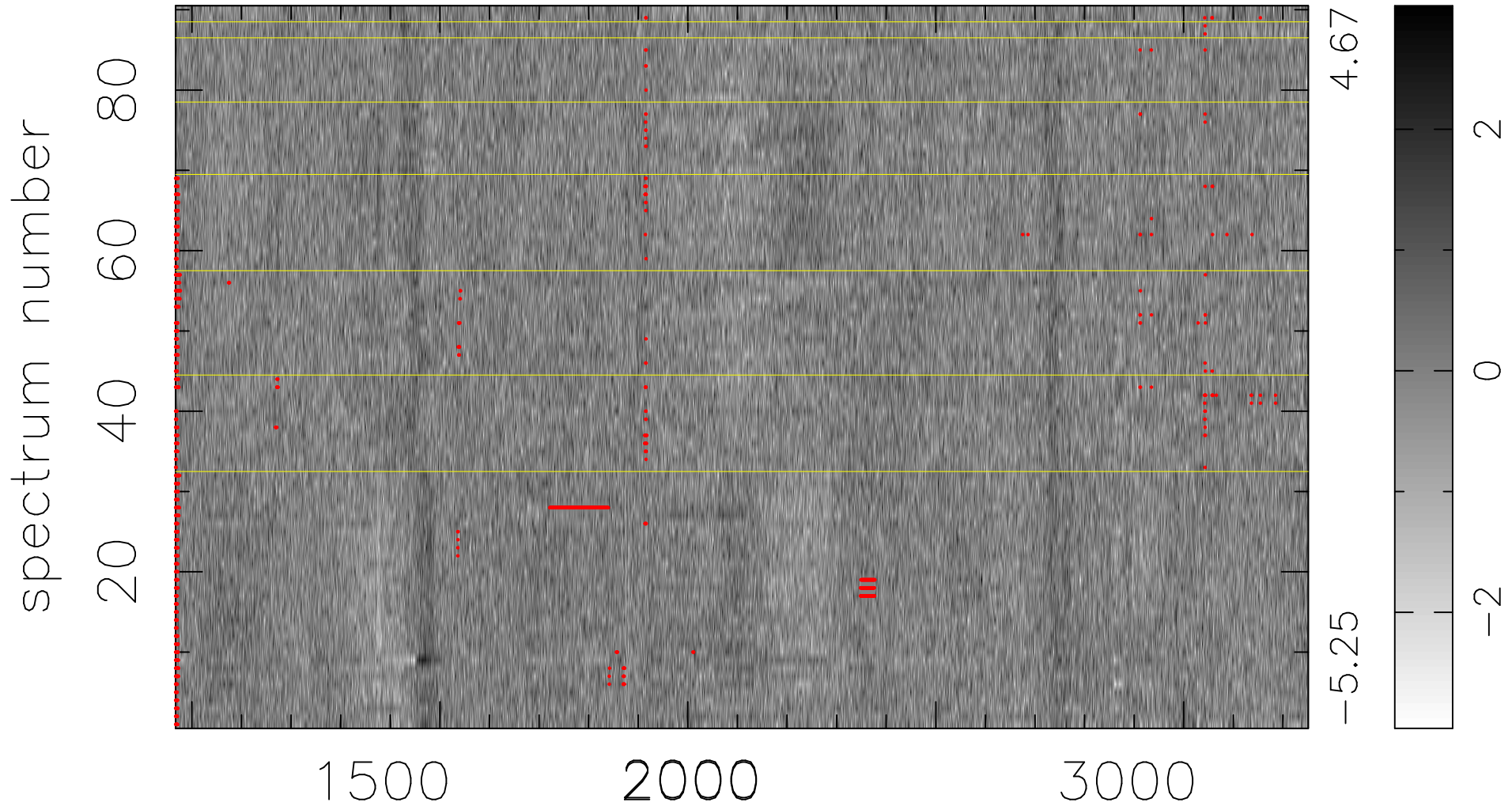


$$\chi(\lambda, t) = ( \text{Data} - \text{Model } \text{AC}_5\text{B}_6\text{F} ) / \sigma \chi$$

$$\chi^2 / (411210 - 5376) = 0.935 \Rightarrow 1.012$$

4569x90



bad:1293=0.31%  $\lambda$  (Å)  $z = 1.90714$