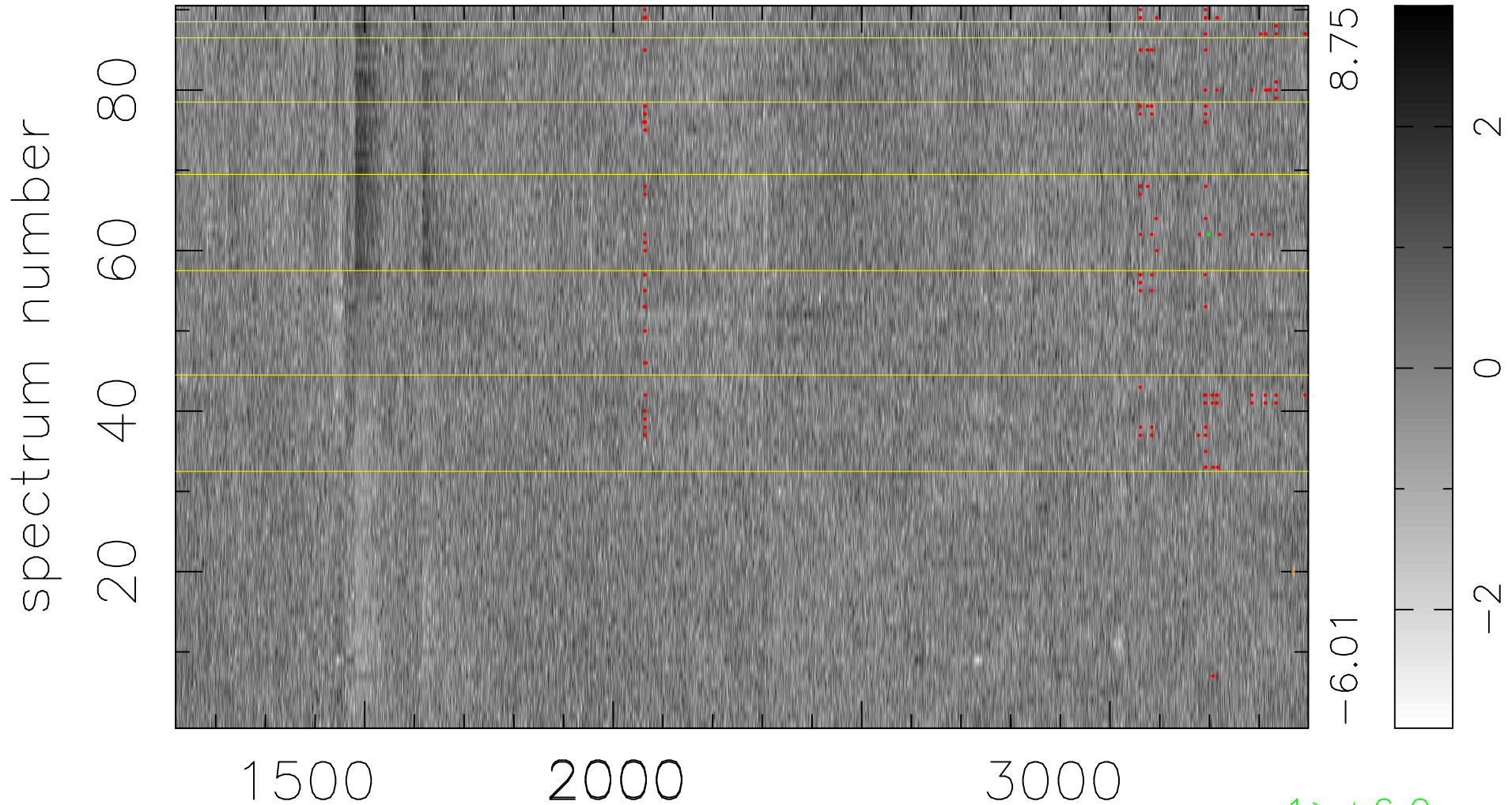


$$\chi(\lambda, t) = (\text{Data} - \text{Model } \text{AC}_5\text{B}_5\text{F}) / \sigma \chi$$

$$\chi^2 / (410400 - 5242) = 0.950 \Rightarrow 1.010$$

4560x90



bad:179=0.044% λ (Å) $z = 1.71478$

1 > +6.0σ

1 < -6.0σ