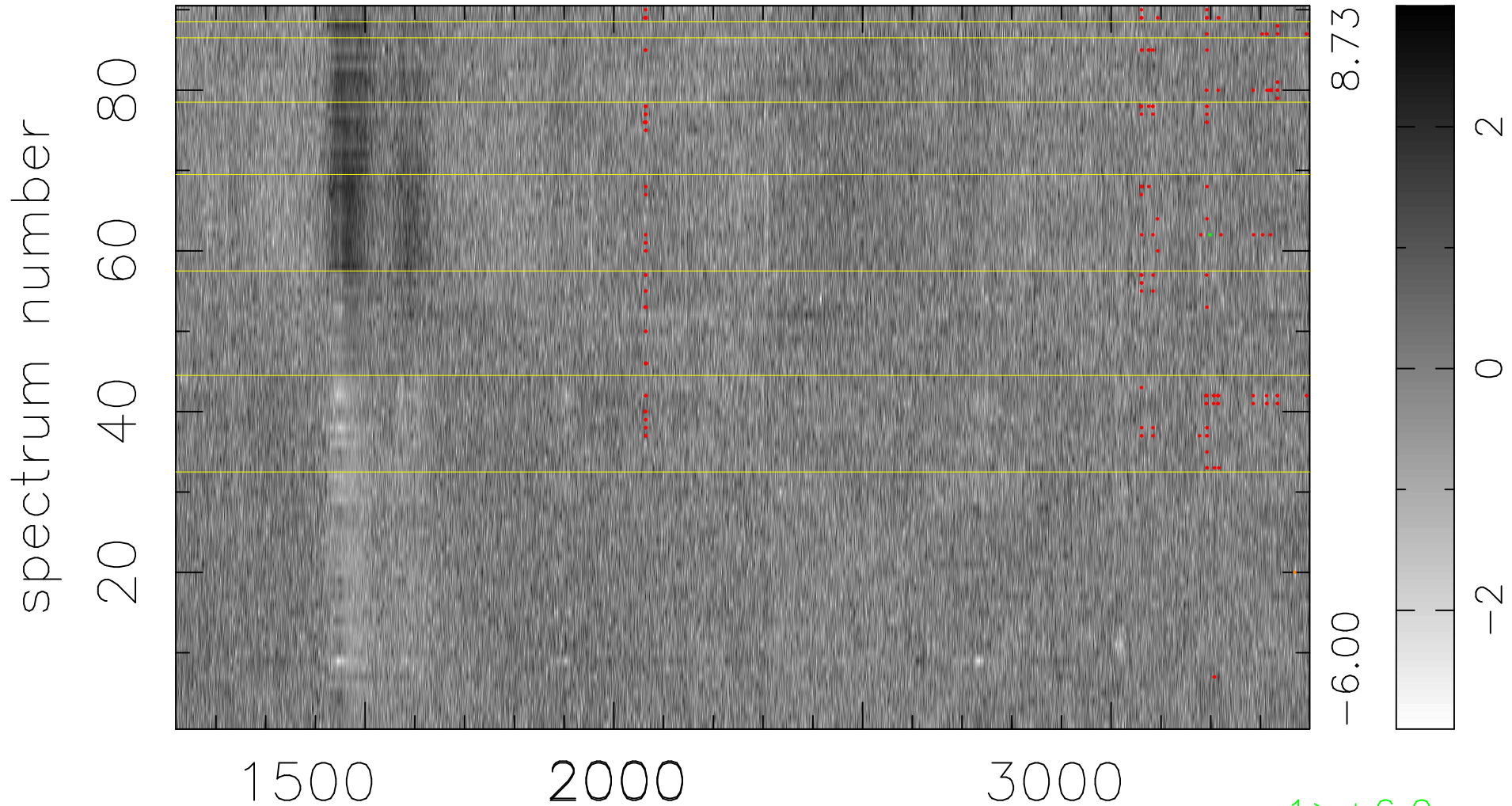


$$\chi(\lambda,t) = ( \text{Data} - \text{Model } AC_5 ) / \sigma \chi$$

$$\chi^2 / (410400 - 5041) = 1.038 \Rightarrow 1.010$$

4560x90



bad:179=0.044%  $\lambda$  (Å)  $z = 1.71478$

1 > +6.0 $\sigma$

1 < -6.0 $\sigma$