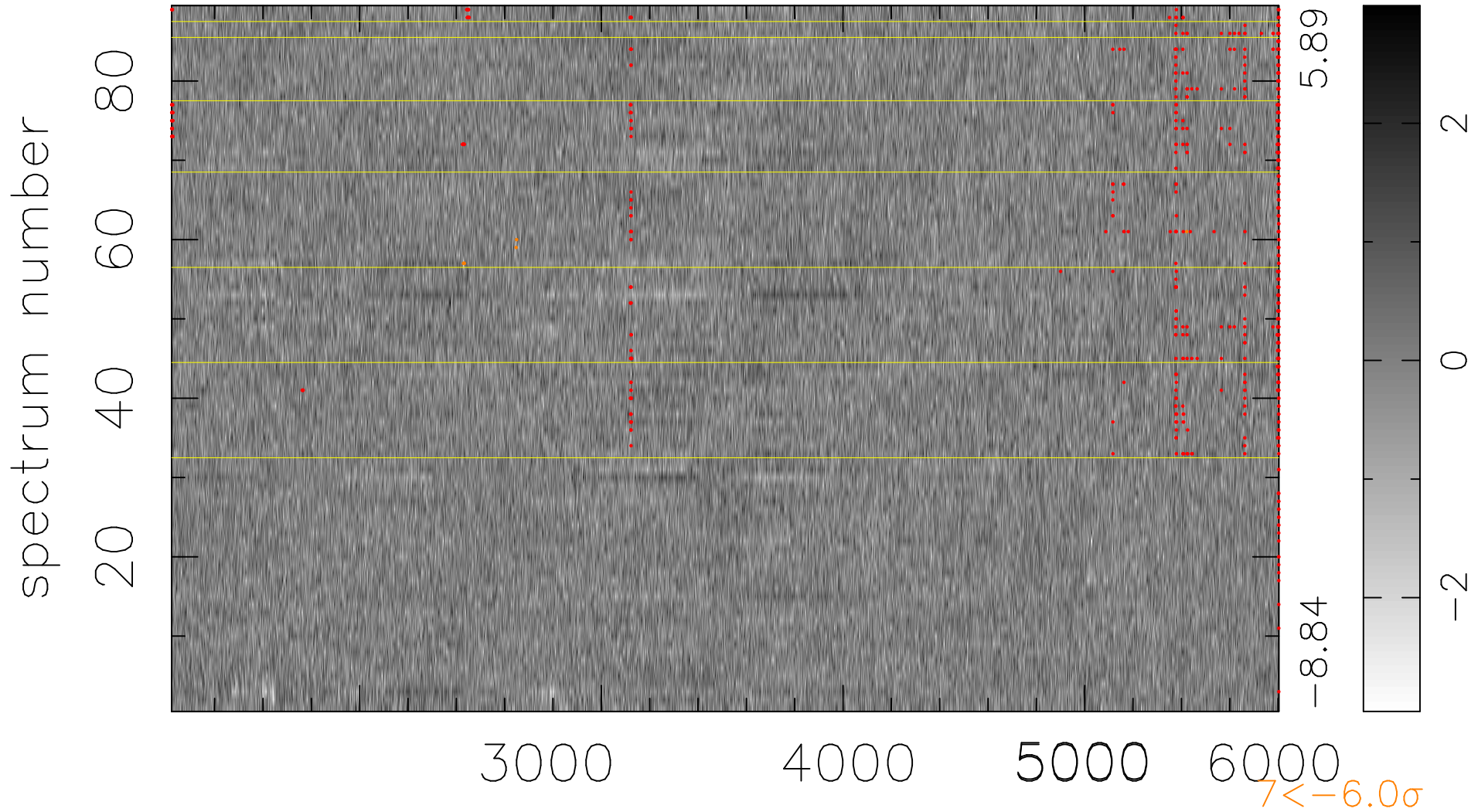


$$\chi(\lambda, t) = ( \text{Data} - \text{Model } \text{AC}_5\text{B}_3\text{F} ) / \sigma \chi$$

$$\chi^2 / (407798 - 5153) = 0.958 \Rightarrow 1.005$$

4582 × 89



bad:618=0.15%

$\lambda$  (Å)  $z = 0.71509$