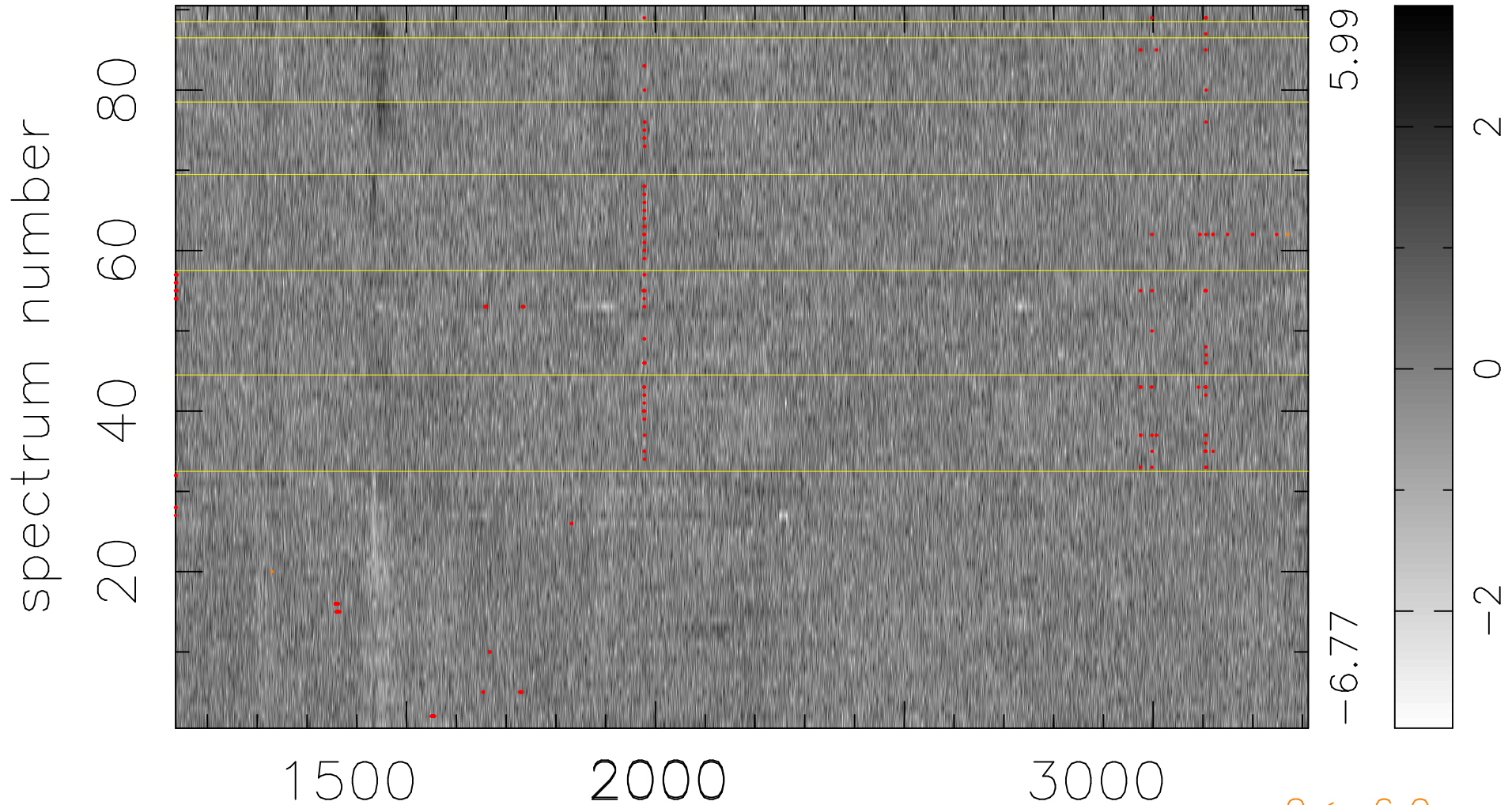


$$\chi(\lambda,t) = ( \text{Data} - \text{Model } AC_5 ) / \sigma \chi$$

$$\chi^2 / (409680 - 5032) = 0.906 \Rightarrow 1.007$$

4552x90



$2 < -6.0\sigma$

bad:227=0.055%  $\lambda$  (Å)  $z = 1.82484$