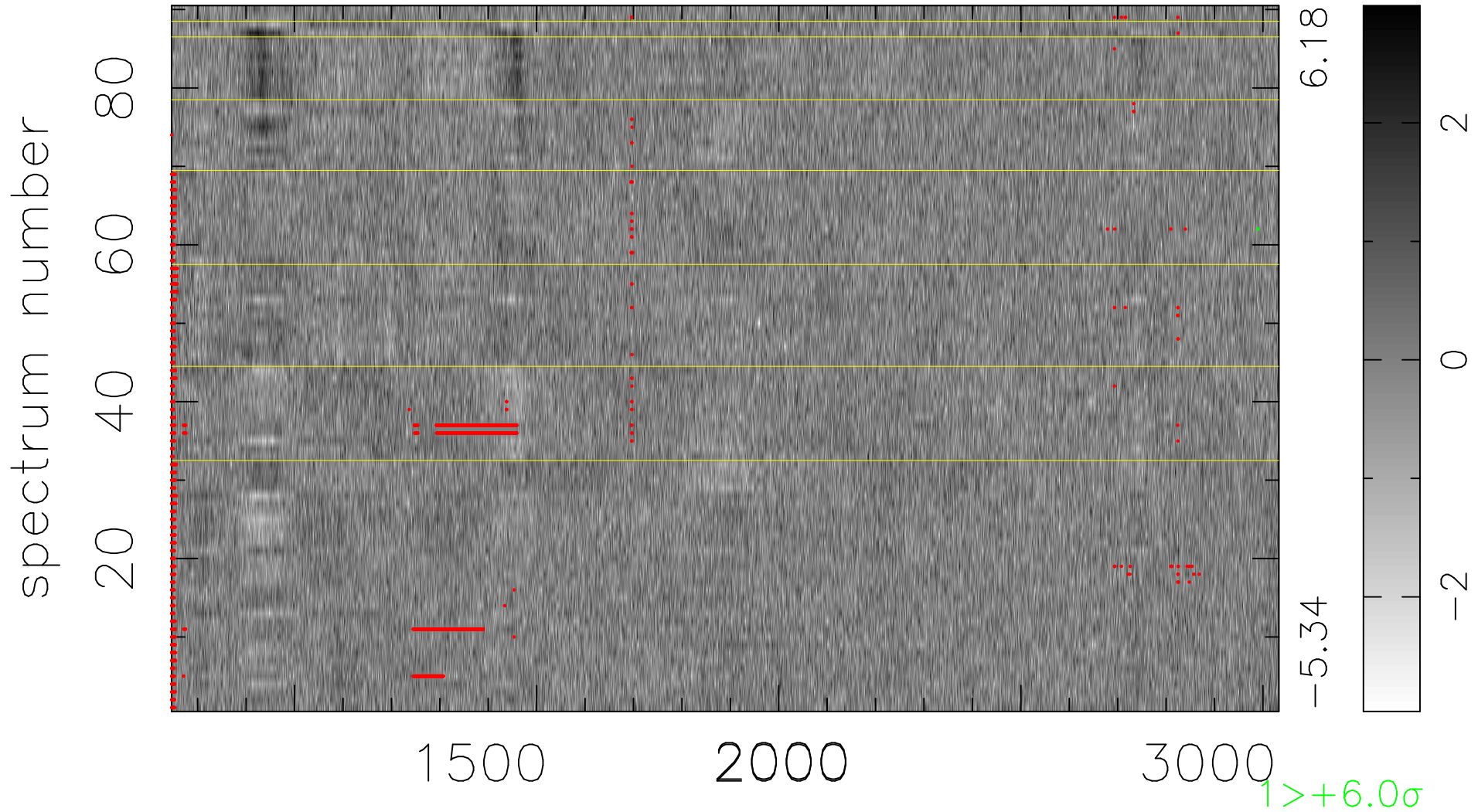


$$\chi(\lambda, t) = ( \text{Data} - \text{Model AC}_5\text{F} ) / \sigma \chi$$

$$\chi^2 / (411660 - 5337) = 0.957 \Rightarrow 1.008$$

4574 × 90



bad:2208=0.54%  $\lambda$  (Å)  $z = 2.21550$