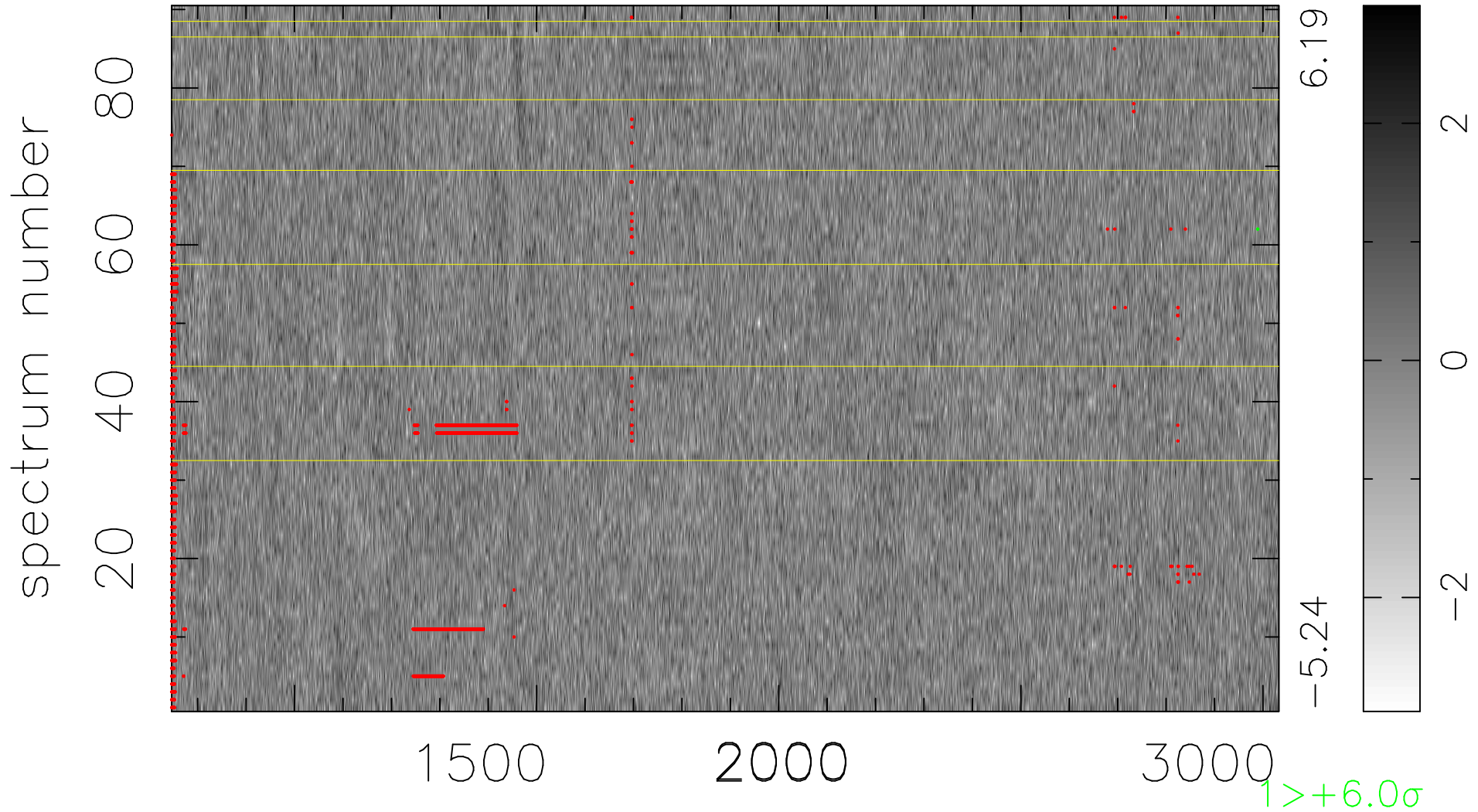


$$\chi(\lambda, t) = (\text{Data} - \text{Model } \text{AC}_5\text{B}_7\text{F}) / \sigma \chi$$

$$\chi^2 / (411660 - 5490) = 0.926 \Rightarrow 1.008$$

4574x90



bad:2208=0.54% λ (Å) $z = 2.21550$