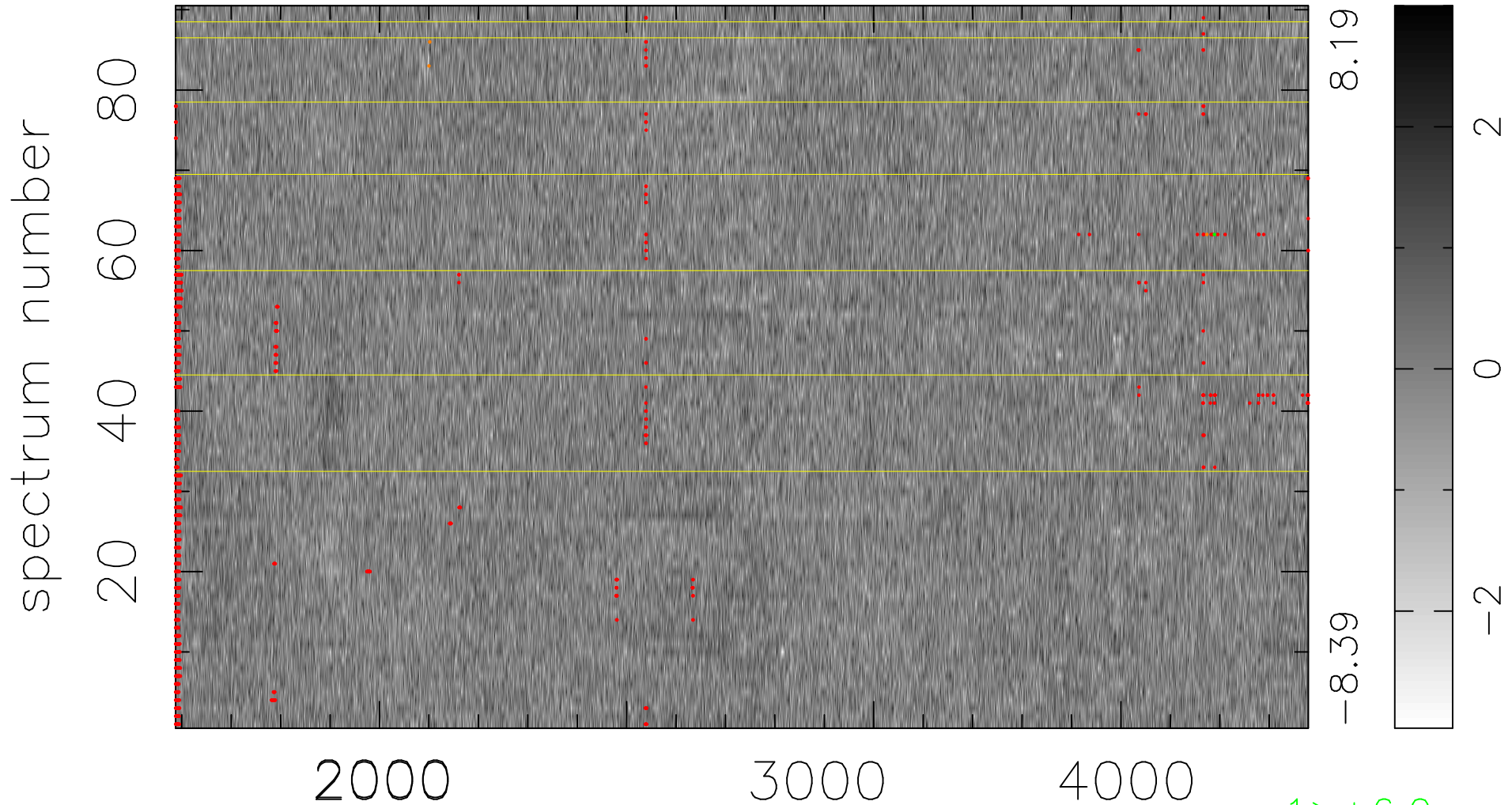


$$\chi(\lambda, t) = ( \text{Data} - \text{Model AC}_5\text{F} ) / \sigma \chi$$

$$\chi^2 / (412560 - 4962) = 0.924 \Rightarrow 1.008$$

4584 × 90



bad:1417=0.34%  $\lambda$  (Å)  $z = 1.18114$

1 > +6.0σ

3 < -6.0σ