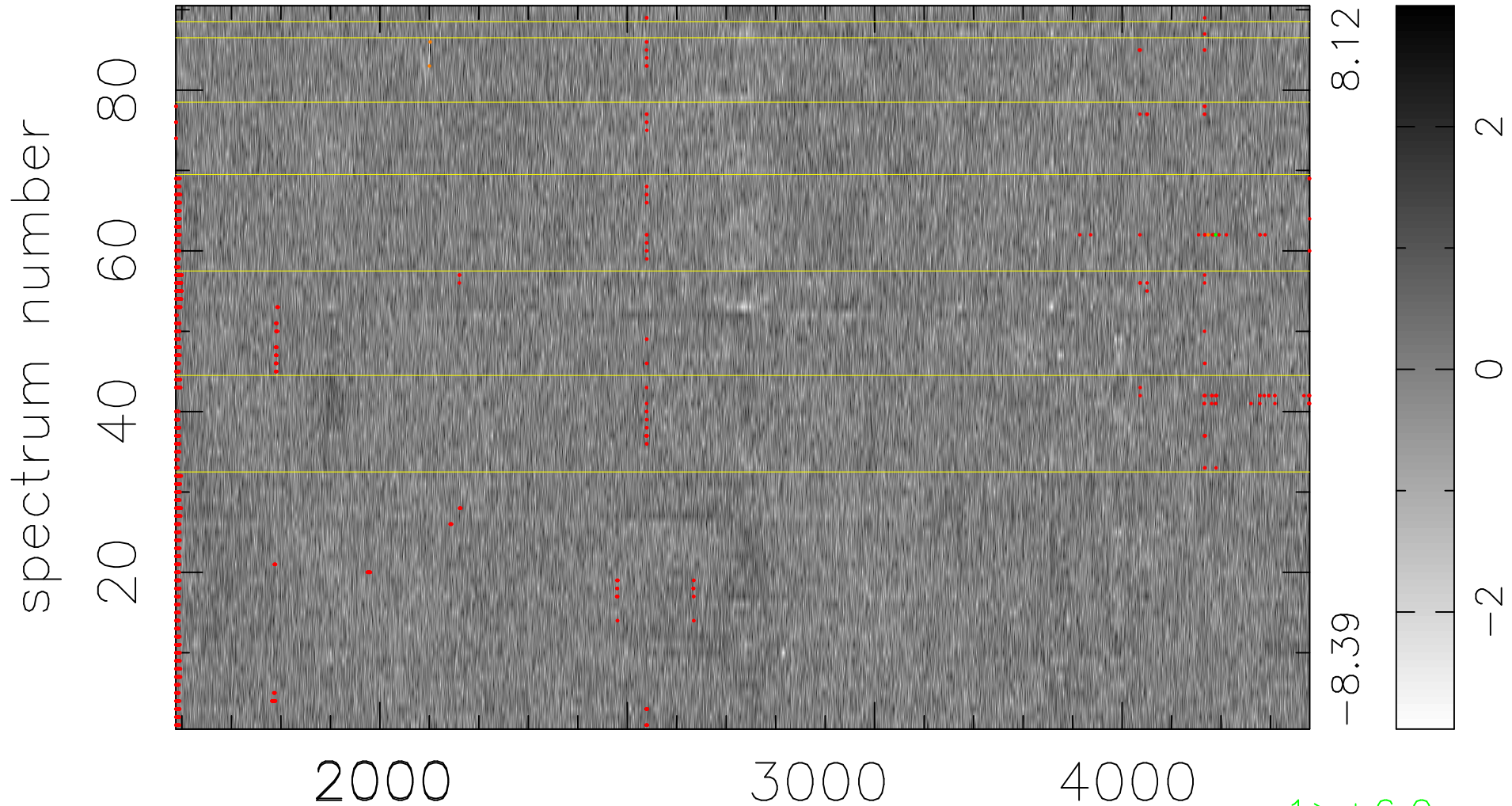


$$\chi(\lambda,t) = (\text{Data} - \text{Model } AC_5) / \sigma \chi$$

$$\chi^2 / (412560 - 4872) = 0.928 \Rightarrow 1.007$$

4584x90



bad:1417=0.34% λ (Å) $z = 1.18114$

1 > +6.0 σ
3 < -6.0 σ