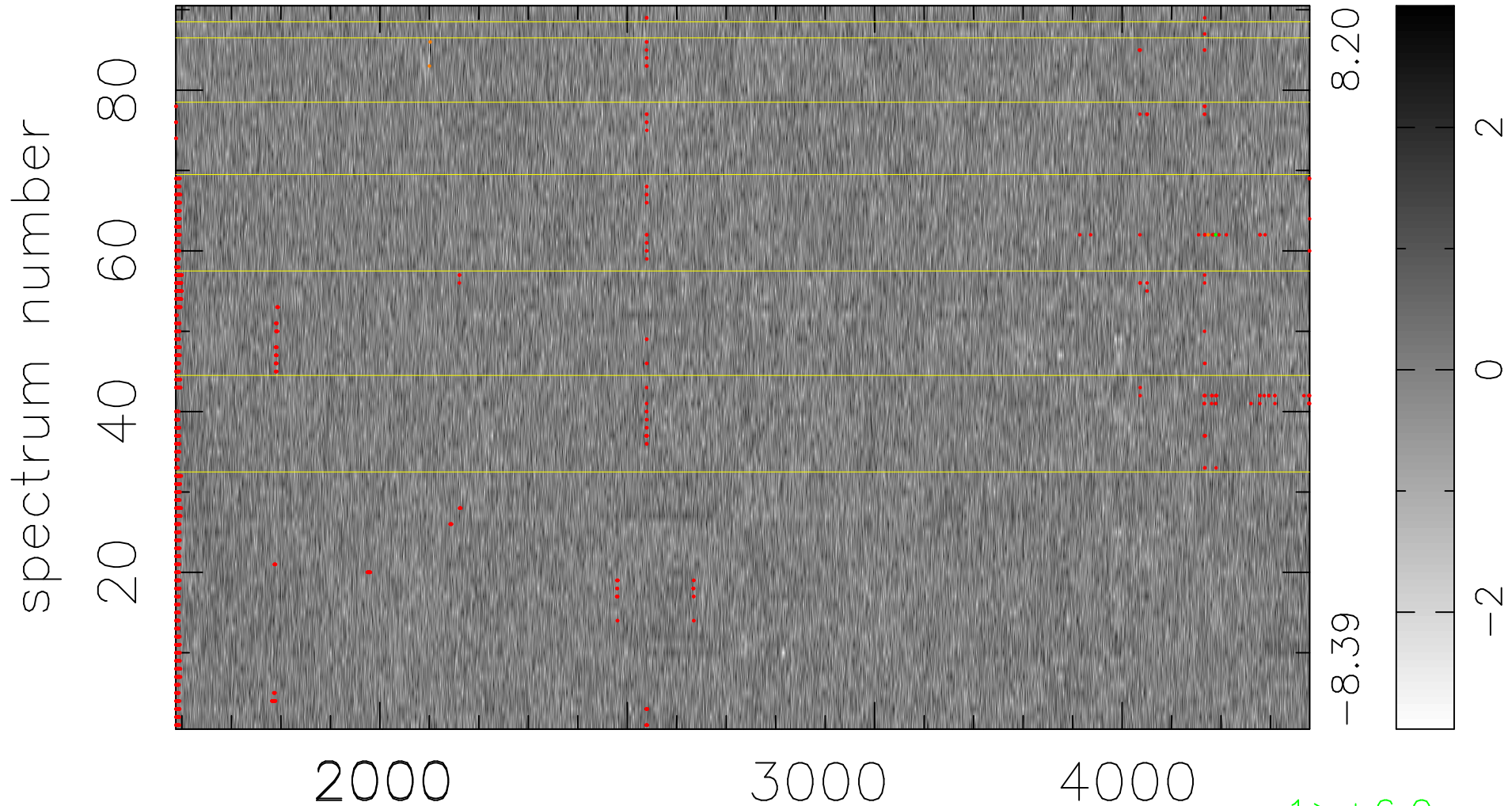


$$\chi(\lambda, t) = (\text{Data} - \text{Model } \text{AC}_5\text{B}_3\text{F}) / \sigma \chi$$

$$\chi^2 / (412560 - 5096) = 0.921 \Rightarrow 1.009$$

4584 × 90



bad:1417=0.34% λ (Å) $z = 1.18114$

1 > +6.0 σ

3 < -6.0 σ