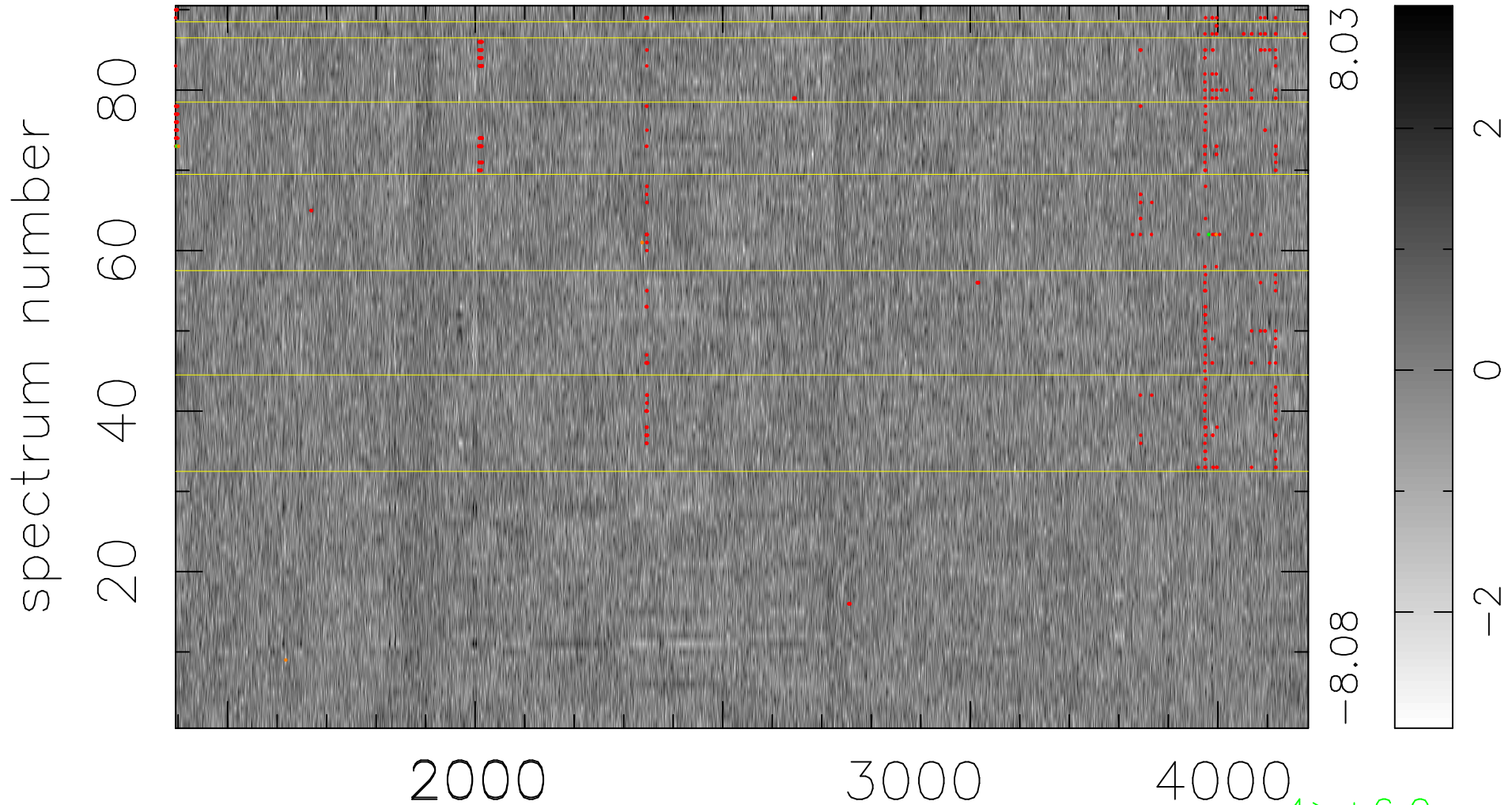


$$\chi(\lambda, t) = (\text{Data} - \text{Model } \text{AC}_5\text{B}_4\text{F}) / \sigma \chi$$

$$\chi^2 / (411840 - 5210) = 0.939 \Rightarrow 1.009$$

4576x90



bad:440=0.11%

λ (Å) $z = 1.38330$

4 > +6.0σ

7 < -6.0σ