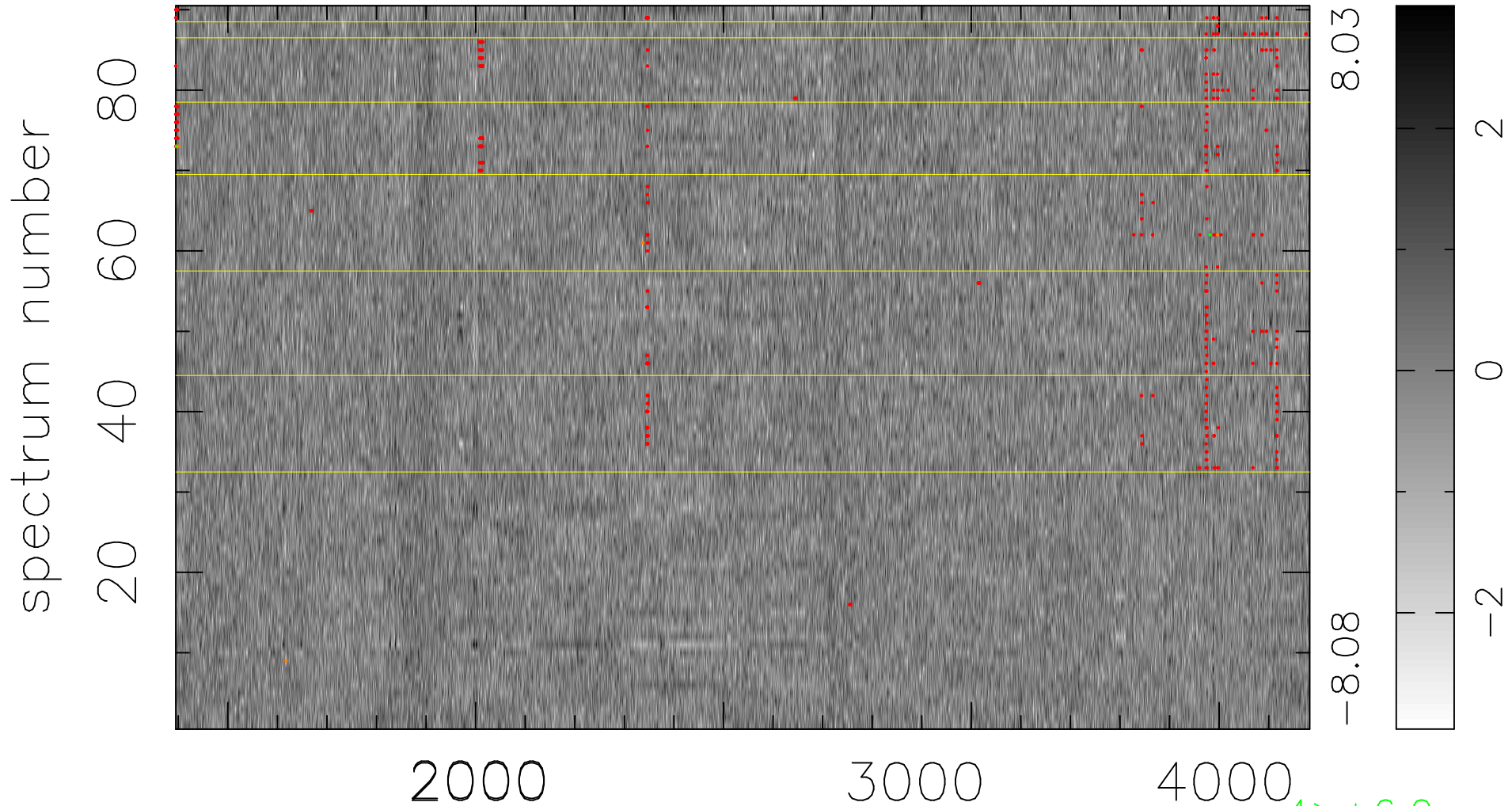


$$\chi(\lambda, t) = ( \text{Data} - \text{Model } \text{AC}_5\text{B}_4\text{F} ) / \sigma \chi$$

$$\chi^2 / (411840 - 5210) = 0.939 \Rightarrow 1.009$$

4576 × 90



4 > +6.0σ

7 < -6.0σ

bad:440=0.11%

λ (Å) z = 1.38330